



Onsight Realwear User Guide

Copyright

Onsight RealWear User Guide

Doc #: 400349-08 Rev: F

November 2022 (v11.4.16)

Information in this document is subject to change without notice. Reproduction in any manner whatsoever without the written permission of Librestream is strictly forbidden.

Copyright Notice:

Copyright 2004-2022 Librestream Technologies Incorporated. All Rights Reserved.

Patents Notice:

United States Patent # 7,221,386, together with additional patents pending in Canada, the United States, and other countries, all of which are in the name of Librestream Technologies Inc.

Trademark Notice

Librestream, the Librestream logo, Onsight, the Onsight logo, Onsight Connect, Onsight Flow, Onsight Workspace, Onsight Cube, Onsight Collaboration Hub, Onsight Smartcam, Onsight Platform Manager, and Onsight Teamlink are either registered trademarks or trademarks of Librestream Technologies Incorporated in Canada, the United States, European Union and/or other countries. All other trademarks are the property of their respective owners.

Contents

Copyright.....	ii
1. INTRODUCTION.....	5
2. IDENTIFY YOUR DEVICE.....	7
2.1. HMT-1 Components.....	7
2.2. HMT-1Z1 Components.....	8
2.3. Navigator 500 Components.....	8
3. HOW TO WEAR.....	9
3.1. Determine Your Dominant Eye.....	9
3.2. Wear Your HMT.....	9
3.3. Adjustments.....	10
3.4. Power ON Your HMT.....	10
4. SETUP AND CONFIGURATION.....	11
4.1. Download the ADB Driver.....	11
4.1.1. Installing the ADB Driver.....	11
4.2. Cable Connect the HMT to Your PC.....	11
4.3. Realwear HMT First Time Configuration.....	12
4.3.1. Configuring Realwear.....	12
4.4. Install Onsite Connect for Realwear.....	15
4.4.1. Installing Onsite-Connect for Realwear.....	15
4.5. Configure Realwear Settings.....	16
4.5.1. Enabling Image Stabilization.....	17
4.5.2. Setting the Field of View.....	18
4.5.3. Performing a Wireless Update.....	19
4.5.4. Enable File Sharing with your PC (Navigator 500 Option).....	20
5. ACCESS GLOBAL DEVICE COMMANDS.....	23
5.1. Speech Recognition (Say What You See).....	23
6. LAUNCH ONSIGHT CONNECT.....	25
6.1. Login to Onsite Connect.....	25
6.2. Realwear Explorer Login Using PC Keyboard & Mouse.....	26
6.3. HMT Speech/Voice Keyboard.....	26
6.3.1. Using the HMT Speech Keyboard to Login.....	27
6.4. QR Code Login.....	28
6.4.1. Generating a QR Code.....	29
6.5. Contacts.....	30
6.6. System Health.....	30
6.7. Onsite Voice Commands.....	30
6.7.1. Onsite Flow Voice Commands.....	32
6.8. Navigator 500 Features.....	33
6.9. Multiparty Calls.....	33
6.10. Onsite Translator.....	34
7. ONSIGHT CUBE.....	35
7.1. Bluetooth Pairing With an Onsite Cube.....	35
7.2. Cube File Management.....	35
7.3. Image Capture & Recording While Paired to a Cube.....	35

Appendices..... 37
FAQs..... 37
Realwear Specifications..... 39
Glossary..... 41
 American National Standards Institute..... 41
 ANSI Z87.1..... 41
 Atmospheres Explosible 41
 Bel..... 41
 Bluetooth..... 41
 Decibel..... 42
 A-weighted Decibels 42
 Ingress Protection Rating..... 42
 Light Emitting Diode..... 42
 MIL-STD 810G..... 42
 Wi-Fi..... 42
Index..... a

1. INTRODUCTION

This document outlines the operational voice commands currently available in **Onsight Connect** for Realwear version 9 including **Onsight Cube** support for the Head Mounted Tablet (HMT). Release HMT FW v9.0.5c or higher required.

To access the Onsight software on your HMT from the **Home** screen say, **MY PROGRAMS**. On the programs listing, you should see the **Onsight** icon. You can then say either **Select Item #** using the number assigned to that icon or simply say, **Onsight**.



Figure 1-1 Voice Commands - Show Tool Tips

If this is the first time running Onsight on the HMT, you will need to login and enable the **Remember Me** option to establish your auto-login credentials. Onsight will also request permission to access the **HMT's location, Camera, Microphone (Mic)**, etc. **Enable** each option and select the **Do not ask again** check box option.

i **Tip:** What is the most important Onsight voice command?

Show Tool Tips command displays all available **Onsight Connect** commands for the current screen. The tool tips will remain onscreen until you issue the **Hide Tool Tips** command.

2. IDENTIFY YOUR DEVICE


The following Head Mounted Tablets (HMT) devices are available:

- HMT-1
- HMT-1Z1
- Navigator 500

2.1. HMT-1 Components

Identify the following components:

1. **Power** button
2. **Action** button
3. Elbow Joint
4. Boom Arm
5. Lock Ring
6. Display Pod
7. Mic A1

 **Tip:** Mic A2 (On opposite side)

8. Flashlight
9. Camera
10. Mic B1
11. Mic B2
12. Shoulder Joint
13. Removable Head Strap
14. Removable Head Pad
15. Speaker

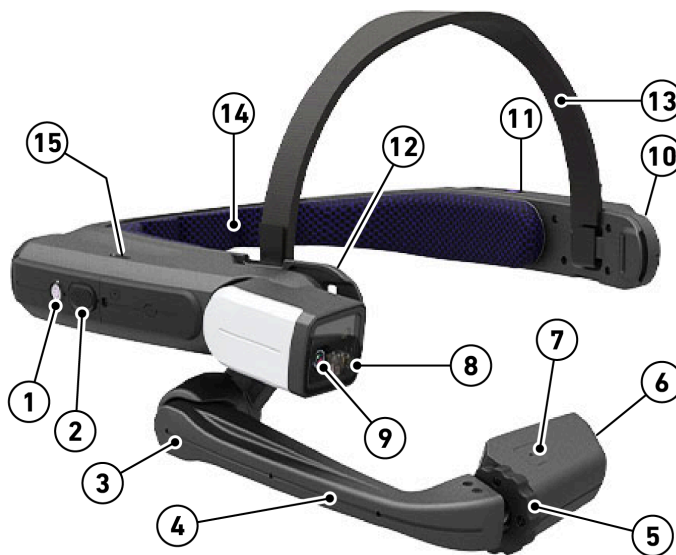


Figure 2-1 HMT-1 Components

2.2. HMT-1Z1 Components

Identify the following components:

1. **Power** button
2. **Action** button
3. Elbow Joint
4. Boom Arm
5. Lock Ring
6. Display Pod
7. Mic A1
8. Mic A2 (On opposite side)
9. Flashlight
10. Camera
11. Mic B1
12. Shoulder Joint
13. Removable Head Pad
14. Speaker

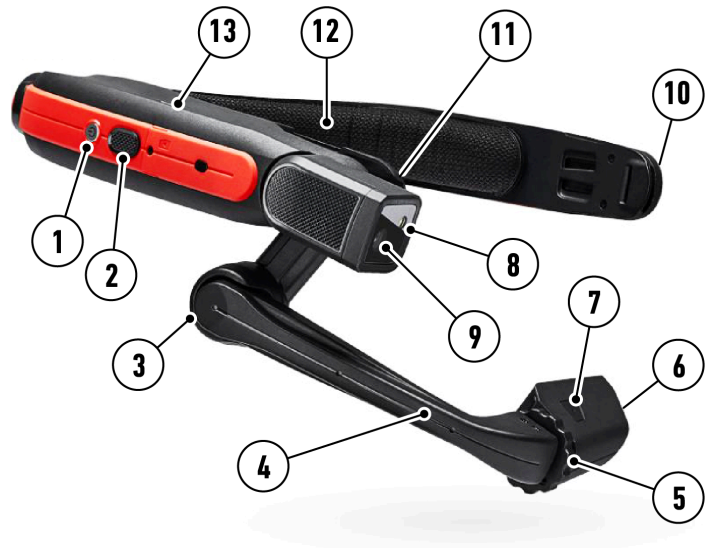


Figure 2-2 HMT-1Z1 Components

2.3. Navigator 500 Components

Identify the following components:

1. **Power** button (Incl. Fingerprint Scanner)
2. Mic B1
3. B2 (On opposite side)
4. Micro SD Card Slot
5. Speaker
6. Navigation (Left/Right)
7. **Action** button
8. Elbow Joint
9. Boom Arm
10. Display Pod
11. Mic A1
12. Mic A2 (On opposite side)
13. Flashlight
14. Camera

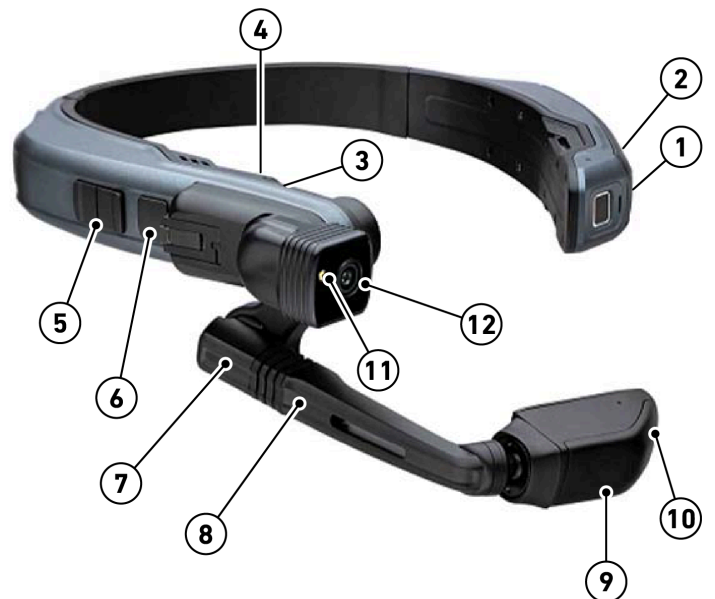


Figure 2-3 Navigator 500 Components

3. HOW TO WEAR

3.1. Determine Your Dominant Eye

First, you must determine whether your right or left eye is dominant. This determination is important because you will need to position the display pod in front of your dominant eye. If you do not know which is your dominant eye, perform the simple test below.

Create a triangle using your thumbs and forefingers as shown. With both eyes open, look through the triangle and center something such as a doorknob in the triangle. Close your left eye. If the object remains in view, you are right eye dominant. If closing your right eye keeps the object in view, you are left eye dominant.


 **Note:** The eye test is not to be construed as all-encompassing. If you have always used your right-eye as the dominant eye and the test indicates you are left-eye dominant, test using the display pod on both eyes. Determine which eye you are able to best utilize for the HMT and ensure that the display pod is in front of your dominant eye.



Figure 3-1 Determining Your Dominant Eye

3.2. Wear Your HMT



Figure 3-2 Positioning the HMT

Position the HMT where the Main Unit is positioned on the side of the head forming a Z-shape. Ensure the shorter arm is pushed all the way back towards the ear.

3.3. Adjustments

Display Pod

After properly positioning the HMT, adjust the **Display Pod** about 1-2 inches from your eye. Position it just below your line of sight to get a clear display. Adjust the Display Pod either forward or backward to properly view the entire display screen. When properly set, the screen will be bright and crisp in which you can even read the smallest text.


 **Note:** If you wear eye-glasses or your work environment requires protective eye wear, continue to wear them while using the HMT. The HMT is designed to work well with or without eye glasses or protective eye wear.



Figure 3-3 Adjusting the Display Pod

Adjust the ends of the head strap (1) by collapsing the hinged main unit inwards, and if needed, adjust the back-padding strap (2) to fit the HMT tightly.


Consider using the Tri-band Strap as a head strap replacement for the HMT-1 standard Overhead Strap (1) for a more secure fit as needed.



Figure 3-4 Head Strap Adjustments

3.4. Power ON Your HMT

Power ON the HMT by holding down the **Power** button for five seconds.

 **Note:** The location of the Power button may vary depending on your device. Refer to the components for your device required. After pressing the Power Button for five seconds, the button will light up green and you should hear the startup sound. You are now ready to launch **Onsight Connect**.

Related information

[HMT-1 Components \(on page 7\)](#)

[HMT-1Z1 Components \(on page 8\)](#)

[Navigator 500 Components \(on page 8\)](#)

4. SETUP AND CONFIGURATION

4.1. Download the ADB Driver

Download and run the installation file to install the Android Debug Bridge (ADB) driver from the following link:

- <http://dl.adbdriver.com/upload/adbdriver.zip>

The ADB driver enables your computer device to communicate with the HMT using **Realwear Explorer**. It gives your Windows PC the necessary tools to link with your HMT device.

i Tip: If your computer already has this driver, the driver will not reinstall. It will provide a message the driver is already installed.

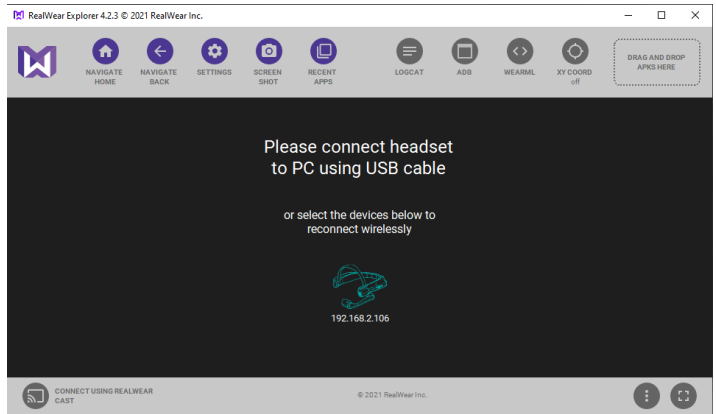


Figure 4-1 Realwear Application

4.1.1. Installing the ADB Driver

1. Download the [ADB driver](#) to your Personal Computer (PC).
2. **Unzip** and double-click the file to run the Installer. Accept all prompts.
3. Connect the HMT to your PC using the USB cable.
4. Within Realwear, click **Refresh** so the Installer can locate the connected HMT device.
5. Select or highlight the HMT device, then click **Install**.
6. Realwear Explorer should be connected and mirroring the screen of the HMT Display Pod.

4.2. Cable Connect the HMT to Your PC

Connect the HMT to your PC by:

1. Powering On the HMT — Hold the **Power** button down for three to five seconds.
2. Attach the USB cable to your PC to charge and/or connect your device with Realwear Explorer.
3. Attach the other end to the **HMT Micro-USB** port using the Micro-USB Converter Connector.

i Note: If you are using a newer headset like the Navigator 500, then use the USB-C port and cable provided. Verify that the connector is oriented and inserted properly on the HMT to prevent damage.



Figure 4-2 Micro USB Port with Rubber Lid



Figure 4-3 Micro USB Port with Rubber Lid

4.3. Realwear HMT First Time Configuration

For first-time configuration of your Realwear HMT device, launch a web browser and navigate to: realwear.setupmyhmt.com/configure. Click the **Configuration** button and follow the instructions to complete:

1. **First Time Setup**
2. **Set Language**
3. **Set Date & Time**
4. **Wireless Network Setup**

i **Tip:** First time setup can also use the **Realwear Companion** app downloaded from **Google Play** or the **App Store** using a smartphone to setup your HMT in a manner that mirrors this procedure.

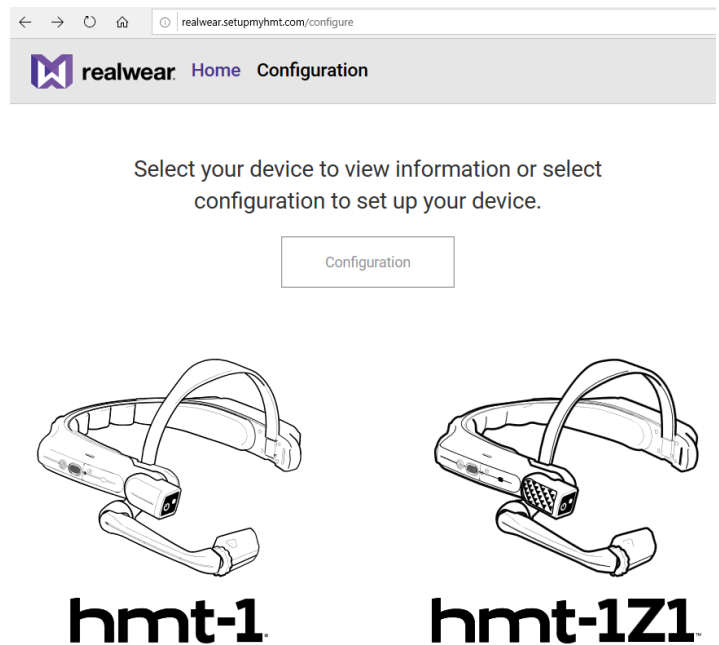


Figure 4-4 Realwear Configuration

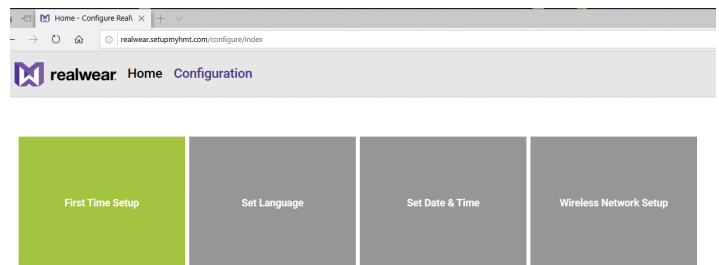


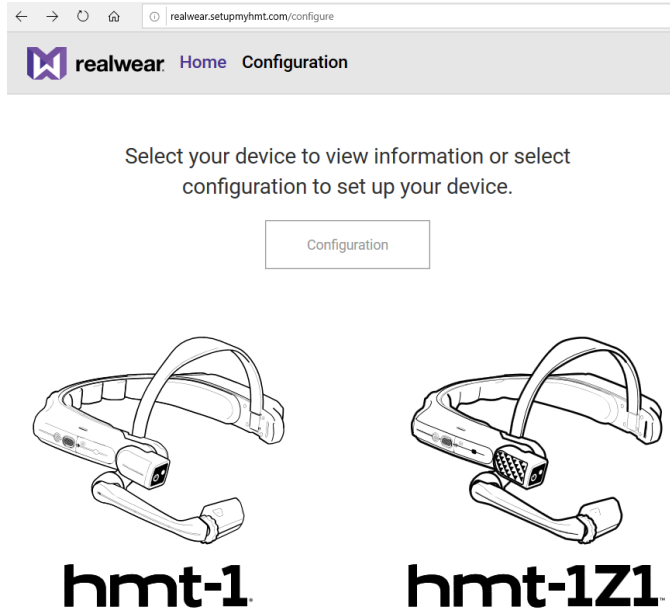
Figure 4-5 First Time Setup

4.3.1. Configuring Realwear

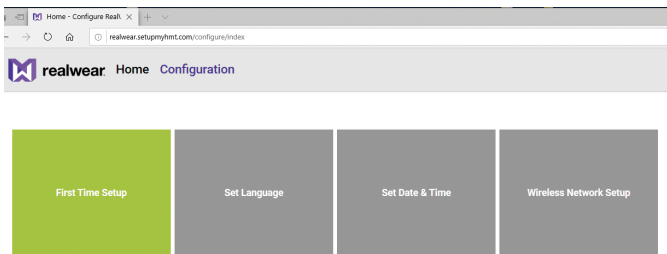
In this task, you will configure your Realwear HMT.

1. Launch a web browser and navigate to:

- <https://realwear.setupmyhmt.com/configure>

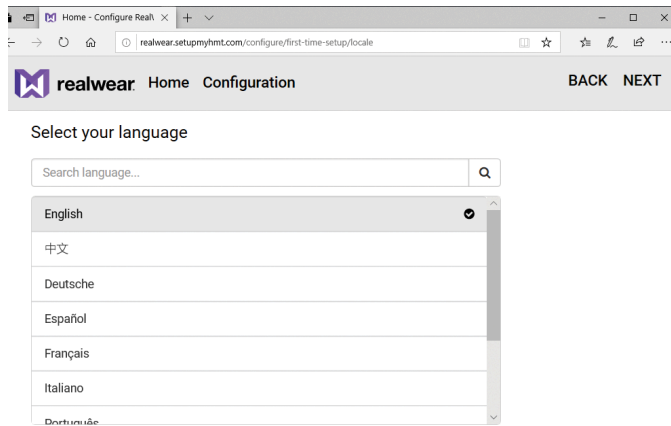


2. Click the **Configuration** button. The Configuration screen provides the Uniform Resource Locator (URL) where you must go to configure the HMT as a series of steps.

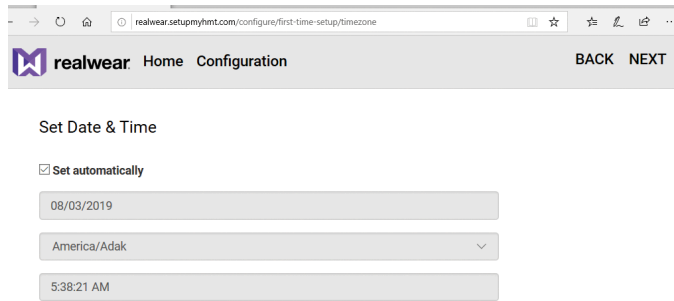


3. Click **First Time Setup**.

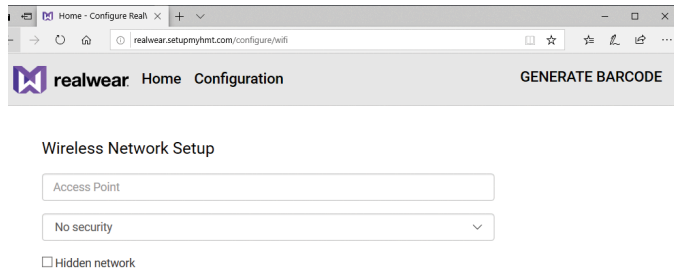
4. Select **Language** and then click **NEXT**.



5. Set **Date** and **Time** using the drop-down menus and click **NEXT**.



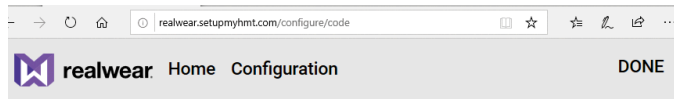
6. Set **Wireless Network**. Manually enter the network settings as provided by your Administrator.



7. When complete, click **GENERATE BARCODE** on the right.

8. Open your browser. The Configuration screen provides the URL where you must go to configure the HMT-1.

9. This step will generate a **QR Code**. Simply follow the instructions onscreen to complete your network setup. Afterward, return to the Configuration page and at the top-right, and click **DONE**.



Scan this code

On your HMT, go to My Programs > Configuration
then point the camera at this QR code



This completes the procedure.

4.4. Install Onsite Connect for Realwear

Once the HMT is configured to operate with your PC, download the Onsite Connect APK to your PC. To install Onsite Connect, you will need to:

1. Connect your PC to your HMT using the USB connector.
2. Launch Realwear Explorer and Install **Onsite Connect** by dragging and dropping the Onsite APK file onto the **DRAG AND DROP APKS HERE** region within **Realwear Explorer**.

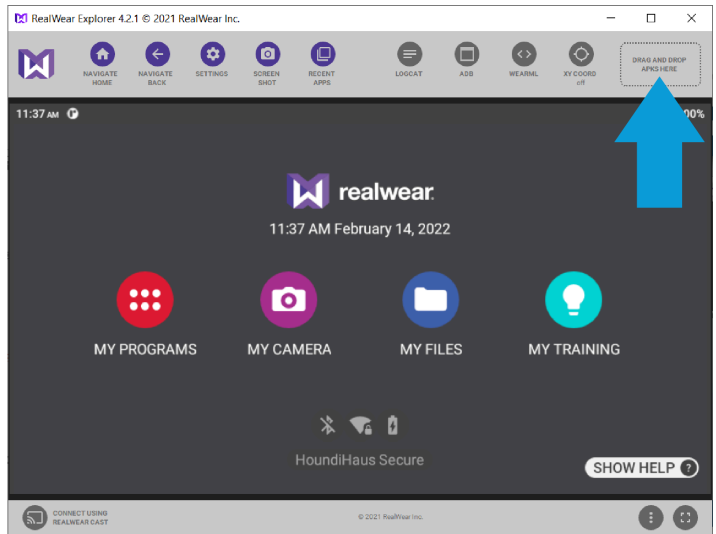


Figure 4-12 Realwear Explorer

4.4.1. Installing Onsite-Connect for Realwear

1. Download the latest **Onsite APK** from Librestream's [Support](#) site and scroll down the page to the **Realwear HMT > DOWNLOADS AND UPDATES** section.
2. Click the **Download the latest APK (Link)**.
3. Launch **Realwear Explorer**.

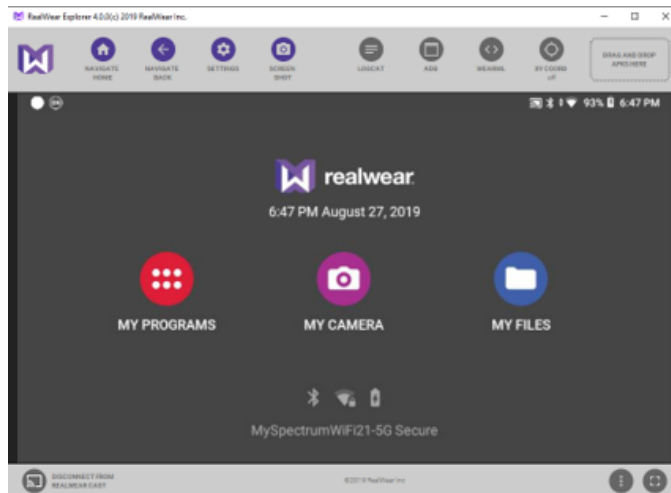


Figure 4-13 Installing APK's

4. Load the **APK** by dragging the file onto the top right corner of the **Realwear Explorer** window where it says **DRAG AND DROP APKS HERE**. A progression bar appears.

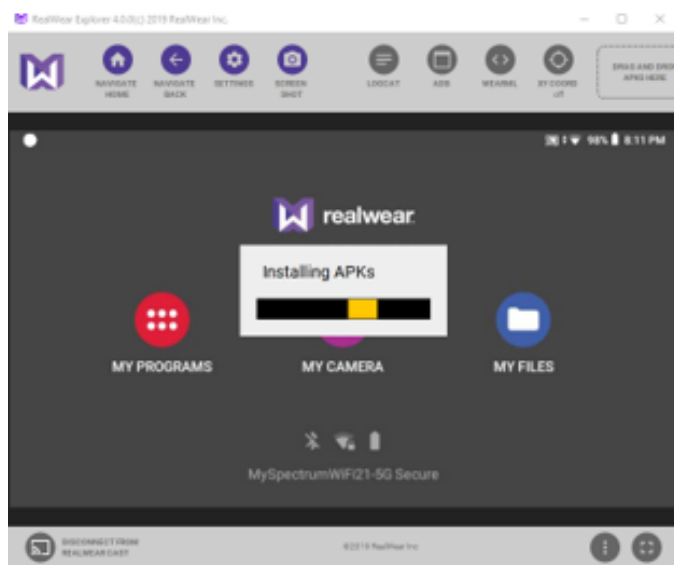


Figure 4-14 Installing APK's

This completes the procedure.

4.5. Configure Realwear Settings

Speak **Navigate Home** to access the home screen. Speak or click **Settings > Realwear**. These settings allow you to:

- Enable **Image Stabilization** to minimize camera movements.
- Modify **Field of View** to be **Narrow** or **Wide**.
- Enable **File Sharing** with your PC (Optional)
- Update your **HMT Firmware** by performing a **Wireless Update**.

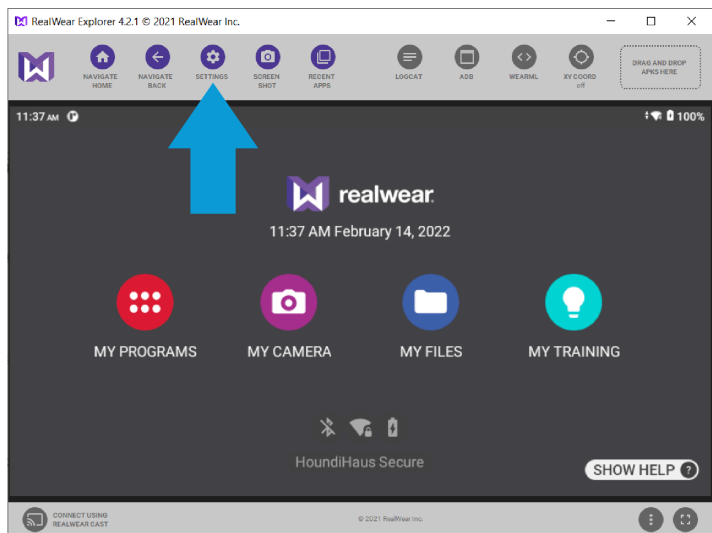


Figure 4-15 Realwear Explorer Settings

4.5.1. Enabling Image Stabilization

1. Launch **Realwear Explorer**.

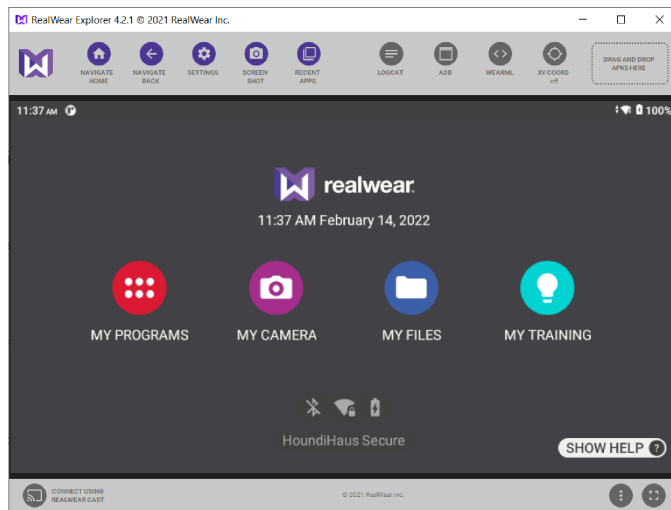


Figure 4-16 Realwear Explorer

2. Click or say, "**MY PROGRAMS**".
3. Click or say "**SETTINGS**".
4. Use your arrow-keys to scroll down the page and select **RealWear**.

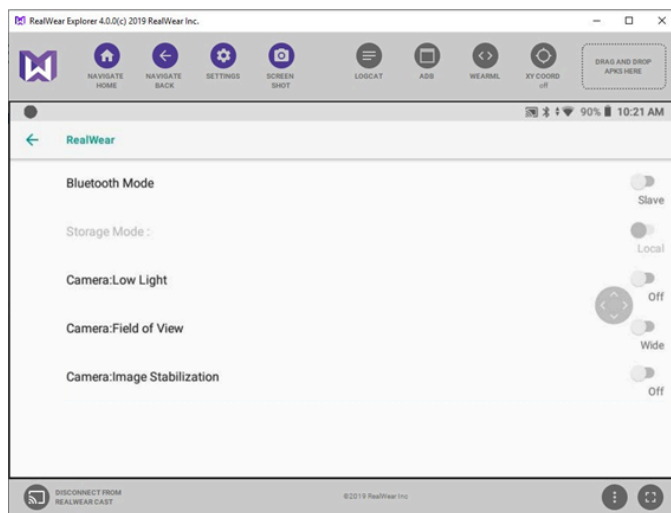


Figure 4-17 Configuring Realwear Settings

5. Click or say "**Camera: Image Stabilization**" to enable the setting as **On**. This completes the procedure.

4.5.2. Setting the Field of View

1. Launch **Realwear Explorer**.

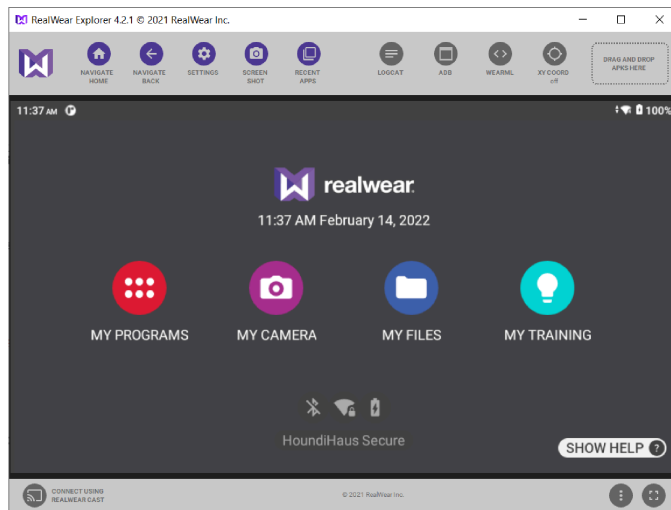


Figure 4-18 Realwear Explorer

2. Click or say, "**MY PROGRAMS**".
3. Click or say "**SETTINGS**".
4. Use your arrow-keys to scroll down the page and select **RealWear**.

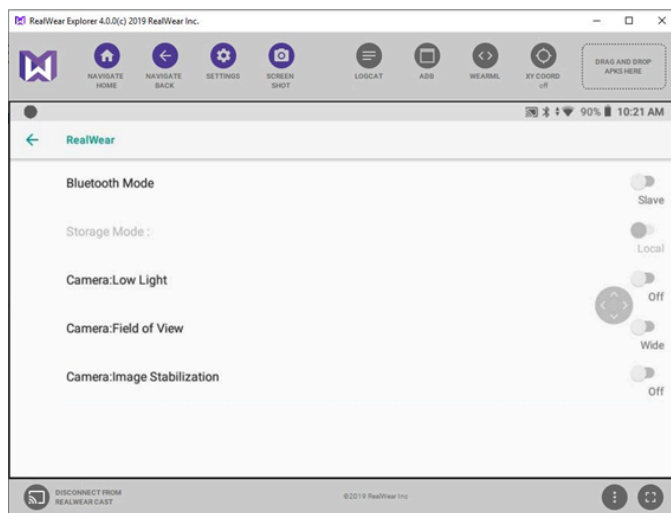


Figure 4-19 Configuring Realwear Settings

5. Click or say "**Camera: Field of View**" to toggle the option from **Narrow** to **Wide**, as necessary. This completes the procedure.

4.5.3. Performing a Wireless Update

1. Launch **Realwear Explorer**.

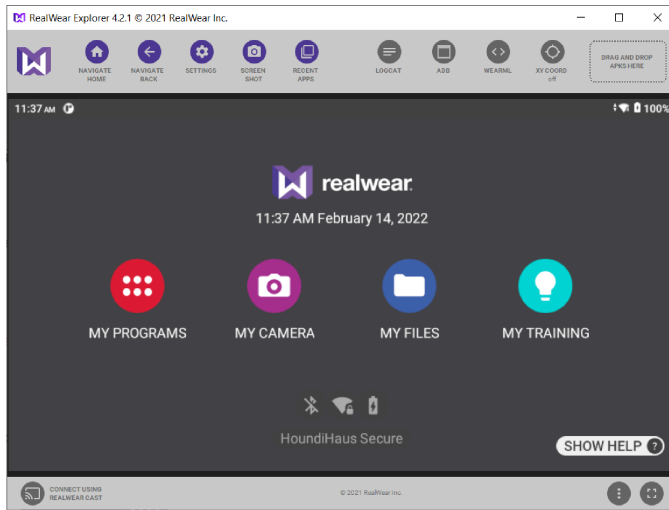


Figure 4-20 Realwear Explorer

2. Click or say, "**MY PROGRAMS**".
3. Click or say "**WIRELESS UPDATE**".

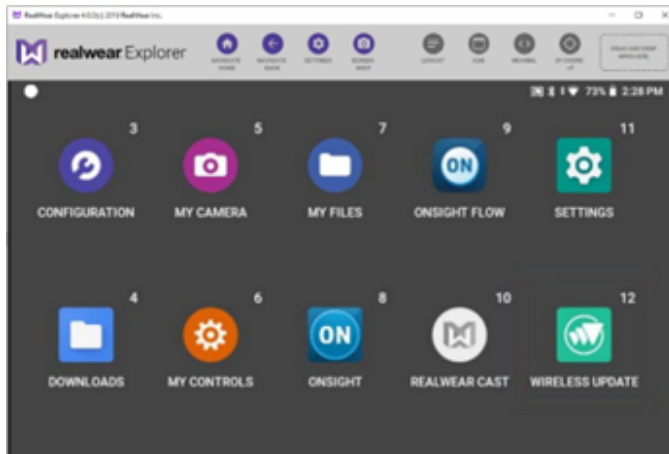


Figure 4-21 Wireless Update

4. Click or say "**CHECK FOR UPDATES**".

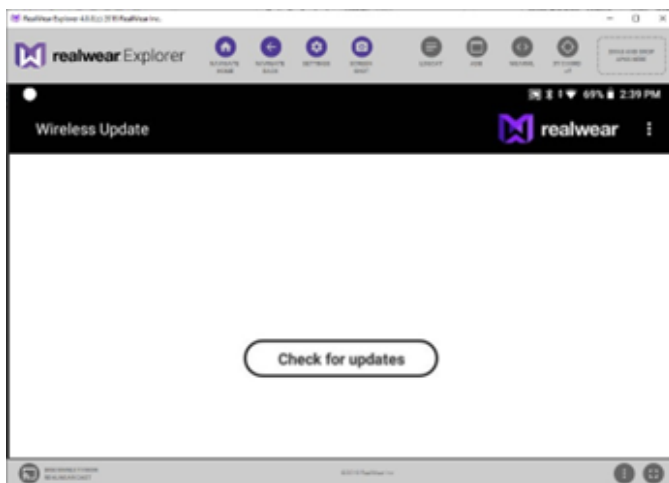


Figure 4-22 Check for Updates

5. A message will appear that says Your device's software is currently up to date. This completes the procedure.

4.5.4. Enable File Sharing with your PC (Navigator 500 Option)

1. Launch **Realwear Explorer**.

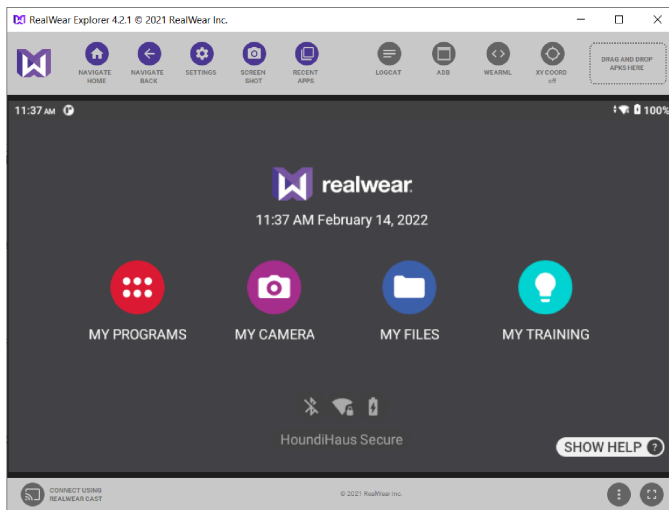


Figure 4-23 Realwear Explorer

2. Click or say, "**MY PROGRAMS**".
3. Click or say "**SETTINGS**".
4. Click or say "**CONNECTED DEVICES**".



Figure 4-24 Connected Devices

5. Click or say "**USB**" followed by "**File Transfer**" to enable file sharing with your PC as necessary.




Figure 4-25 USB

This completes the procedure.

5. ACCESS GLOBAL DEVICE COMMANDS

Global voice commands can be activated from any application or screen using multiple languages.

Table 5-1 Global Device Commands


Voice Commands	Action
Navigate Home	Navigates to the Home screen.
Navigate Back	Navigates to the Previous screen.
My Controls	Navigates to the System Control Panel .
Mute Microphone	Mutes the microphone temporarily.  Tip: This command can prevent other users from activating your device.
Recent Applications	Opens applications running in the background and enables you to Dismiss (Close) one or All apps.
Show Help	Displays a pop-up window with help commands associated with the current screen.

 **Tip:** **Show Help** displays on all screens and it is the **one command you need to learn**. Show Help commands are specific to the screen you are currently viewing.


5.1. Speech Recognition (Say What You See)

When using Speech Recognition, consider that:

- All commands associated with a specific screen are displayed onscreen.
- It utilizes the latest technology for noise cancellation and can operate in noisy environments.
- You must say the command name to activate.
- You must say “**Select Item #**” to activate the command.

 **Note:** Where # represents a number onscreen. When you navigate from one screen to another, all selectable items will be numbered.

- The voice command “Select Item #” simulates a mouse click or tap on that item.

 **Tip:** In many cases, such as when you are viewing a list of images or recordings, “Select Item #” will be the only way to select a specific item for sharing or playback.

6. LAUNCH ONSIGHT CONNECT

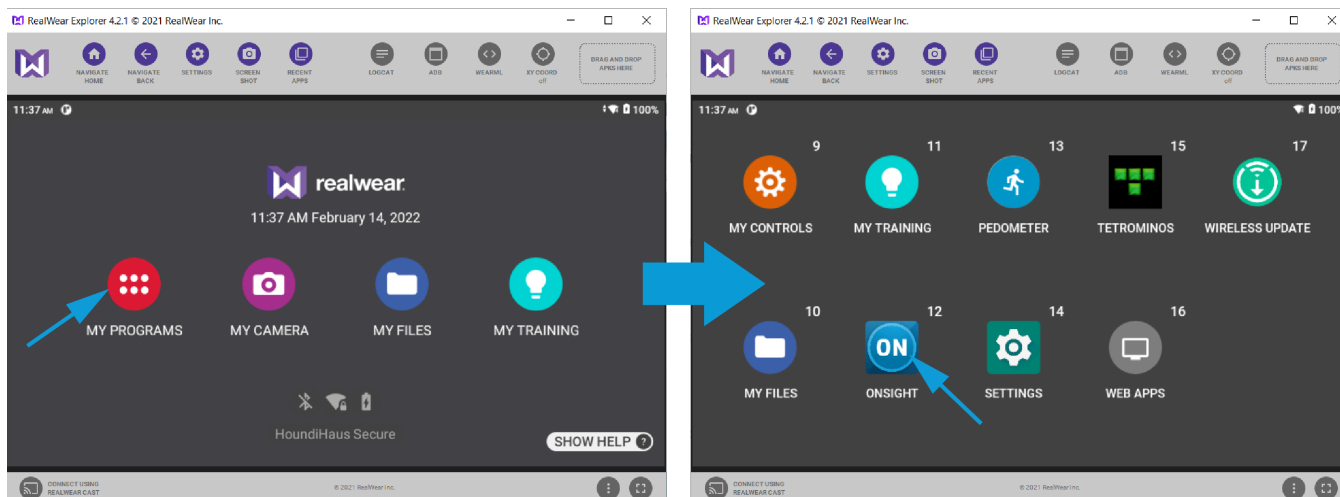


Figure 6-1 Launching Onsite Connect

Once installed, **Onsite Connect** can be launched by saying:

1. Say "**Navigate Home**" to access the **Home** screen.
2. Say "**MY PROGRAMS**" to access your applications.
3. Say "**ONSIGHT**" to launch Onsite Connect application.

6.1. Login to Onsite Connect

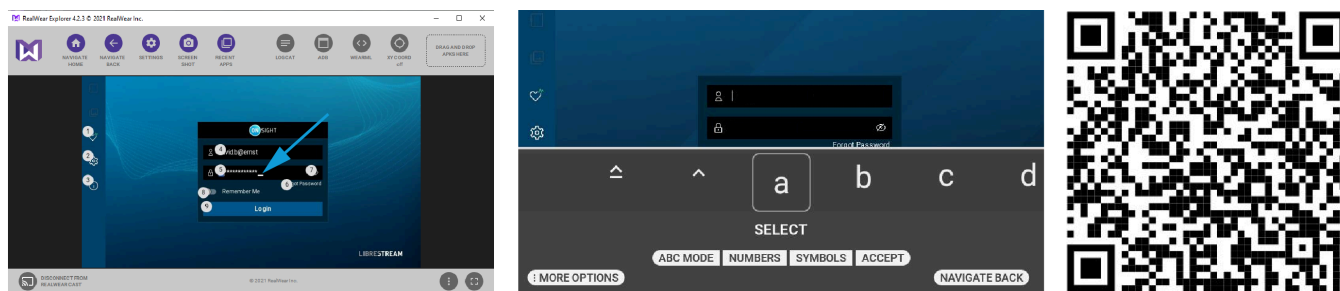


Figure 6-2 Login

There are several methods available to log in to **Onsite Connect** on an HMT. These include:

- Using **Realwear Explorer** and your PC's Keyboard & Mouse (Manual Method).
- Using the **HMT Speech Keyboard** and voice commands (Manual Method).
- Using a **Quick Response (QR)** code (Automated Method and best practice).

Login Credentials

You must have been assigned an account from your site Administrator in order to log in to **Onsite Connect**. Your login credentials will include:

- **User Name** — Say "**Set User Name**" or "**Select Item 4**" to enter your user name using the **Realwear Explorer** application or the **HMT Speech Keyboard**.
- **Password** — Say "**Set Password**" or "**Select Item 5**" to enter your password.

Additionally, the following parameters and options can be set:

- **Forgot Password** — Say **“Forgot Password”** or **“Select Item 6”** to reset your password.
- **Display Password** — Say **“Display Password”** or **“Select Item 7”** to display all characters.
- **Remember Me** — Say **“Remember Me”** or **“Select Item 8”** to automate the login procedure for Onsite Connect.
- **Login** — Say **“Remember Me”** or **“Select Item 8”** to begin using Onsite Connect.

If this is your first-time using the HMT, the login screen will appear with the **Capture Mode** button visible. You can ignore this button if you have been provided a user name and password.

i Tip: If you do not have an Onsite Connect user account, you may use **Capture Mode** to record content now and upload it later.

Once you complete your login, the **Capture Mode** button will disappear from subsequent logins.

6.2. Realwear Explorer Login Using PC Keyboard & Mouse

If you have launched **Realwear Explorer** and are connected with a PC Keyboard & Mouse, you can type and enter information within the fields by clicking within the field and typing with the keyboard.

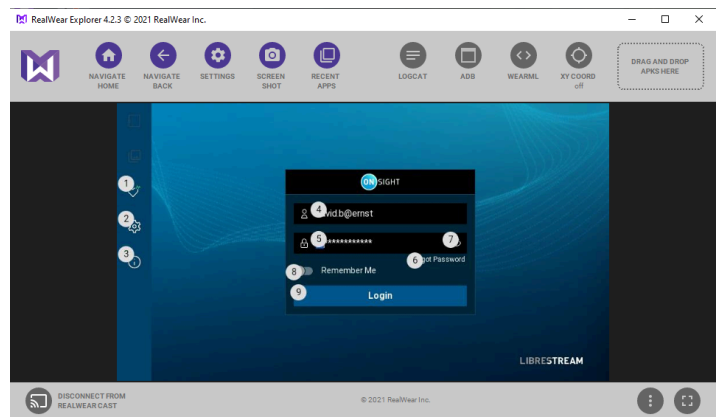


Figure 6-3 Typing using a PC Keyboard in Realwear Explorer

6.3. HMT Speech/Voice Keyboard

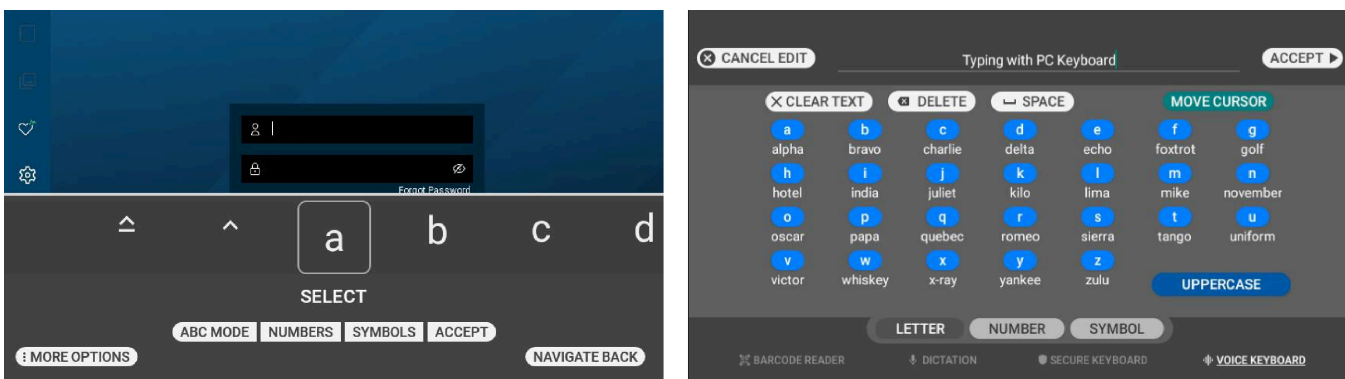


Figure 6-4 HMT Speech Voice Keyboard & Navigator 500 Voice Keyboard

The Speech/Voice Keyboard (HMT-1/Navigator 500) is the recommended method for entering text using the HMT. Additional modes are available that include Dictation, Secure Keyboard, and Barcode reader.

Whenever a text entry field is brought into focus or selected, the hands-free Speech/Voice keyboard is displayed automatically.

Text Entry Best Practices

When entering text, remember to:

- Say the *Phonetic Alphabet* word (**MIKE**, or **TANGO**) to enter a character.

- Say "**Numbers**" to access number characters.

i **Tip:** You can say "**Point**" to enter a period.

- Say "**Letters**" to access alpha characters.
- Say "**Caps lock**" to switch from capital to lowercase

Refer to Realwear’s Knowledge Base for more information regarding the [Speech Keyboard](#) and entering text.

6.3.1. Using the HMT Speech Keyboard to Login

Wearing the HMT, launch **Onsight Connect** by saying "**Navigate Home**", "**MY PROGRAMS**" followed by "**Onsight**".

In this procedure, you will login to Onsight Connect.

Set User Name and Password

1. Say "**Show Tool Tips**" to display all commands.

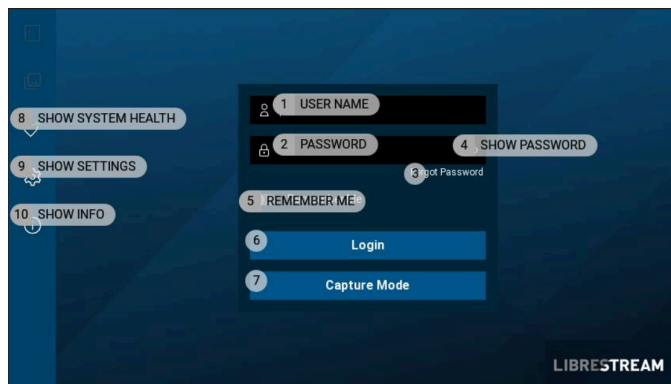


Figure 6-5 Login Using the Speech Keyboard

2. Say "**SET USERNAME**" or "**Select Item 1**" and enter your Username.

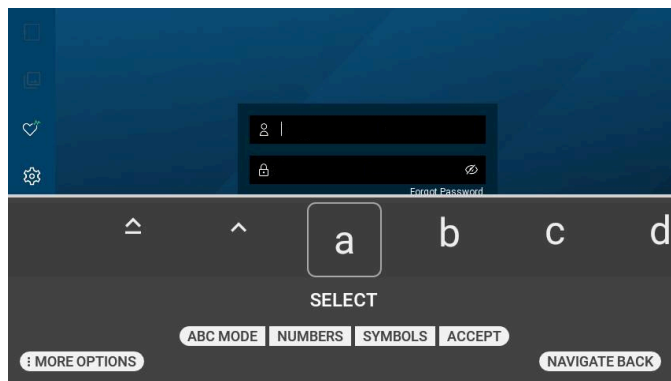


Figure 6-6 Speech Keyboard

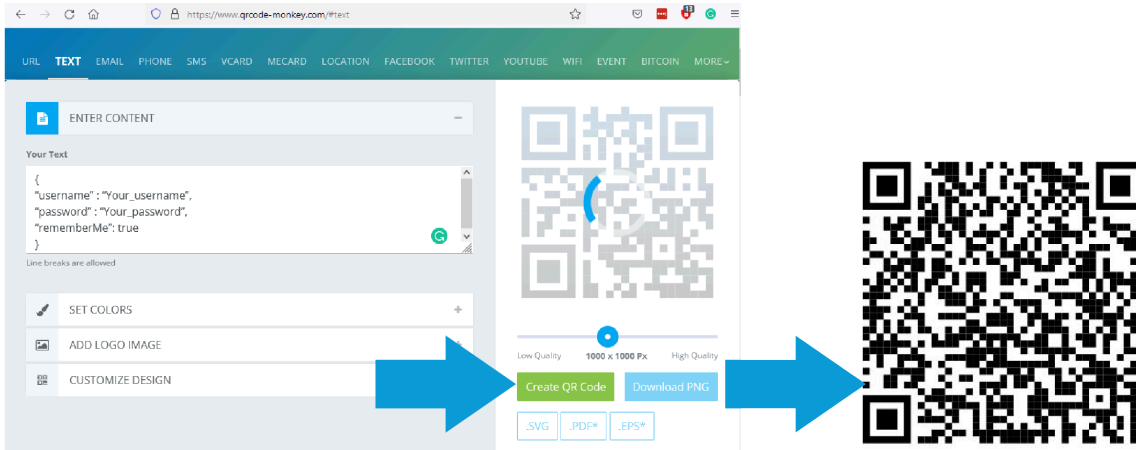
Note: When entering text, a Speech/Voice Keyboard HMT-1/Navigator 500) will appear. For specific commands, refer to [HMT Speech/Voice Keyboard \(on page 26\)](#)

i **Tip:** You can also pan your HMT right or left by turning your head to the left or right. The keyboard will advance to the desired character. Once you have positioned the keyboard over the character, say "**SELECT**" to enter the character.

3. Say "**PASSWORD**" or "**Select Item 2**" and enter your password.

4. Say **"REMEMBER ME"** or **"Select Item 5"** to automate and speed up the login process.
5. Once all the characters have been entered, say **"Accept"**. This closes the keyboard.
6. Say **"Login"**. If a prompt appears, say **"Close"** to exit the prompt and **enable GPS in Onsite**. This completes the procedure.

6.4. QR Code Login



You can create a **Quick Response** (QR) code that contains your login credentials to speed up the process of logging into Onsite Connect. Use a QR code generator to create the code. For example, <https://www.qrcode-monkey.com/#text>

To login using a QR Code say **"Scan Code"** at the login screen.




Note: Prior to logging in you must create a QR code containing your login credentials.

The QR Code format must match the example text:

```
{
"username" : "HMT@librestream.com",
"password" : "MyPa$$word",
"rememberMe": true
}
```

Copy and paste the example text into a simple text editor, e.g., Notepad. Replace the text with your user name and password then copy the text into the QR Code generator.

 **Note:** Use ANSI text only when generating the QR Code.

6.4.1. Generating a QR Code

To generate and use a QR code, you can:

1. Select and copy the provided text.

```
{
"username" : "HMT@librestream.com",
"password" : "MyPa$$word",
"rememberMe": true
}
```

2. Paste the text into a text editor and modify the **username** and **password** values to match your login.
3. Access a QR Code generator like [qrcodemonkey](https://www.qrcode-monkey.com).

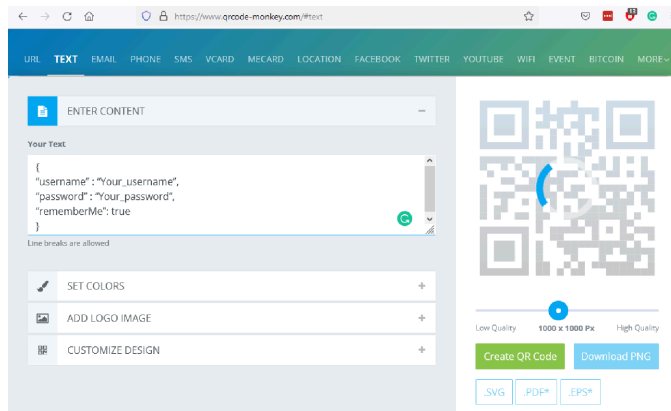


Figure 6-8 QR Code Monkey

4. Replace "Your_user name" and "Your_password" with your login and password information.
5. Click the **Create QR Code** button.
6. Click the **Download PNG** button to save the QR code to your device.
7. Open the image file within an image viewer.
8. When you are logging into Onsite Connect for the first time, say "**Scan Code**".
9. Point the camera at the QR code and wait for the login to succeed.
This completes the procedure.

6.5. Contacts

When Onsite Connect starts, your **CONTACTS** list will open by default. To close the contact list, say **“Hide Contacts”**. Conversely to display contacts, say **“Show Contacts”**.

Note: The contacts displayed were added by your Onsite Administrator. Using an HMT, you are unable to add contacts from within Onsite.

Contacts display:

- **Contact Name** — Number to the right of the contact's name.
- **Contact's name and SIP address** — Far right number.

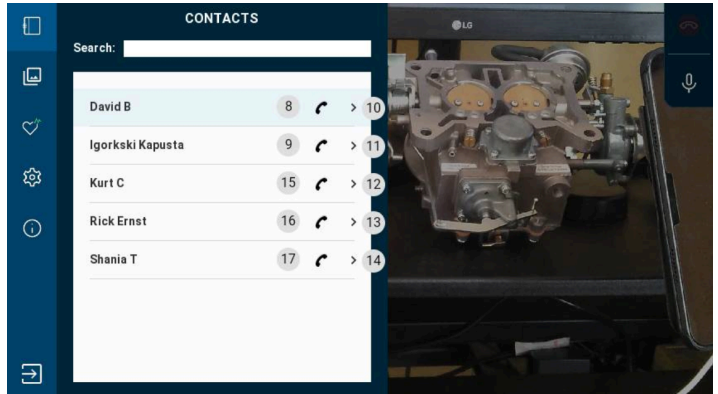


Figure 6-9 Contacts

Calling Commands

Say **“Select Item #”** (The Far right number) to display a contact's name and SIP address.

Say **“Call + (Contact's Name)”** or **“Select Item #”** (Number to right of the contact's name) to make a call.

6.6. System Health

Before making any calls, you should check the **System Health**. It provides a visual indication for call quality using color. For example, when system health is **Green**, you can make or receive calls from anywhere.

For specific details on System Health, say **“Show System Health”**. If System Health and any of its services display in **Red**, you will be unable to make/receive calls and should contact your internal Onsite administrator immediately.

Tip: The top four services must be green for you to make a call.

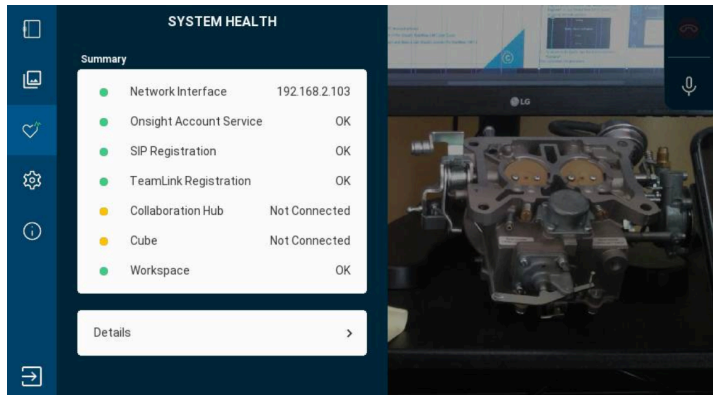


Figure 6-10 System Health

Say **“Hide System Health”** to close System Health.

6.7. Onsite Voice Commands

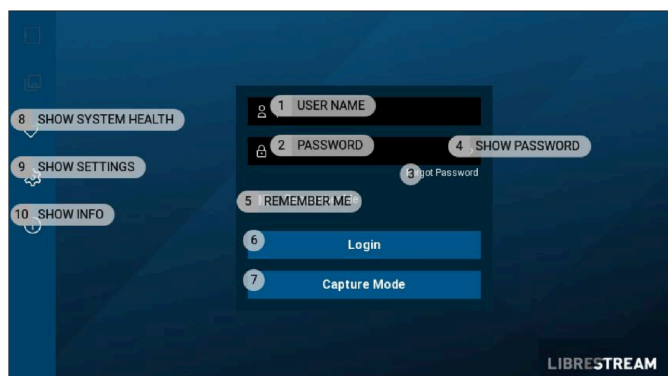
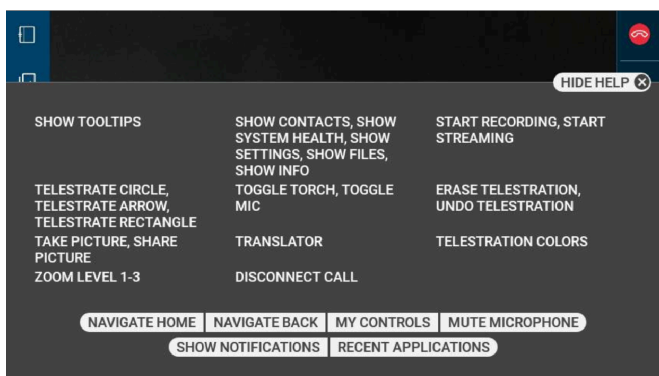


Figure 6-11 Voice Commands — Show Help & Show Tool Tips

Global Voice Commands can be activated from any application or screen using multiple languages. Use the **Show Help** command to display context sensitive commands. Conversely, use the **Hide Help** command to close the help window.

Onsight Voice Commands are accessible only within the Onsight Connect application. Use the command **Show Tool Tips** to display the available Onsight commands on any screen within the application. Conversely, use the **Hide Tool Tips** command to dismiss the command list.

Table 6-4 Onsight Voice Commands




Voice Commands	Action
Show Help	Shows available voice commands
Hide Help	Hides available voice commands
Show Tool Tips	Shows the Tool Tips overlay
Hide Tool Tips	Hides the Tool Tips overlay
Take Picture	Take a picture from the current video
Show Contacts	Shows the contacts list
Hide Contacts	Hides the contacts list
Show System Health	Shows the system health view
Hide System Health	Hides the system health view
Show Settings	Show Settings view
Hide Settings	Hides Settings view
Show Files	Shows the list of files
Hide Files	Hides the list of files
Show Info	Shows the Information view
Hide Info	Hides the Information view
Toggle Mic	Turns the microphone ON or OFF
Toggle Telephoto	Turns the telephoto mode ON or OFF (Navigator 500)
Toggle Torch	Turns the camera light ON or OFF
Erase Telestration	Erases the current telestration
Undo Telestration	Deletes the most recent telestration
Telestration Colors	Displays a pop-up menu that allows the user to define telestration color
Telestrate Arrow	Create a telestration arrow on the current video
Telestrate Circle	Create a telestration circle on the current video
Telestrate Rectangle	Create a telestration rectangle on the current video
Start Recording	Start recording the current video
Stop Recording	Stop recording the current video
Start Streaming	Start streaming the current video to others in the current call  Note: When you are streaming video, the Share Video  icon appears as a status indicator next to the Hang Up icon within the Right Toolbar .
Stop Streaming	Stop streaming the current video to others in the current call
Hide Video Sources	Hides the pop-up showing the video sources
Translator	Displays the Translator settings

Table 6-4 Onsight Voice Commands (continued)

Voice Commands	Action
Zoom Level 1	Zoom the video to level 1 (Normal size)
Zoom Level 2	Zoom the video to level 2 (2x digital zoom)
Zoom Level 3	Zoom the video to level 3 (3x digital zoom)

Mute Microphone

You can use the **Mute Microphone** command to stop the HMT from listening for commands. A dialogue box appears advising you to press the **ACTION** button to reactivate the microphones.

 **Tip:** The **ACTION** button is next to the **Power** button.

To resume operation, press the **ACTION** button to reactivate the microphones for the HMT. When the HMT is not being used, muting the microphone prevents unintentional commands from being triggered from conversations.

For a comprehensive reference of voice commands, grouped by category, and sorted by language, you can refer to [Onsight Realwear Voice Commands](#)

Related information

[ACCESS GLOBAL DEVICE COMMANDS \(on page 23\)](#)

6.7.1. Onsight Flow Voice Commands

When working within Onsight Flow, you can use the **Request Help** command to launch **Onsight Connect** from within a workflow.

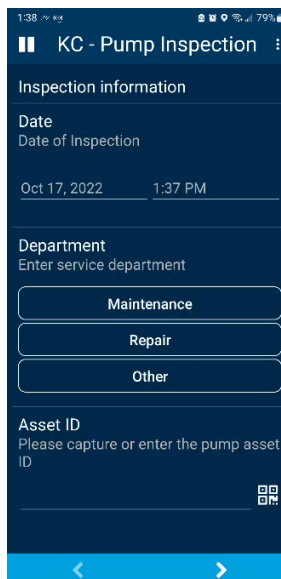


Figure 6-12 Onsight Flow

6.8. Navigator 500 Features

The Navigator 500 supports new camera enhancements that include:

- **Low Light** — Enables the camera to read serial numbers or characters in dimly lit environments. This feature works Down to 5 Lux (Unit of Illumination) or candle lighting conditions and it works automatically in the background to improve readability.
- **Telephoto** — Enables the camera to zoom-in to 300% and this improves the scanning capability for Quick Response (QR) codes and includes image stabilization. Say **Toggle Telephoto** to enable On or Off.




Tip: The Telephoto  icon appears in the top-right corner of the view finder as a status indicator when it is enabled.



Figure 6-13 Toggle Telephoto & Low Light Conditions

6.9. Multiparty Calls

The Navigator 500 supports the ability to host a multiparty call that includes more than two participants. All participants in a multiparty call hear the same audio, display the same video, and can collaborate on the video using telestration. There are several methods to include Participants in an Onsight Call:

- The **Host** calls up to two people from their **Contacts** list.
- A **Participant** calls the **Host** to join the call.
- One of the **Participants** activates **Share Video**.

To learn more details about multi-party calling, please refer to [Onsight Multiparty Calls — How to Guide](#).

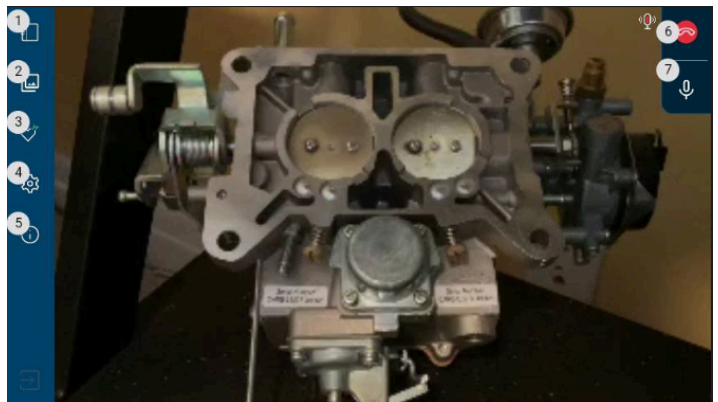


Figure 6-14 Multiparty Call

6.10. Onsight Translator

Onsight Connect for the Realwear HMT provides **Natural Language Processing** (NLP) services. The user can display Onsight Translator by saying **“Translator”** and then defining which languages to set to in the **Translate from** and **To** drop-down menus. This feature can be used during a call and during the playback of recordings.

For more information, refer to the [Onsight Translator Guide](#).

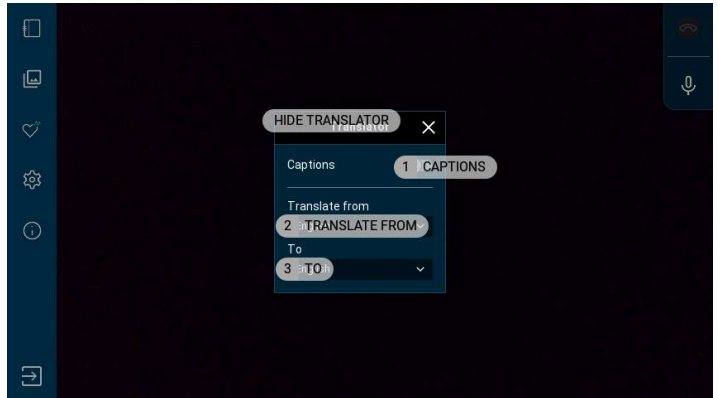


Figure 6-15 Onsight Translator

7. ONSIGHT CUBE

The Onsite Cube is an industrial wearable that can function in rugged environments and works with Onsite Connect running on iOS, Android, and Windows devices. Technicians can use the Onsite Connect and the Cube to share video and audio for real-time collaboration with remote experts.

Additional Features

Using a cube with Onsite Connect enables you to further enhance your existing capabilities by adding:

1. Dual Cameras:
 - Optical, thermal and fusion modes
2. Spot temperature with laser precision pointing
3. Emissivity support
4. Enhanced Focus and Zoom controls

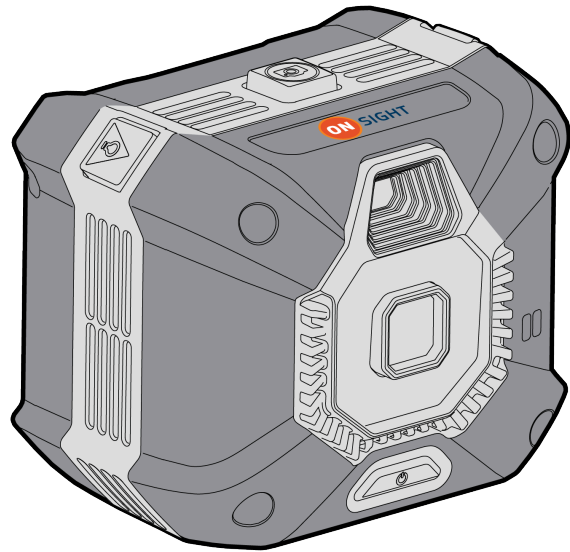


Figure 7-1 Onsite Cube

7.1. Bluetooth Pairing With an Onsite Cube

Bluetooth (BT) must be enabled on the HMT device to configure the Cube.

In this task, you will pair Onsite Connect using an HMT with an Onsite Cube.

To use Bluetooth to pair a Cube with an HMT device, you must:

1. Power on the Cube.
2. Log in to Onsite Connect on your host device.
3. Hold your host device close to the front of the Cube to BT pair.
4. You will hear a voice prompt **Begin Pairing** and Host Connected when complete.
5. Say **Connect** when the **Invitation to Connect** appears.
6. The Cube receives its WiFi-Direct configuration from your paired host device automatically. The connection status will be **Green**.

Refer to the [Onsite Cube User Guide](#) for further details.

7.2. Cube File Management

When downloading files from the Cube you will see the **Download Status** screen. Say **Files** to return to the **Cube** tab.


Refer to the [Onsite Cube User Guide](#) for further details.

7.3. Image Capture & Recording While Paired to a Cube

When your HMT is paired to a Cube, any images or video that you capture are stored locally on the HMT. They are saved in the **My Files** section of the **Files** tab. They are not saved in the Cube's local storage.

TIP: Any images and recordings saved while your HMT is paired to a Cube are stored locally on the HMT.

When operating the Cube in Stand-alone mode all images and recordings are stored locally in the Cube's internal storage. These files can be accessed by pairing with the Cube and going to **FILES > Cube**. You can download files from the Cube to your HMT by selecting the thumbnail image of the files and saying **Download** on the menu. Cube files can be downloaded or deleted from the Cube.

Once the files have been successfully downloaded from the Cube, they are placed within the **My Files** tab in a date stamped folder. All files downloaded from the Cube will have a Cube  icon displayed on their thumbnail image.

Appendices

FAQs

Lookup Voice Commands

Question: How do I know what voice command to say or how to locate available voice commands in the Onsight app?

Answer: At any time, you can say **“Show Help”** or **“Show Tool Tips”** to see the available commands.

Capture Mode

Question: What is Capture Mode?

Answer: Capture Mode enables you to use Onsight Connect without a user account. You can capture content and share the content later when you login with your user credentials. Once you login Capture mode is no longer available.



HMT is Not Responding to my Voice

Question: Why isn't the HMT responding to my voice commands?

Answer: The microphone can be muted at the system level. To un-mute the microphone press the **Action** button on the side arm of the HMT.

Call Participants Can't hear me

Question: The HMT is responding to my voice commands but call participants can't hear me?

Answer: The microphone  can be muted within the Onsight application level. To un-mute the microphone say **“Toggle Mic”**. The microphone  icon in the upper right of the Viewfinder will change to indicate the mute status.

How do I make a call?

Question: How do I make a call?

Answer: Login to Onsight Connect. Display the Contacts panel if it is not already visible. Say the name of the Contact you wish to call or say **“Show Tool Tips”** then say the number displayed beside the handset icon of the contact you wish to call e.g., Say **“Select Item 5”**.

Streaming Video

Question: How do I stream video?

Answer: Once a call has been established say **“Start Streaming”**, this will start the video stream from the HMT to the remote participants.

HMT and Connectivity to a Network

Question: How do I connect the HMT to a network?

Answer: Connect the USB cable from the HMT to your Personal Computer (PC). Launch a browser and navigate to <https://realwear.setupmyhmt.com/configure> and select **Configuration**. Select the **Wireless Network Setup** button and follow the onscreen instructions. Once you have connected to a network you can launch Onsight and place a call.

Language Support

Question: What languages are supported?

Answer: Onsight Connect supported languages include French, Chinese (Simplified), Japanese, German, Italian, Portuguese (Brazilian and Portugal), Swedish, Spanish, Russian and Korean.

For More Information

Please contact support@librestream.com or call 1.800.849.5507 or +1.204.487.0612.

Related information

[Support](#)

[Just-in-Time Training Materials](#)

Realwear Specifications

Manufacturer/Model	Realwear Nav500	Realwear HMT-1	Realwear HMT1z1
Ingress Protection (IP) Rating	IP66	IP66	IP66
MIL-STD 810G	Yes	Yes	Yes
ANSI Z87.1			
ATEX	NA	NA	Zone 1; CSA C1/D1
Other	NA	NA	NA
Display and optics	Monocular	Monocular	Monocular
• Field of View (FOV)	20 degree (FOV)	20 degree FOV	20 degree FOV
• Screen Resolution	WVGA	WVGA	WVGA
Sensors	None	None	None
• Eye Tracking	None	None	None
• Depth Sensor	None	None	None
• Image Stabilization	3 Inertial Measurement Units (IMU) for image stability	IMU for Image stability	IMU for Image stability
Camera	48MPixel Camera 12MP active, 6X HD Zoom	16MP	16 MP
• Video Resolution	1080p60 video,	1080p30 video	1080p30 video
Audio			
• Speakers			
• Microphone	4 microphone array	4 microphone array	4 microphone array
• Noise Cancellation	100 dbA	95 dbA	95 dba
Weight	270g	385g	430 grams
Fit	Head or Helmet Mount	Head or Helmet Mount	Head or Helmet Mount
• Compatibility	Compatible with multiple Personal Protective Equipment (PPE) options ie., Helmets	Compatible with multiple PPE options ie., Helmets	Compatible with multiple PPE options ie., Helmets
Gestures/Advanced UI			
• Both Hands Recognition	None	None	None
• Gestures	None	None	None
Voice Commands	Built In	Built In	Built In
• Number of Languages	12	13	12
Battery Life	3-4 hours	9-10 hours	8-10 hours
• Replacement Battery	Hot Swappable		Internal Battery
• Charge While Using			
Usability	Fingerprint reader, Barcode scanner	Bar Code reader	Bar Code reader
• TouchPad/TrackPad	none	none	none
• Buttons	3	1	1
• Light/Flashlight		LED	LED Flashlight

Manufacturer/Model	Realwear Nav500	Realwear HMT-1	Realwear HMT1z1
Memory		32GB Internal, 256 GB MicroSD	16 GB internal, 64GB microSD slot
Positioning	GPS, GLONASS, A-GPS	GPS, GLONASS, A-GPS	GPS, GLONASS, A-GPS
External Ports	3.5 mm Audio, USB-C	3.5mm audio, USB-c for Charging and data	3.5mm audio, 1 micro USB for Charging and data

Related information

[Support](#)

[Just-in-Time Training Materials](#)

Glossary

American National Standards Institute

The American National Standards Institute (ANSI) is the private, non-profit organization that supports the development of technology standards across various industries in the United States.

American National Standards Institute (ANSI)

ANSI

ANSI Z87.1

American National Standards Institute (ANSI) standard Z87.1 classifies eye protection to minimize injuries from eye hazards. Eye protection is classified as impact or non-impact rated. Impact-rated eye protection must pass specific mass and high-velocity tests and include protection from the side. Non-impact rated eye protection does not protect the wearer from high mass and velocity hazards.

American National Standards Institute (ANSI) Z87.1

ANSI Z87.1

Atmospheres Explosible

ATmospheres EXplosible (ATEX) is the applied name for two European directives whose objective is to improve health and safety protection for workers at risk from hazardous environments. ATEX is derived from:

- **Directive 99/92/EC** also known as "ATEX 137" or the "ATEX Workplace Directive".
- **Directive 2014/34/EU** also known as 'ATEX 114' or "The ATEX Equipment Directive"

Atmospheres Explosible (ATEX)

ATEX

Bel

A Bel represents a unit for measuring sound intensity (Loudness) that is equal to 10 decibels.

Bel (B)

B

Bluetooth

Bluetooth (BT) is a unifying communication standard for short-range wireless communication that enables devices (Computers, mobile phones, and peripherals) to transmit data or voice wirelessly over a short distance.

Bluetooth (BT)

BT

Decibel

A Decibel (dB) is a unit of measure for the intensity or "Loudness" of sound measured in one tenth of a *Bel (B)*.

Decibel (dB)

dB

A-weighted Decibels

A-weighted Decibels (dBA) represent sound pressure levels associated with the "Loudness" in air as perceived by the human ear. A-weighted Decibels have been adjusted for the varying sensitivity of the human ear to low and high audio frequencies.

A-weighted Decibels (dBA)

dBA

Ingress Protection Rating

Ingress Protection (IP) rating measures how well protected a device is from solid and liquid objects and is typically followed by a number. For example, IP64. The first number represents an ingress rating against solid foreign objects. The second number represents an ingress rating against multiple forms of moisture. The range includes 0 - 6 with a higher number providing greater protection.

Ingress Protection (IP)

IP

Light Emitting Diode

A Light Emitting Diode (LED) is a semiconductor light source that is used as a backlight. LEDs emits light when current flows through the device.

Light Emitting Diode (LED)

LED

MIL-STD 810G

MIL-STD 810G is a military specification that guarantees a level of durability or "combat readiness" for technology based on a series of twenty-nine (29) tests. Most technology sold to the US military must be **MIL-STD 810G** compliant

MIL-STD 810G

Wi-Fi

Wi-Fi is often called WiFi or, wifi, Wi-Fi is short for Wireless Fidelity.

Wireless Fidelity (Wi-Fi)

Wi-Fi

Index

Numerics

- 16 MP Front Camera 39
- 180 grams 39
- 2 Axis Touchpad 39
- 3.5 mm Audio jack 39
- 300% 33
- 4 Microphone Array 39
- 5 LUX 33
- 640 x 400 OLED 39
- 6X Zoom Camera 39

A

- Accept 27
- Action button 7, 8, 8, 37
- Activate 23
- ADB Driver 11, 11
- Advanced UI 39
- American National Standards Institute (ANSI) 28
- Android 35
- Android Debug Bridge (ADB) 11
- ANSI text 28
- ANSI Z87.1 39
- APK 15
- App Store 12
- ATEX 39
- Audio 39

B

- Backward 10
- Barcode 39
- Barcode Reader 26
- Battery Life 39
- Begin Pairing 35
- Bluetooth 35
- Boom Arm 7, 8, 8
- Both Hands Recognition 39
- Bright 10
- Buttons 39

C

- Call 30, 34, 37
- Camera 5, 7, 8, 8, 17, 18, 20, 39
- Camera or characters 33
- Capture 35
- Capture Content 37
- Capture Mode 25, 37
- Characters 27
- CHECK FOR UPDATES 19
- Chinese (Simplified) 37
- Close 27
- Command Name 23
- Compatibility 39
- Computer 11
- Configuration 12, 12, 35
- Configure 35
- CONNECTED DEVICES 20
- Contact 37
- Contact Name 30
- CONTACTS 30
- Copy 28
- Create QR Code 29
- Cube 35, 35
- Cube File Management 35
- Cube Files 35

D

- Date 12
- Date Stamped Folder 35
- Deleted 35
- Depth Sensor 39
- Device 7
- Dictation 26
- Display and Optics 39
- Display Pod 7, 8, 8, 10
- Display Screen 10
- Division 1 39
- Dominant Eye 9
- Download 11, 35
- Download PNG 29
- Download Status 35
- Downloaded 35
- Dual Cameras 35

E

- Ear 9
- Emissivity Support 35
- Enable GPS in Onsite 27
- Enhanced Focus 35
- Erase Telestration 30
- Exit 27
- External Ports 39
- Eye Tracking 39
- Eye wear 10
- Eye-glasses 10

F

- Field of View 16, 18
- Field of View (FOV) 39
- File Sharing 16
- File Transfer 20
- Files 35, 35
- First Time Setup 12, 12
- Fit 39
- Five Seconds 10
- Flashlight 7, 8, 8
- Forefingers 9
- Forgot Password 25
- Forward 10
- French 37
- Fusion Mode 35

G

- Generate Barcode 12
- Generating a QR Code 29
- German 37
- Gestures 39
- Global Device Commands 23
- Global Voice Commands 30
- Google Play 12
- Green 30

H

- Hands-free 26
- Head Mounted Tablet (HMT) 5
- Head Strap 10
- Helmet Mounted 39
- Hide Contacts 30, 30
- Hide Files 30
- Hide Help 30, 30
- Hide Info 30

- Hide Settings 30
- Hide System Health 30, 30
- Hide Tool 5
- Hide Tool Tips 30
- Hide Video Sources 30
- HMT 35, 37
- HMT device 35
- HMT Firmware 16
- HMT Micro-USB 11
- HMT Speech Keyboard 25, 26, 27
- HMT-1 Components 7
- HMT-1Z1 7
- HMT-1Z1 Components 8
- HMT's Location 5
- Home 5, 25
- Home Screen 16
- Host 33
- Host Connected 35
- HTM-1 7

I

- Identify 7
- Image 35
- Image Stabilization 16, 17, 20, 39
- Industrial Wearable 35
- Ingress Protection 39
- Install 11
- iOS 35
- IP64 39
- Iristick Specifications 39
- Italian 37

J

- Japanese 37

K

- Korean 37

L

- Language 12
- Language Support 37
- Laser Pointer 39
- Left Eye 9
- Light/Flashlight 39
- Local Storage 35
- Lock Ring 8
- Login 27
- Login Credentials 28
- Login Screen 25
- Lookup Voice Commands 37
- Low Light 33

M

- Main Unit 9
- Memory 39
- Microphone 5, 7, 8, 8, 37, 39
- MIL-STD 810G 39
- Monocular 39, 39
- Mouse Click 23
- Multiparty Calls 33
- Multiple Languages 23
- Mute Microphone 23
- Muted 37
- My Controls 23
- My Files 35
- MY PROGRAMS 5, 17, 18, 19, 20, 25

N

- Narrow 16, 18
- Natural Language Processing (NLP) 34
- Navigate Back 23
- Navigate Home 16, 23, 25
- Navigator 500 7, 11, 33, 33
- Navigator 500 Components 8
- Navigator 500 Voice Keyboard 26
- Network Connectivity 37
- Noise Cancellation 23, 39
- Notepad 28
- Number of Languages 39

O

- Onsight Application Level 37
- Onsight Connect 5, 10, 15, 15, 25, 32, 35
- Onsight Connect APK 15, 15
- Onsight Cube 5, 35
- Onsight Cube User Guide 35, 35
- Onsight Flow 32
- Onsight Voice Commands 30
- Optical Mode 35
- Overhead Strap 10

P

- Pair 35
- Paired 35
- Participants 33
- Password 29
- PASSWORD 27
- Paste 28
- PC Keyboard & Mouse 25, 26
- Personal Computer 11
- Phone 39
- Playback 23, 34
- Portuguese (Brazilian and Portugal) 37
- Position 9
- Positioning 39
- Power 10, 11
- Power button 7, 8, 8
- Power On 35
- Power ON 10
- Prevent Damage 11
- Protective Eye Wear 10

Q

- QR Code 12
- QR Code Generator 28
- QR Code Login 28
- QR Codes 33
- QR reader 39
- Quick Response 25, 28

R

- Read Serial Numbers 33
- Realwear 5, 16, 17, 18, 19, 20
- Realwear Companion 12
- Realwear Explorer 15, 15, 17, 18, 19, 20, 25, 25, 26
- Realwear HMT 15
- Realwear HMT device 12
- Recent Applications 23
- Recordings 34, 35
- Red 30
- Remember Me 5, 25
- REMEMBER ME 27
- Remote Experts 35
- Removable Head Pad 7, 8
- Removable Head Strap 7, 8
- Request Help 32
- Right Eye 9
- Run 11
- Russian 37

S

Scan Code 29
Screen Resolution 39
Secure Fit 10
Secure Keyboard 26
Select Item # 5, 23
Sensors 39
Session Initiation Protocol (SIP) 30
Set Date & Time 12
Set Language 12
Set Password 25
Set User Name 25
Set User Name and Password 27
SET USERNAME 27
Settings 16
SETTINGS 17, 18, 19, 20
Share Video 35
Sharing 23
Shorter Arm 9
Show Contacts 30, 30
Show Files 30
Show Help 23, 30, 30, 37
Show Info 30
Show Settings 30
Show System Health 30, 30
Show Tool Tips 5, 27, 30, 37
Simple Text Editor, 28
SIP address 30
Smallest Text 10
Spanish 37
Speaker 7, 8
Speakers 39
Speech Recognition 23
Speech/Voice Keyboard 26
Stand-alone Mode 35
Start Recording 30
Start Streaming 30
Status Indicator 33
Stop Recording 30
Stop Streaming 30
Streaming Video 37
Subsequent Logins 25
Swedish 37
System Health 30
System Level 37

T

Take Picture 30
Technicians 35
Telephoto 33
Telestrate Arrow 30
Telestrate Circle 30
Telestrate Rectangle 30
Telestration Colors 30
Thermal Mode 35
Thumbnail Image 35
Thumbs 9
Time 12
To 34
Toggle Mic 30
Toggle Telephoto 30
Toggle Telephoto On/Off 33
Toggle Torch 30
Touchpad/Trackpad 39
Translate from 34
Translator 30, 34
Tri-band Strap 10
Triangle 9

Two Participants 33

U

Undo Telestration 30
Unit of Illumination 33
URL 12
Usability 39
USB 20
USB cable 37
USB Cable 11
USB-C 11
User Credentials 37
Username 29

V

Video 35
Video Resolution 39
View Finder 33
Voice Commands 5, 32, 39

W

Web Browser 12, 12
Weight 39
Wide 16, 18
WiFi-Direct 35
Windows 35
Windows PC 11
Wireless Network 12
Wireless Network Setup 12
Wireless Update 16
WIRELESS UPDATE 19

Z

Z-shape 9
Zone 1 39
Zoom 33
Zoom Controls 35
Zoom Level 1 30
Zoom Level 2 30
Zoom Level 3 30