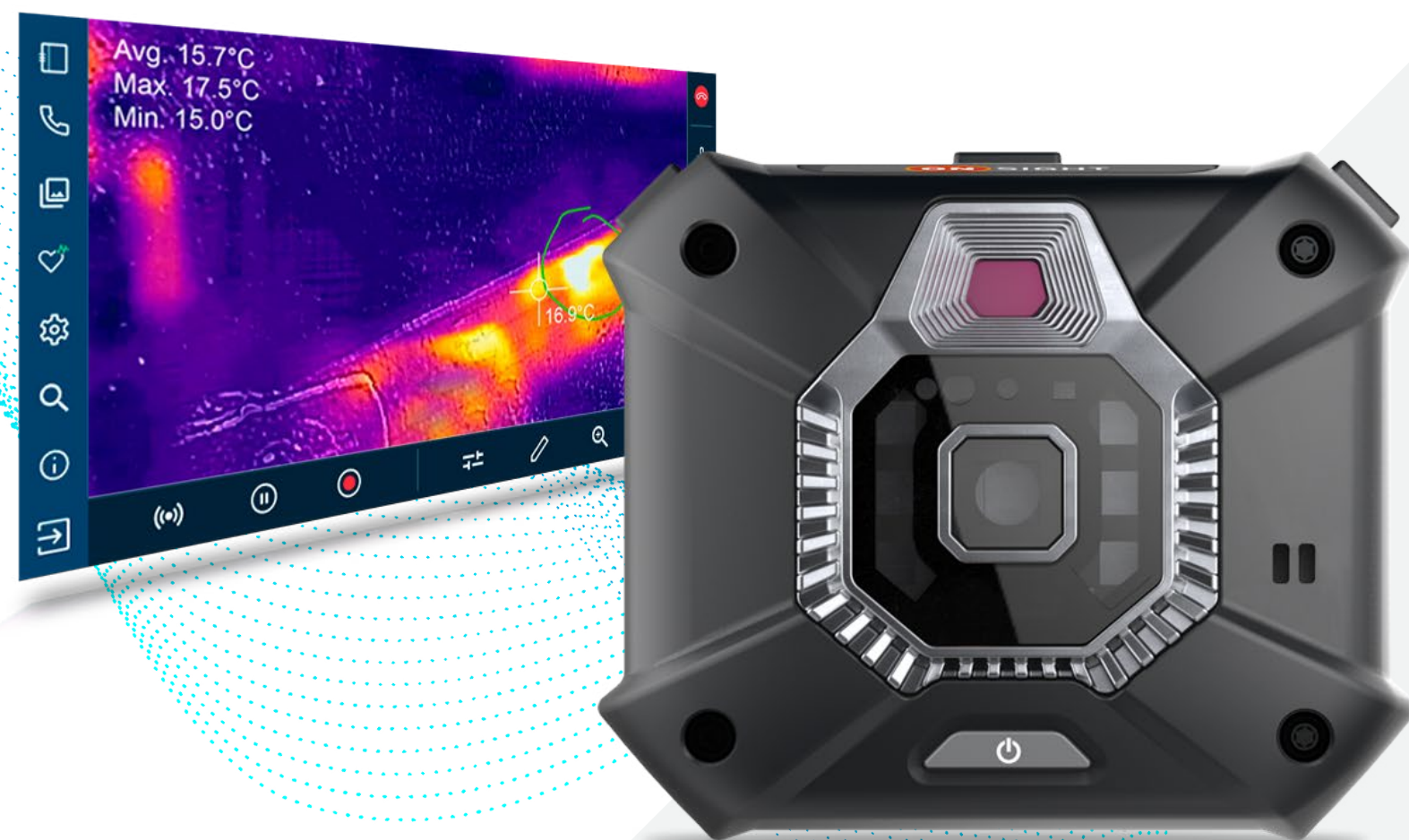




INDUSTRIAL THERMAL WEARABLE



Onsight Cube Key Features

Perform hands-free collaboration and use HD video and thermal imaging in the world's toughest locations with the Onsight Cube. Available in rugged (Cube-R) and ex-certified (Cube-Ex) options, the Onsight Cube is a multi-purpose wearable device designed for safe operation in rugged environments. The Onsight Cube wearable provides a secure solution to capture visuals for self-guided work, add to the knowledge base, or share live content during an Onsight Connect remote expert call.

With dual cameras inside, users can switch between optical, thermal, and fusion camera modes. The laser aiming pointer and built-in light ring provide additional guidance and the ability to illuminate poorly lit environments. The integrated thermal imaging camera provides infrastructure health analysis and trending information while the optical camera provides HD video and images. Fusion mode overlays the optical and thermal imaging cameras for higher definition.

For safe operation in potentially hazardous locations, the Onsight Cube-Ex, has Zone 1 and Class I Div 1 EX certifications. The Cube-Ex is built for non-destructive inspections and with integrated safety features.

MULTI-PURPOSE DESIGN

DUAL CAMERAS

Switch between optical and thermal imaging cameras, or use fusion mode for added details. Capture and share HD video and pictures as well as thermal visuals.

THERMAL BODY MODE

Use thermal body mode to screen for elevated body temperature with a thermal reference heat source. This approach provides an effective first triage step for elevated temperature screening of individuals.

HARDHAT

Mount to a hardhat for secure, hands-free use. Magnetic auto-latch mount provides easy attachment. Clips lock the band in place. Headband accessory also available.

MONOPOD

Attach to a monopod to access hard-to-reach places. Supports a wide range of monopods and other standard tripod mount accessories.

HANDHELD

Hold the Cube-R to perform up-close inspections. While using handheld, the wrist lanyard protects from accidental drop protection.



INDUSTRIAL THERMAL WEARABLE



Onsight Cube-R Specifications

PHYSICAL

- + Flexible wearable design for hardhat and headworn accessories
- + Magnetic auto-latch system for easy mount and dismount
- + Handheld option with safety lanyard
- + 1/4-20 UNC thread tripod for stationary mount

OPTICAL PERFORMANCE

- + 13MP camera
- + 3x digital zoom
- + 10cm to infinity focus range
- + Automatic focus and white balance
- + Integrated LED illumination
- + Class 1 Laser aiming pointer

THERMAL IMAGING CAMERA

- + Longwave infrared, 8-14µm
- + <50mK thermal sensitivity
- + Auto flat field correction (FFC)
- + Typical Measurement Accuracy*:
 - + Greater of +/- 5 C or 5% where scene temperature = -10°C to +120°C Range
 - + Greater of +/- 10 C or 10% where scene temperature = +120°C to +450°C Range
- + Integrated LED illumination
- + Class 1 Laser aiming pointer

AUDIO

- + Built-in omni-directional microphone for ambient sound
- + Built-in speaker for Cube status alerts

VIDEO STANDARD

- + H.264/AVC
- + HD capture and stream up to 1080P resolution
- + Frame rates up to 30fps

COMMUNICATIONS

- + Configure and remotely control the Cube using Onsight Connect in Capture mode or with a Connect Enterprise license on an iOS 12, Android 6.0 or higher mobile device
- + For live remote expert assistance, a Connect Enterprise license is required
- + Integrated IEEE 802.11 a/b/g/n
- + Dual Band WiFi (2.4GHz and 5GHz)
- + Bluetooth 4.1 (LE) for pairing to host device
- + Haptic feedback
- + Direct Wifi connection to the host phone

MEDIA CAPTURE & STORAGE

- + 48GB onboard storage
- + USB cable for file transfer
- + Date and time stamping of all media
- + Cube media tagged with location data from host device if enabled

RUGGED DESIGN

- + 6 foot drop to concrete at 20°C
- + 75 mm wide x 64 mm high x 50 mm deep
- + IP64 enclosure rating
- + MIL-STD-810G (or 202G) Salt atmosphere
- + ANSI/ASAE EP455 exposure rating

SECURITY

- + WLAN network authentication: WPA, WPA2, WPA-PSK,
- + WPA2-PSK, open
- + WLAN Data Encryption: AES, WEP, TKIP, or Disabled
- + 802.1x Authentication: PEAP
- + AES-256 Media Encryption for file storage

SAFETY

- + Canada - CSA-C22.2 62368-1
- + USA - UL 62368-1
- + EU - EN 62368-1

EMC

- + Industry Canada ICES-003 Class B
- + FCC, CFR47, Part 15, Subpart B-Class B
- + EN 55032 Class B
- + ETSI EN 301 489
- + IEC 61000-3-2
- + IEC 61000-3-3

POWER

- + Rechargeable 2200 mA·h Li-Ion battery
- + 5VDC, 1.8A AC Adapter
- + Charging from any standard USB port
- + Magnetic charging connector
- + Up to over 4 hours of runtime, depending on media and illumination settings

RF EXPOSURE (SAR)

- + IEEE C95.1
- + Industry Canada RSS-102
- + FCC OET Bulletin 65 (supplement C)
- + EN 50566

RADIO COMPLIANCE

- + Industry Canada RSS-210
- + FCC Part 15, Sub-part C, Sub-part E
- + ETSI EN 301 893
- + ETSI EN 300 328

* Depends on usage and environmental conditions
** Certification pending

HUMIDITY (NON-CONDENSING)

- + Short term storage (up to 3 months) minimum 5%, maximum 85%
- + Operating minimum 5%, maximum 95%RH

ALTITUDE

- + Storage (12°C) minimum 0 ft, maximum 15,000 ft
- + Operating (27°C) minimum 0 ft, maximum 10,000 ft

STORAGE TEMPERATURE

- + -30°C to +60°C
- + Storage greater than 3 months maximum +45°C

OPERATING AMBIENT TEMPERATURE

- + Optical camera: -20°C to +55°C
- + Thermal Imaging: -10°C to +55°C

ACCESSORY KIT

- + Hard Carrying Case
- + Hardhat Mount
- + Climbing Helmet Mount
- + Headband / Strap
- + Monopod





INDUSTRIAL THERMAL WEARABLE



Onsight Cube-Ex Specifications

PHYSICAL

- + Flexible wearable design for hardhat and climbing helmet accessories
- + Magnetic auto-latch system for easy mount and dismount
- + Handheld option with safety lanyard
- + 1/4-20 UNC thread tripod for stationary mount

OPTICAL PERFORMANCE

- + 13MP camera
- + 3x digital zoom
- + 10cm to infinity focus range
- + Automatic focus and white balance
- + Integrated LED illumination
- + Class 1 Laser aiming pointer

THERMAL IMAGING CAMERA

- + Longwave infrared, 8-14µm
- + <50mK thermal sensitivity
- + Auto flat field correction (FFC)
- + Typical Measurement Accuracy*:
 - + Greater of +/- 5 C or 5% where scene temperature = -10°C to +120°C Range
 - + Greater of +/- 10 C or 10% where scene temperature = +120°C to +450°C Range
- + Integrated LED illumination
- + Class 1 Laser aiming pointer

AUDIO

- + Built-in omni-directional microphone for ambient sound
- + Built-in speaker for Cube status alerts

VIDEO STANDARD

- + H.264/AVC
- + HD capture and stream up to 1080P resolution
- + Frame rates up to 30fps

COMMUNICATIONS

- + Configure and remotely control the Cube using Onsight Connect in Capture mode or with a Connect Enterprise license on an iOS 12, Android 6.0 or higher mobile device
- + For live remote expert assistance, a Connect Enterprise license is required
- + Integrated IEEE 802.11 a/b/g/n
- + Dual Band WiFi (2.4GHz and 5GHz)
- + Bluetooth 4.1 (LE) for pairing to host device
- + Haptic feedback
- + Direct Wifi connection to the host phone

MEDIA CAPTURE & STORAGE

- + 48GB onboard storage
- + USB cable for file transfer
- + Date and time stamping of all media
- + Cube media tagged with location data from host device if enabled

RUGGED DESIGN

- + 6 foot drop to concrete at 20°C
- + 75 mm wide x 64 mm high x 50 mm deep
- + IP64 enclosure rating
- + MIL-STD-810G (or 202G) Salt atmosphere
- + ANSI/ASAE EP455 exposure rating

HAZARDOUS ENVIRONMENT

- + Zone 1 and Zone 21
- + Class I Div 1, Class II Div 1
- + IECEx, ATEX, NEC/CEC, InMetro, UKEX** Approvals
- + Temperature Rating T4, Ta = -20 to +55C

SECURITY

- + WLAN network authentication: WPA, WPA2, WPA-PSK,
- + WPA2-PSK, open
- + WLAN Data Encryption: AES, WEP, TKIP, or Disabled
- + 802.1x Authentication: PEAP
- + AES-256 Media Encryption for file storage

SAFETY

- + Canada - CSA-C22.2 62368-1
- + USA - UL 62368-1
- + EU - EN 62368-1

EMC

- + Industry Canada ICES-003 Class B
- + FCC, CFR47, Part 15, Subpart B-Class B
- + EN 55032 Class B
- + ETSI EN 301 489
- + IEC 61000-3-2
- + IEC 61000-3-3

POWER

- + Rechargeable 2200 mA·h Li-Ion battery
- + 5VDC, 1.8A AC Adapter
- + Charging from any standard USB port
- + Magnetic charging connector
- + Up to over 4 hours of runtime, depending on media and illumination settings

RF EXPOSURE (SAR)

- + IEEE C95.1
- + Industry Canada RSS-102
- + FCC OET Bulletin 65 (supplement C)
- + EN 50566

RADIO COMPLIANCE

- + Industry Canada RSS-210
- + FCC Part 15, Sub-part C, Sub-part E
- + ETSI EN 301 893
- + ETSI EN 300 328

* Depends on usage and environmental conditions
** UKEX Certification pending

HUMIDITY (NON-CONDENSING)

- + Short term storage (up to 3 months) minimum 5%, maximum 85%
- + Operating minimum 5%, maximum 95%RH

ALTITUDE

- + Storage (12°C) minimum 0 ft, maximum 15,000 ft
- + Operating (27°C) minimum 0 ft, maximum 10,000 ft

STORAGE TEMPERATURE

- + -30°C to +60°C
- + Storage greater than 3 months maximum +45°C

OPERATING AMBIENT TEMPERATURE

- + Optical camera: -20°C to +55°C
- + Thermal Imaging: -10°C to +55°C

ACCESSORY KIT

- + Hard Carrying Case
- + Hardhat Mount
- + Climbing Helmet Mount
- + Monopod

