

# RUGGED INDUSTRIAL WEARABLE CAMERA.

Designed for safe operation in rugged environments, the Onsight Cube-R industrial wearable brings hands-free collaboration and thermal imaging to the world's toughest locations.

Whether your teams need to see and capture visuals for self-guided work, add to the knowledge base, or share live content during remote collaboration sessions, the Cube-R wearable provides a secure and safe solution.

Its multi-purpose design allows for hands-free, handheld, and monopod use to capture visuals in hard to reach places. The magnetic auto-latch mount provides an easy and secure way to attach the Cube-R to hardhat and headband accessories.

Pair the Cube-R to an Onsight Connect enabled mobile device and immediately control the camera from afar. Adjust lighting, zoom, or take pictures and thermal images to gain access to critical visuals. Capture

and securely store images or recordings on the Cube-R directly, upload to Onsight Workspace, or share content in live Onsight Connect remote expert sessions.

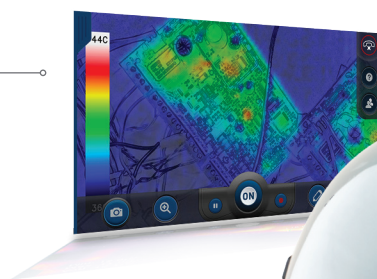
With dual cameras inside, switch between optical, thermal, and fusion camera modes. The integrated thermal imaging camera provides infrastructure health analysis and trending information while the optical camera provides HD video and images.

Fusion mode overlays the optical and thermal imaging cameras for higher definition. The integrated light ring and laser aiming pointer ensure high quality visuals.

The Cube-R combines the power of the Onsight Augmented Reality Service Platform with a compact camera for improved worker safety and an optimized hands-free remote expert experience.

## DUAL CAMERAS

HD optics and thermal imaging for complete asset analysis.



## ILLUMINATION

Illuminate low lit areas with powerful built-in light ring and guide users with the laser aiming pointer.



## MULTI-USE DESIGN

Mount to a helmet or headband for hands-free, attach a monopod, or use handheld for hard to reach areas.

## CAPTURE CONTENT

Record video and store pictures on the Cube or using an Onsight Cube enabled device.

## RUGGED

Rugged design for safe operation in industrial environments.

# MULTI-USE CAMERA.



## **HARDHAT**

Mount to a hard hat for hands-free use.

## **MONOPOD**

Attach to monopod for hard-to-reach areas.

## **HANDHELD**

Hold the device for up-close inspections.

## DESIGNED WITH **SAFETY IN MIND**

The Cube-R is built for industrial worker with integrated safety features. The body of the Cube-R includes a dual attachment mounting system. This mounting system securely attaches to hardhats with an over-the-helmet attachment and lanyard clip for dual connection. While using handheld, the wrist lanyard protects from accidental drop protection.

# ONSIGHT CUBE-R TECHNICAL SPECIFICATIONS

## PHYSICAL

- Flexible wearable design for hardhat and headworn accessories
- Magnetic auto-latch system for easy mount and dismount
- Handheld option with safety lanyard
- 1/4-20 UNC thread tripod for stationary mount

## OPTICAL PERFORMANCE

- 13MP camera
- 3x digital zoom
- 10cm to infinity focus range
- Automatic focus and white balance
- Integrated LED illumination
- Class 1 Laser aiming pointer

## THERMAL IMAGING CAMERA

- Longwave infrared, 8-14µm
- <50mK thermal sensitivity
- Auto Flat Field Correction (FFC)
- Typical Measurement Accuracy\*:  
Greater of +/- 5 C or 5% where scene temperature = -10 °C to +120 °C Range  
Greater of +/- 10 C or 10% where scene temperature = +120 °C to +450 °C Range

## AUDIO

- Built-in omni-directional microphone for ambient sound
- Built-in speaker for Cube status alerts

## VIDEO STANDARD

- H.264/AVC
- HD capture and stream up to 1080P resolution
- Frame rates up to 30fps

## COMMUNICATIONS

- Configure and remotely control the Cube using Onsight Connect in Capture mode or with a Connect Enterprise license on an iOS 11, Android 5.0 (Lollipop) or higher mobile device.
- For live remote expert assistance, a Connect Enterprise license is required.
- Integrated IEEE 802.11 a/b/g/n
- Dual Band WiFi (2.4GHz and 5GHz)
- Bluetooth 4.1 (LE) for pairing to host device
- Haptic feedback
- Direct Wifi connection to the host phone

## MEDIA CAPTURE & STORAGE

- 48GB onboard storage
- USB cable for file transfer
- Date and time stamping of all media
- Cube media tagged with location data from host device if enabled

## SECURITY

- WLAN network authentication: WPA, WPA2, WPA-PSK, WPA2-PSK, open
- WLAN Data Encryption: AES, WEP, TKIP, or Disabled
- 802.1x Authentication: PEAP
- AES-256 Media Encryption for file storage

## RUGGED DESIGN

- 6 foot drop to concrete at 20 °C
- 75 mm wide x 64 mm high x 50 mm deep
- IP64 enclosure rating
- MIL-STD-810G (or 202G) Salt atmosphere
- ANSI/ASAE EP455 exposure rating

## EMC

- Industry Canada ICES-003 Class B
- FCC, CFR47, Part 15, Subpart B--Class B
- EN 55032 Class B
- ETSI EN 301 489
- IEC 61000-3-2
- IEC 61000-3-3

## RF EXPOSURE (SAR)

- IEEE C95.1
- Industry Canada RSS-102
- FCC OET Bulletin 65 (supplement C)
- EN 50566

## ACCESSORY KIT

- Hard Carrying Case
- Hardhat Mount
- Climbing Helmet Mount
- Headband / Strap
- Monopod

## RADIO COMPLIANCE

- Industry Canada RSS-210
- FCC Part 15, Sub-part C, Sub-part E
- ETSI EN 301 893
- ETSI EN 300 328

## SAFETY

- Canada - CSA-C22.2 62368-1
- USA - UL 62368-1
- EU - EN 62368-1

## OPERATING AMBIENT TEMPERATURE

- Optical camera: -20 °C to +55 °C
- Thermal Imaging: -10 °C to +55 °C

## STORAGE TEMPERATURE

- 30 °C to +60 °C
- Storage greater than 3 months maximum +45 °C

## HUMIDITY (NON-CONDENSING)

- Short term storage (up to 3 months) minimum 5%, maximum 85%
- Operating minimum 5%, maximum 95%RH

## ALTITUDE

- Storage (12 °C) minimum 0 ft, maximum 15,000 ft
- Operating (27 °C) minimum 0 ft, maximum 10,000 ft

## POWER

- Rechargeable 2200 mAh Li-Ion battery
- 5VDC, 1.8A AC Adapter
- Charging from any standard USB port
- Magnetic charging connector
- Up to over 4 hours of runtime, depending on media and illumination settings



\* Depends on usage and environments conditions