

# ONSIGHT HOW TO:

## USING ONSIGHT CONNECT IN MICROSOFT TEAMS

Onsight Connect can be launched independently from your Windows computer or launched with Microsoft Teams.

**NOTE:** You should have previously gone through the onboarding process of training and have an Onsight Connect account, and installed Onsight Connect on your device before going through the steps in this document.

Onsight Connect for Microsoft Teams is available to Onsight Enterprise users. To purchase Onsight, please contact us at [info@librestream.com](mailto:info@librestream.com). If you are a current Onsight user and would like to upgrade to an Enterprise license, please contact your Librestream Account Manager.

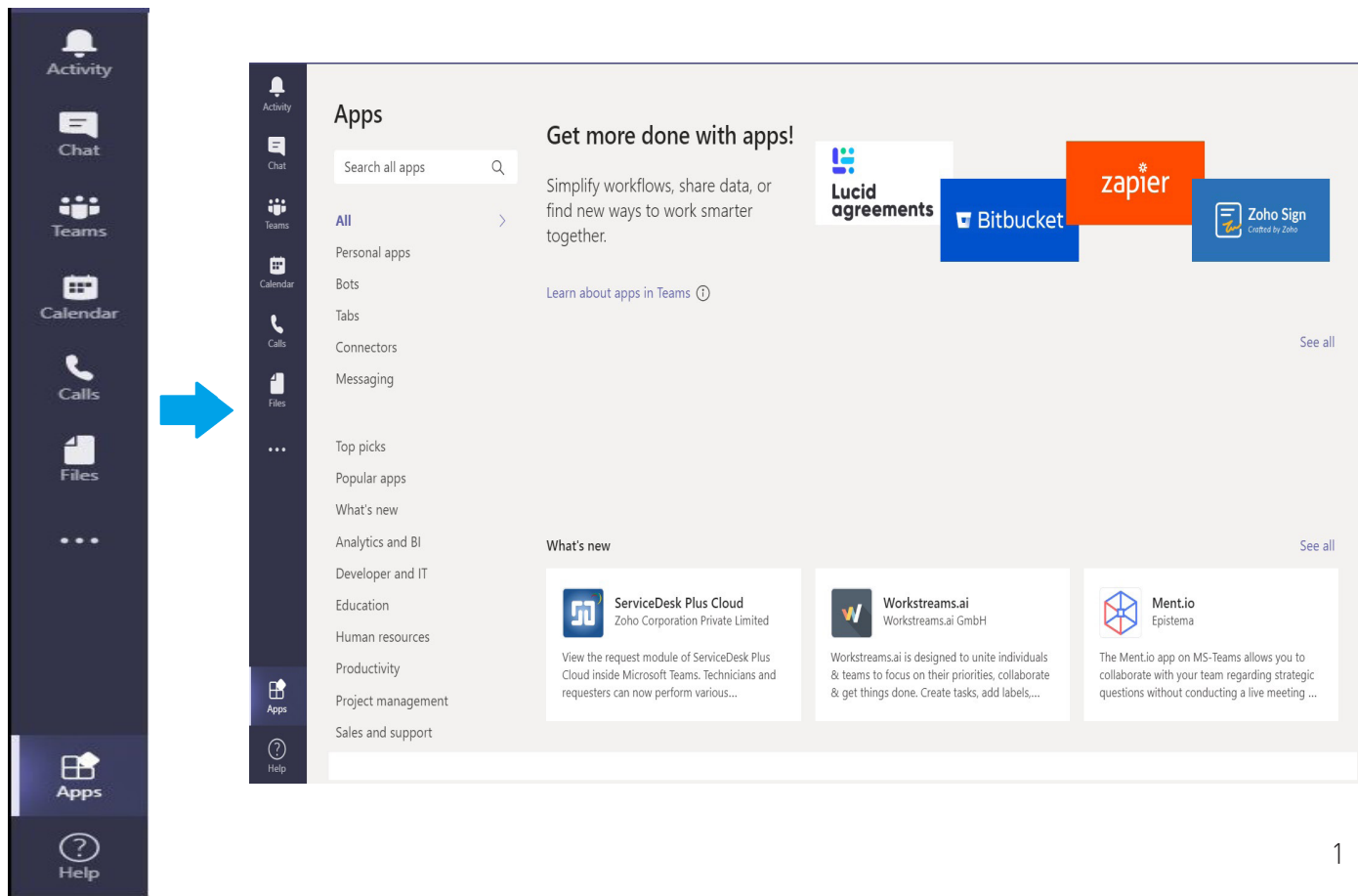
This document will refer to **Microsoft Teams** simply as **Teams**.

### STEP 1 - START MICROSOFT TEAMS

Open and log in (if necessary) to Teams using your Microsoft credentials.


### STEP 2 - NAVIGATE TO APPS

Once Teams is open, click **Apps** located at the bottom-left of Teams then enter **Onsight Connect** in the **Search** box.



## STEP 3 - INSTALLING THE ONSIGHT CONNECT TEAMS APP

Click the **Onsight Connect** icon app, and then click **Add**.



**Add**

**About**  
Permissions

**Make calls using Onsight Connect (Enterprise Accounts)**  
Use Onsight Connect (Enterprise Accounts) to make calls with your Teams client app

**Bots**  
Chat with the app to ask questions and find info

**Messages**  
Insert content from the app directly into messages

**Personal app**  
Keep track of important content and info

Created by: [Librestream](#)  
Version 1.0.7  
Supported Languages:  

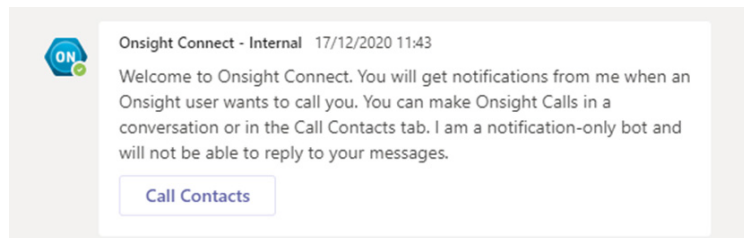
- English (United States)
- Español

**Permissions**  
This app will have permission to:  

- Receive messages and data that I provide to it.
- Send me messages and notifications.



Once the Onsight Connect app is installed, a welcome message will appear on the screen.



**Onsight Connect - Internal** 17/12/2020 11:43

Welcome to Onsight Connect. You will get notifications from me when an Onsight user wants to call you. You can make Onsight Calls in a conversation or in the Call Contacts tab. I am a notification-only bot and will not be able to reply to your messages.

[Call Contacts](#)

Right click on the Onsight Connect Icon and select **Pin** to pin the app to the **Dashboard**. This will make it easier to locate Onsight Connect.



Left screenshot: Teams sidebar showing 'Calls', 'Files', and 'Onsight Co...' with a red arrow pointing to the 'Onsight Co...' icon.

Right screenshot: Context menu for 'Onsight Co...' showing options: 'Pop out app', 'About', 'Pin', 'Block', and 'Uninstall'. A red arrow points to the 'Pin' option.

## STEP 4 - FIRST TIME LOGIN

Click **Call Contacts** followed by **Call Contacts** from the welcome screen.

Click **Continue**.

Enter your OnSight Connect **Username** and **Password** and then click **Test Connection** to connect Teams to OnSight.

## STEP 4 - FIRST TIME LOGIN (CONTINUED)

Now Teams and Onsight are connected, click **Test Connection to Onsight Connect** to open and log in to Onsight Connect.

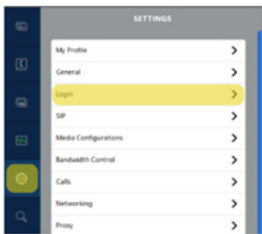


### Welcome to Onsight Connect for Microsoft Teams!

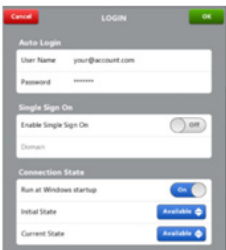
You are now connected to Onsight Connect for Teams. You can now start Onsight calls from Microsoft Teams.

Once you have logged into Onsight Connect add your username and password to autologin by selecting 'Remember me' on the login screen or go to Settings > Login.

1 Go to Onsight Connect and open Settings > Login

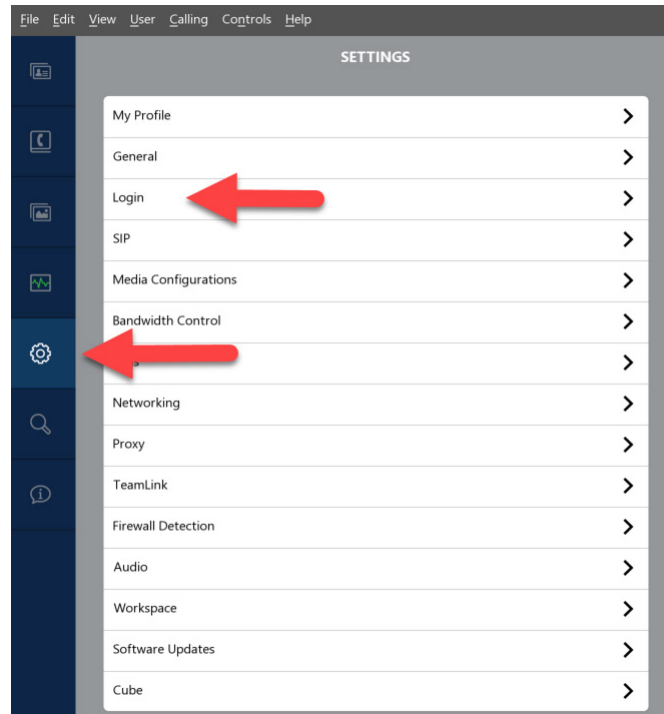


2 Enter your credentials and click OK

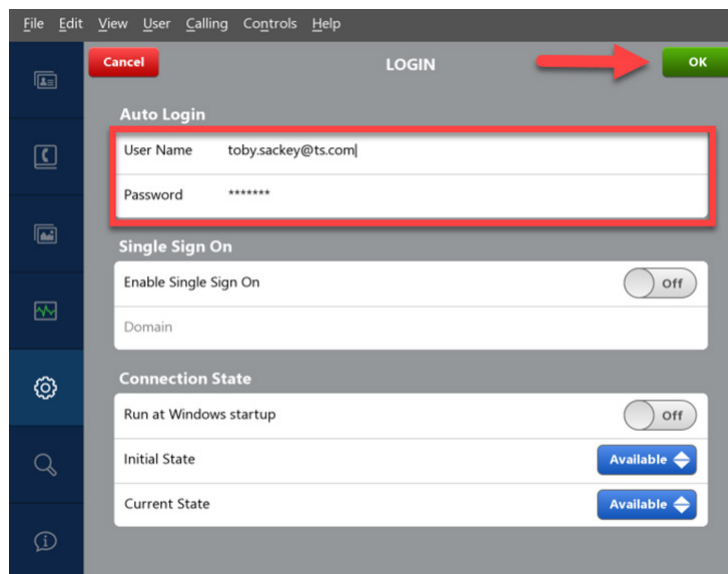


## STEP 4 - FIRST TIME LOGIN (CONTINUED)

To enable auto login for Onsight Connect, click on **Settings** on the Dashboard followed by **Login**.



Make sure your **Username** and **Password** are entered and then click **OK**.

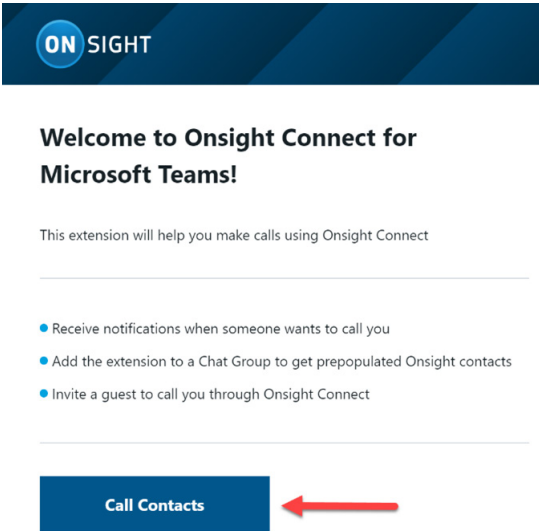
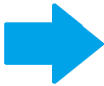
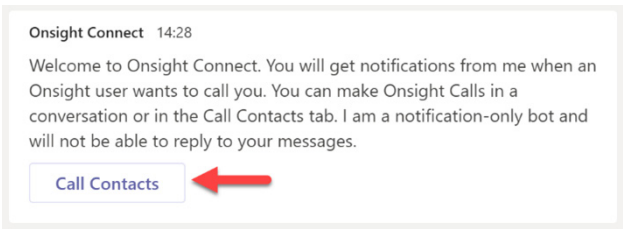


## STEP 5 - STARTING AN ONSIGHT CALL

Navigate back to the Microsoft Teams and click on the Onsite Connect Icon.

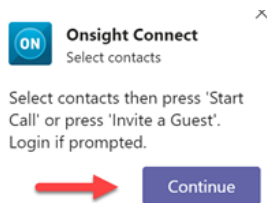


Click **Call Contacts** and then click the **Call Contacts** button at the bottom.

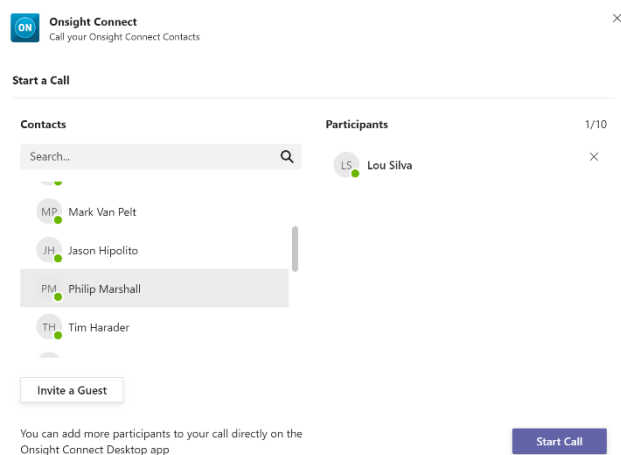
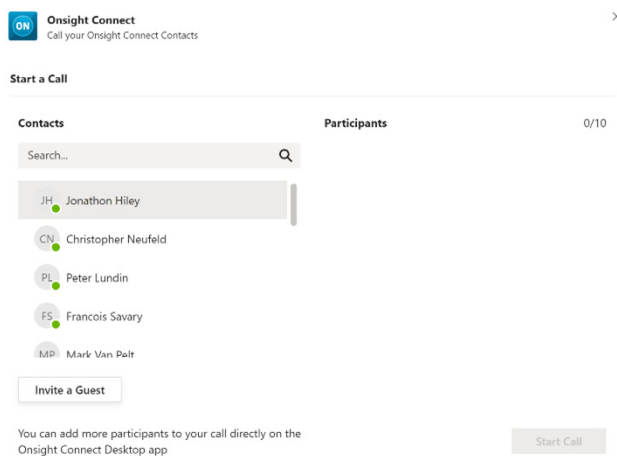


## STEP 5 - STARTING AN ONSIGHT CALL (CONTINUED)

Click **Continue**.



Click to select a Contact then press **Start Call** or press **Invite a Guest** to invite a guest. Login if prompted



Click **Start Call** to launch Onsite Connect. Once logged in, Onsite Connect will automatically call the Contact your selected.



<http://librestream.com/onsight-support/>

<http://librestream.com/training-deployment-adoption-materials/>