

A long-exposure photograph of a multi-lane highway at night, showing light trails from vehicles and streetlights. The image is dark blue and serves as a background for the text.

LIBRESTREAM

**ADMIN INSTRUCTIONS
SETUP VUZIX DEVICE FOR USE WITH ONSIGHT CONNECT**

PERFORM THE FOLLOWING STEPS

Step 1 – Download, Install and Run Vuzix View

Step 2 – Connect the Vuzix Device to Your PC/MAC

Step 3 – The Vuzix Home Screen

Step 4 – Enabling USB debugging

Step 5 – Download & Install Onsite Connect

Step 6 – Connecting the Vuzix device to Wi-Fi

Step 7 – Log on to Onsite Connect using a QR Code

Appendix – Creating a QR Code

Appendix – Vuzix Support and FAQs Links

BEFORE STARTING

1. Make certain your Vuzix device is fully charged. Can take up to 2 hours to fully charge the battery.
2. Check with your IT Department to make sure you are allowed to download and install software on your computer. Otherwise, you will need someone with the proper rights/permissions to assist you with the download and installation.

STEP 1 – DOWNLOAD, INSTALL AND RUN VUZIX VIEW

1. On your PC/MAC go to:

<https://www.vuzix.com/pages/vuzix-view-software>

then click Software (under Browse by Category) and download the applicable software for your computer.

Vuzix View - Windows

Version 2.0

Vuzix View - MacOS

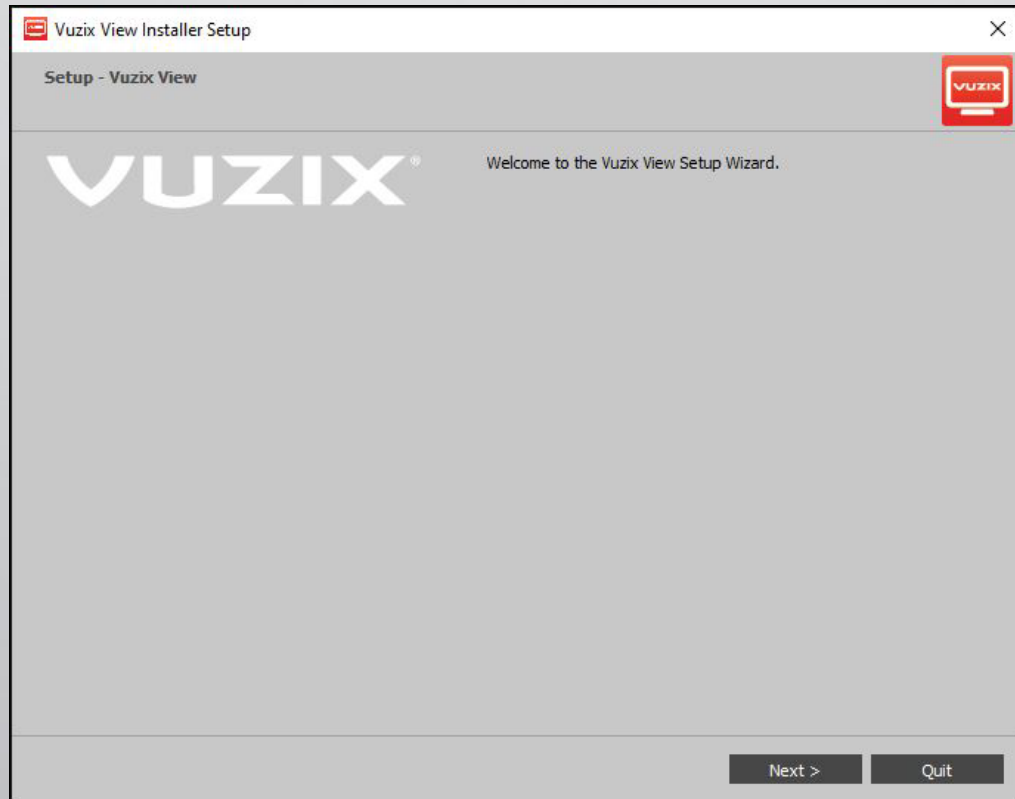
Version 2.0

2. Once downloaded, double-click the application to install.

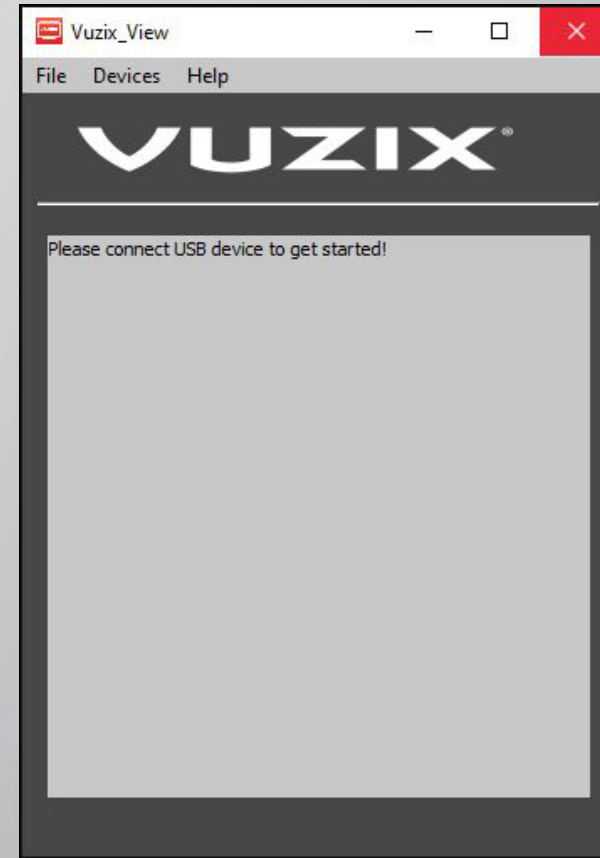


STEP 1 – DOWNLOAD, INSTALL AND RUN VUZIX VIEW

3. Click **Next** and follow the prompts to install.

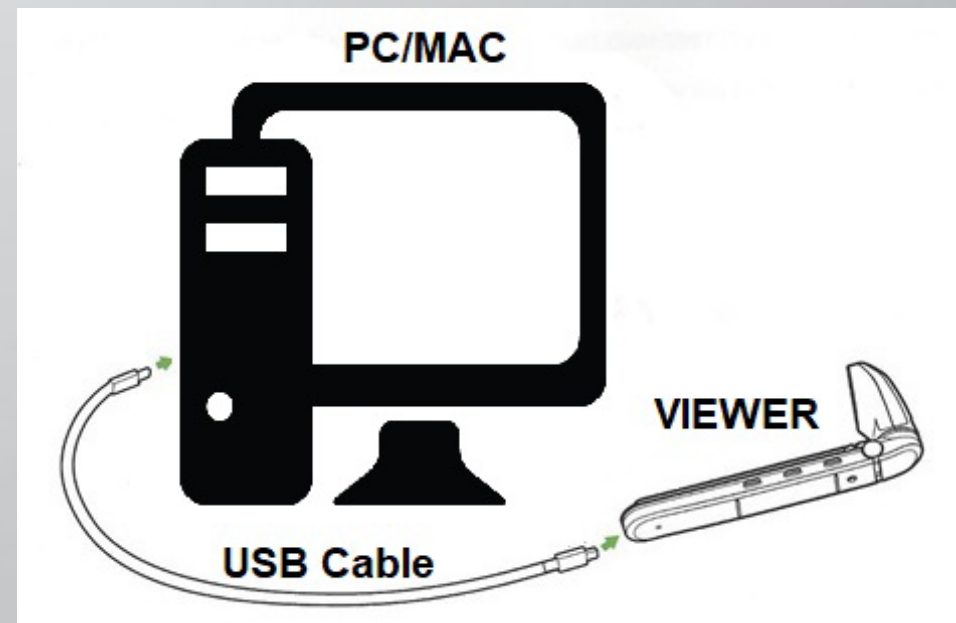
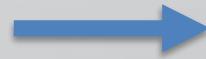
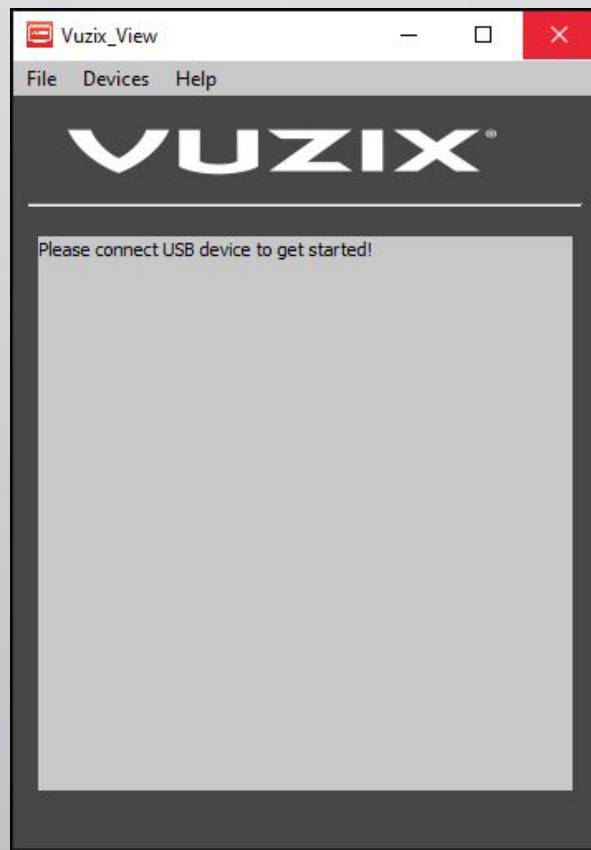


4. Once installed, open/run **Vuzix View**.



STEP 2 – CONNECT THE VUZIX DEVICE TO YOUR PC/MAC

Once Vuzix View is opened, connect the device to your PC/MAC using the provided USB cable.



Make certain you connect from the Viewer, not the battery.

Vuzix View will then attempt to detect the connected Vuzix device.

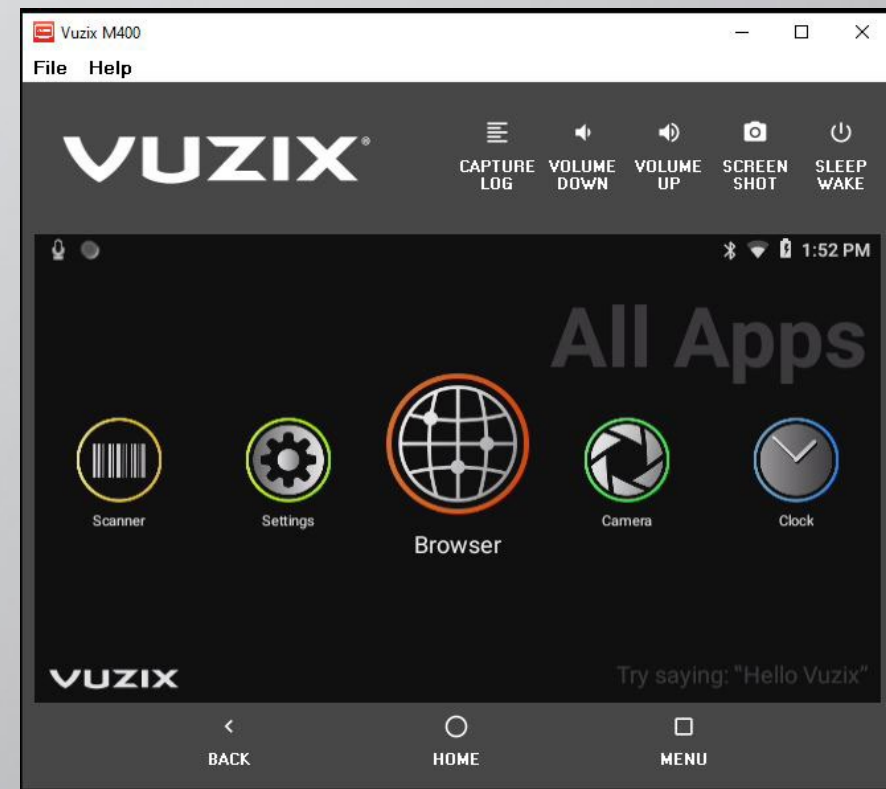
STEP 3 – THE VUZIX APP DASHBOARD

Once the Vuzix device is detected, the Vuzix View will display the device type and serial number.

Click **VIEW**.



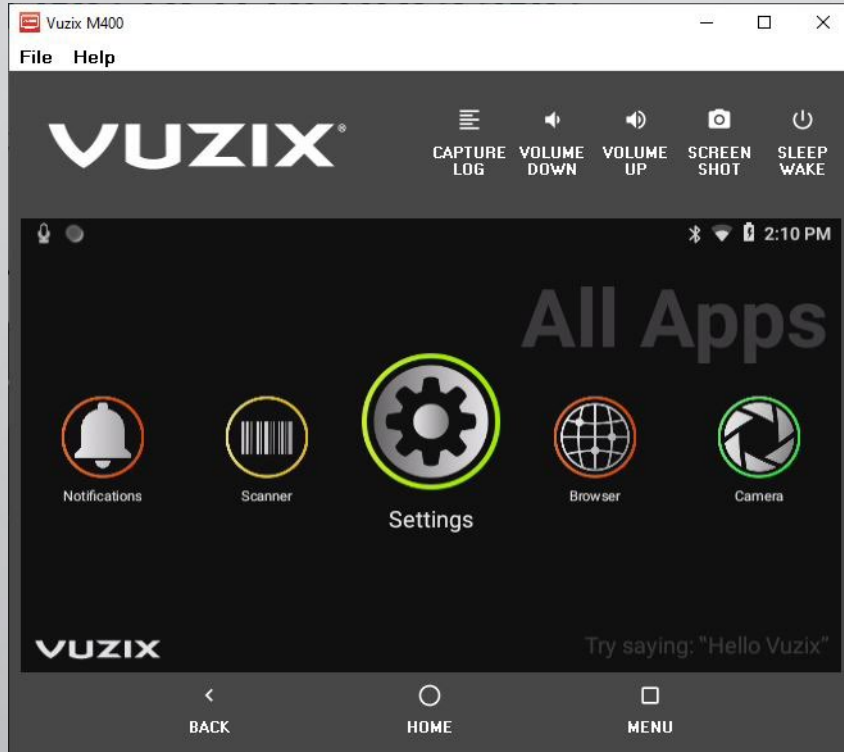
The Vuzix Home Screen displays.



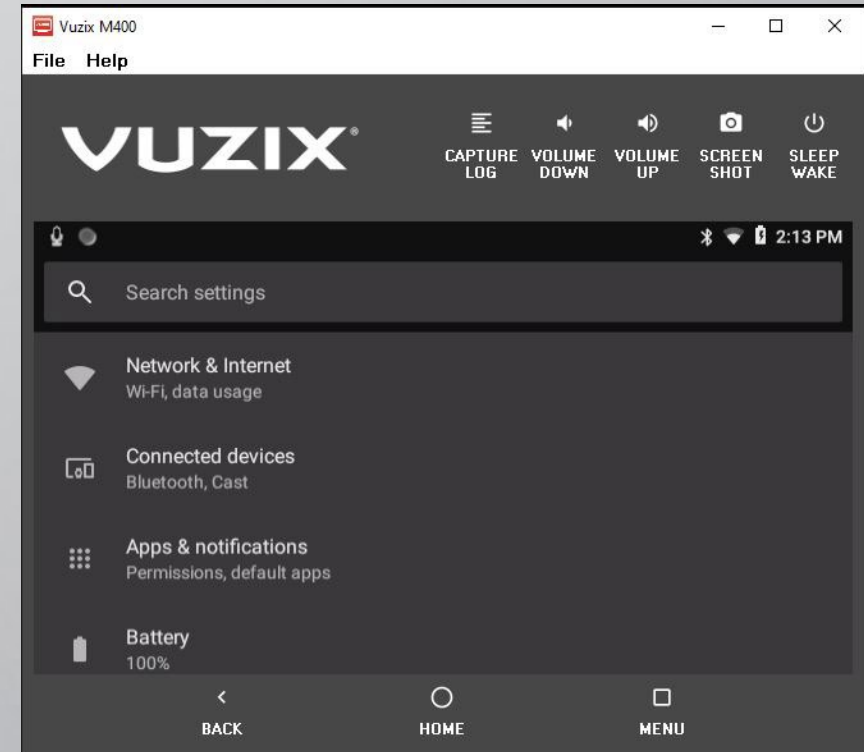
STEP 4 – ENABLING USB DEBUGGING

USB debugging on the Vuzix device is required to allow it to communicate with your Windows PC.

Using your mouse or arrow keys on your PC keyboard, scroll across the Home screen and press the **Enter** key for **Settings**.

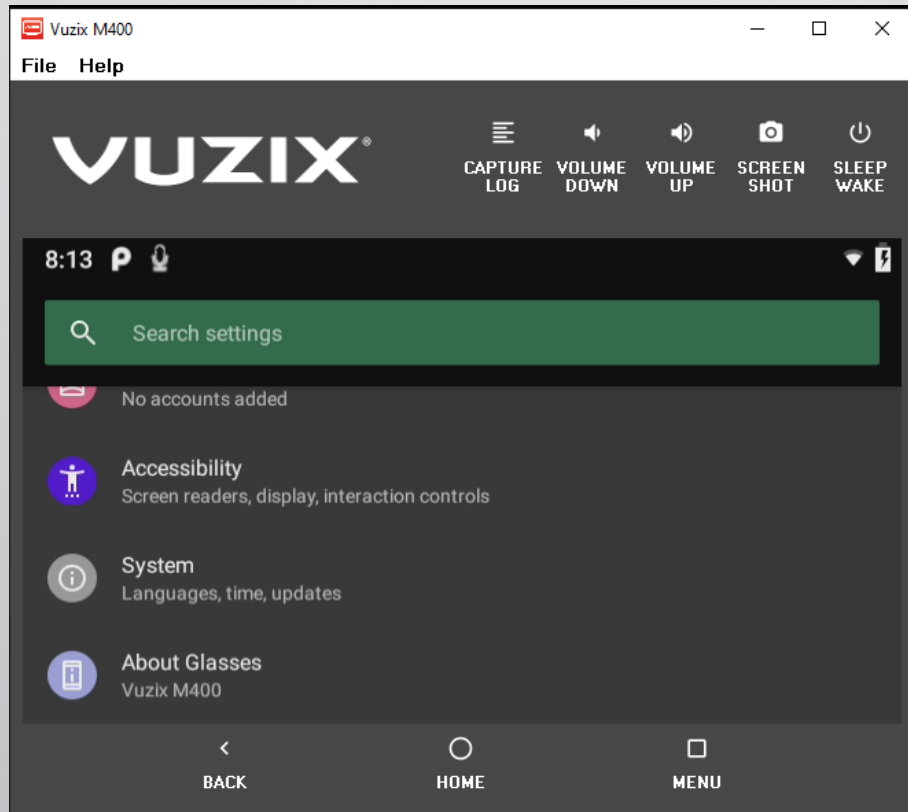


Settings

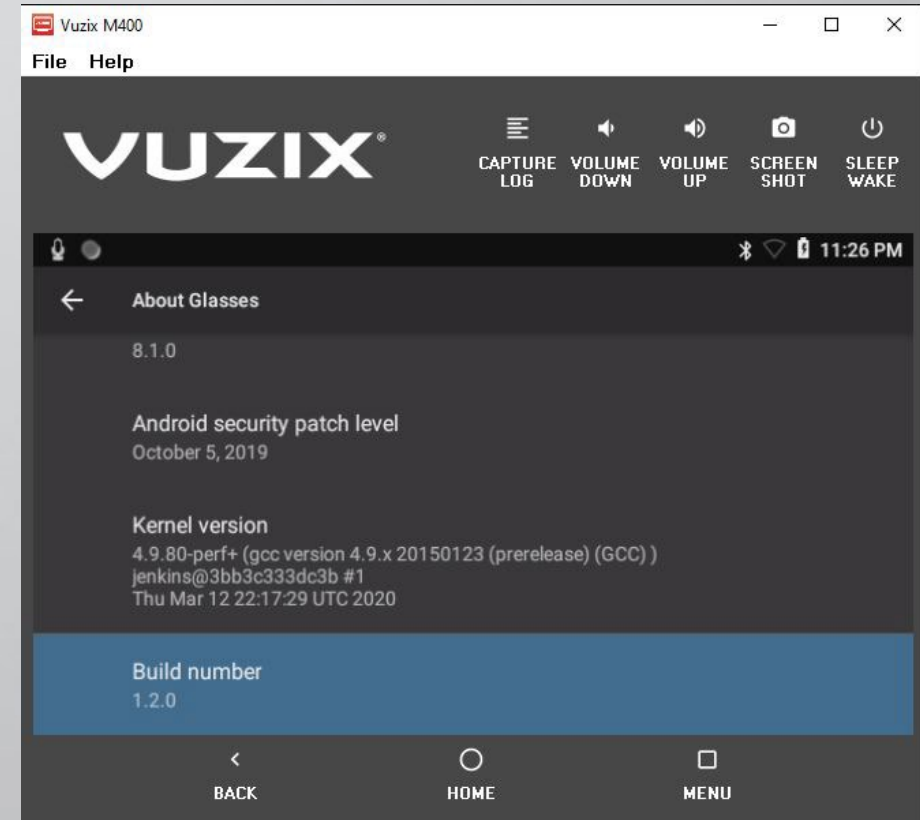


STEP 4 – ENABLING USB DEBUGGING (CONT.)

Scroll down to the bottom and select **About Glasses**.



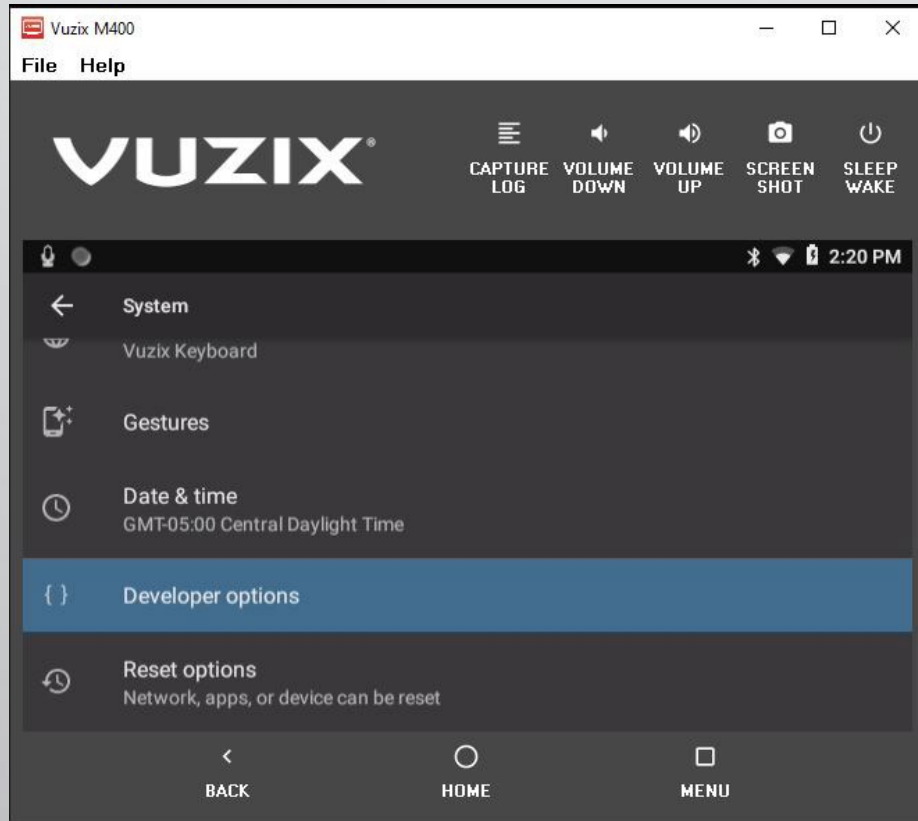
Scroll to the bottom and click the **Build number** Seven (7) times.



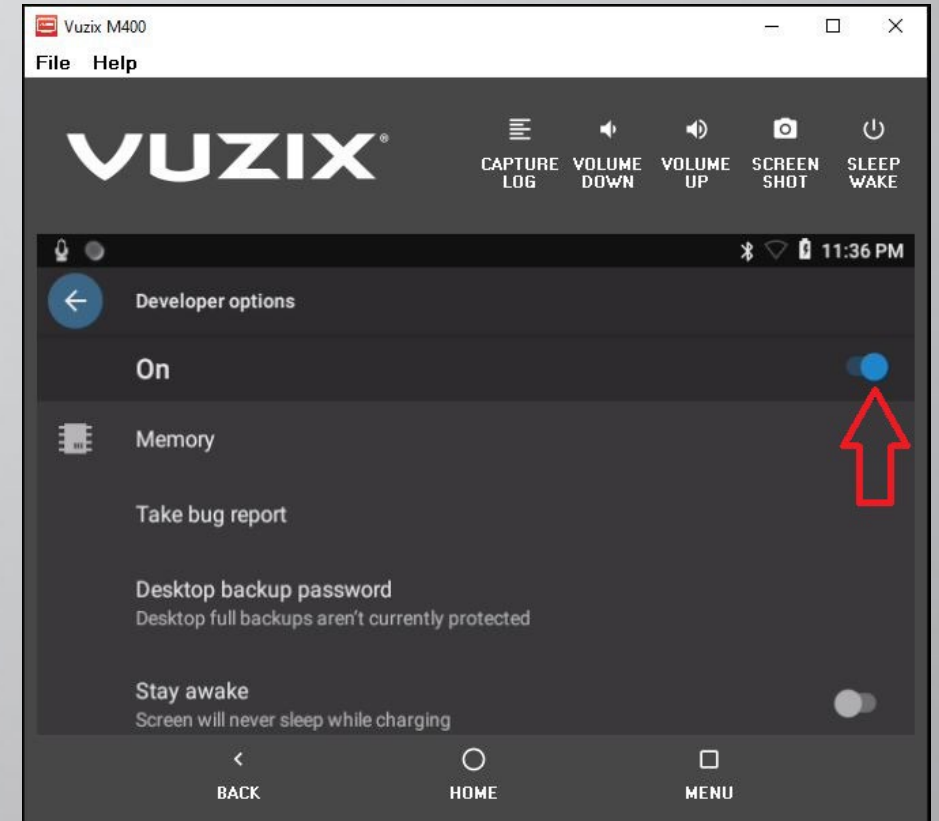
After the 7th click, a message will display stating that you are set as a Developer.

STEP 4 – ENABLING USB DEBUGGING (CONT.)

Return to **Settings > System**; you should now see and click **Developer options**.

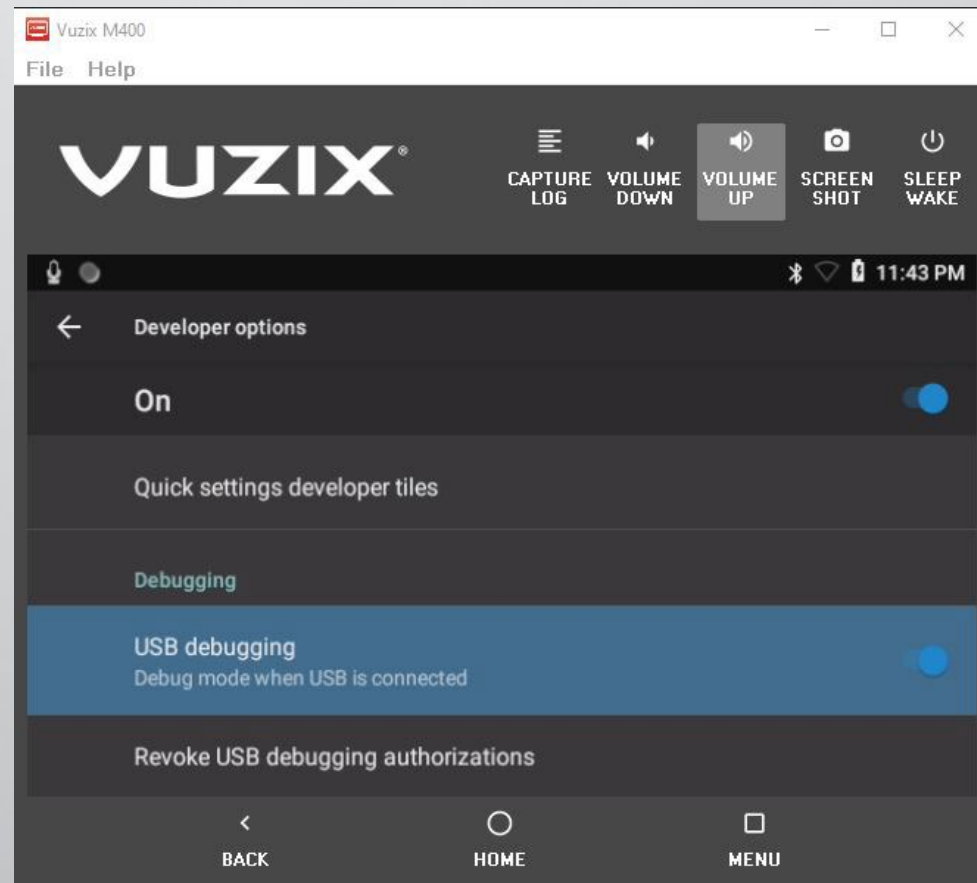


Enable **Developer options**.



STEP 4 – ENABLING USB DEBUGGING (CONT.)

While still in **Developer options**, scroll down and enable **USB debugging**.



Click the **HOME** button to return to the Home Screen.

STEP 5 – DOWNLOAD & INSTALL ONSIGHT CONNECT

Download the Onsite Connect APK file at:

<https://librestream.com/onsight-support/>

The current APK file will display as **v11.4.X**



Vuzix M400/M4000 v11.4.8(18884)

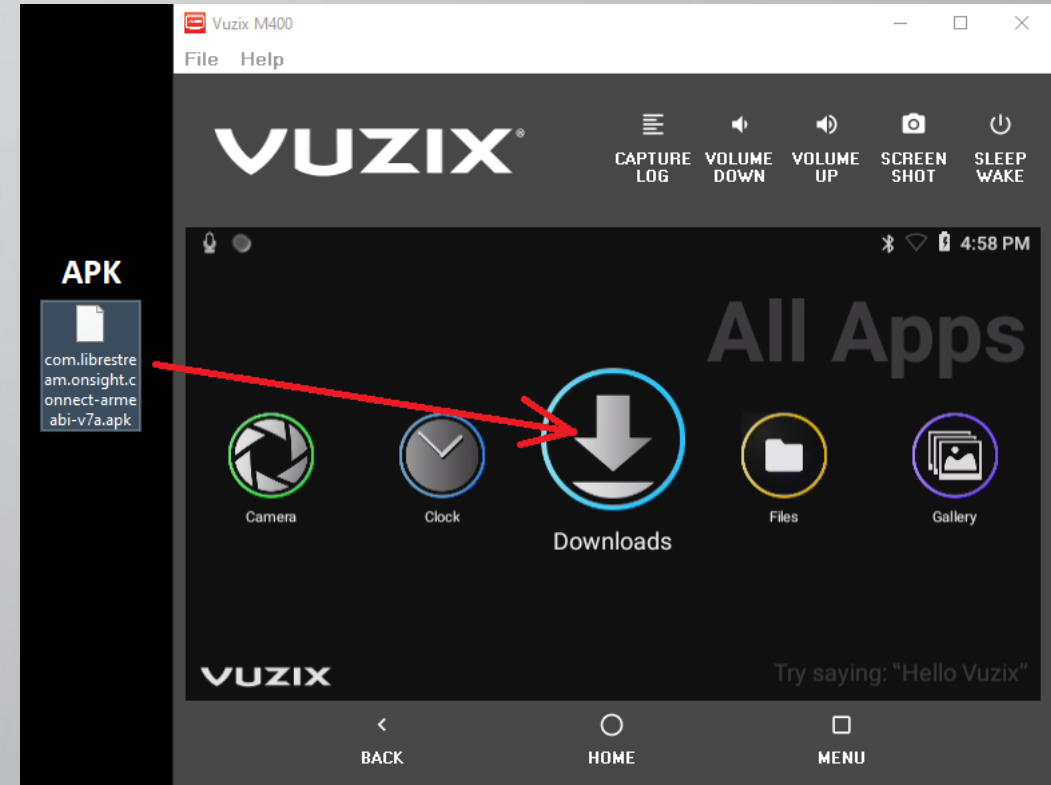
DOWNLOADS AND UPDATES

[Download the latest M400/M4000 APK \(Minimum OS v1.1.4 required\) \(Link\)](#)

[Software Requirements \(Modal\)](#)

MANUALS AND GUIDES

1. Download the latest file to your Desktop.
2. From the Vuzix Home Screen, scroll horizontally until you position the **Downloads** app in the center.
3. **Drag and drop** the APK file on to **Downloads**.



Vuzix M400

File Help

VUZIX

CAPTURE LOG VOLUME DOWN VOLUME UP SCREEN SHOT SLEEP WAKE

APK

com.librestream.onsight.connect-armeabi-v7a.apk

Camera Clock Downloads Files Gallery

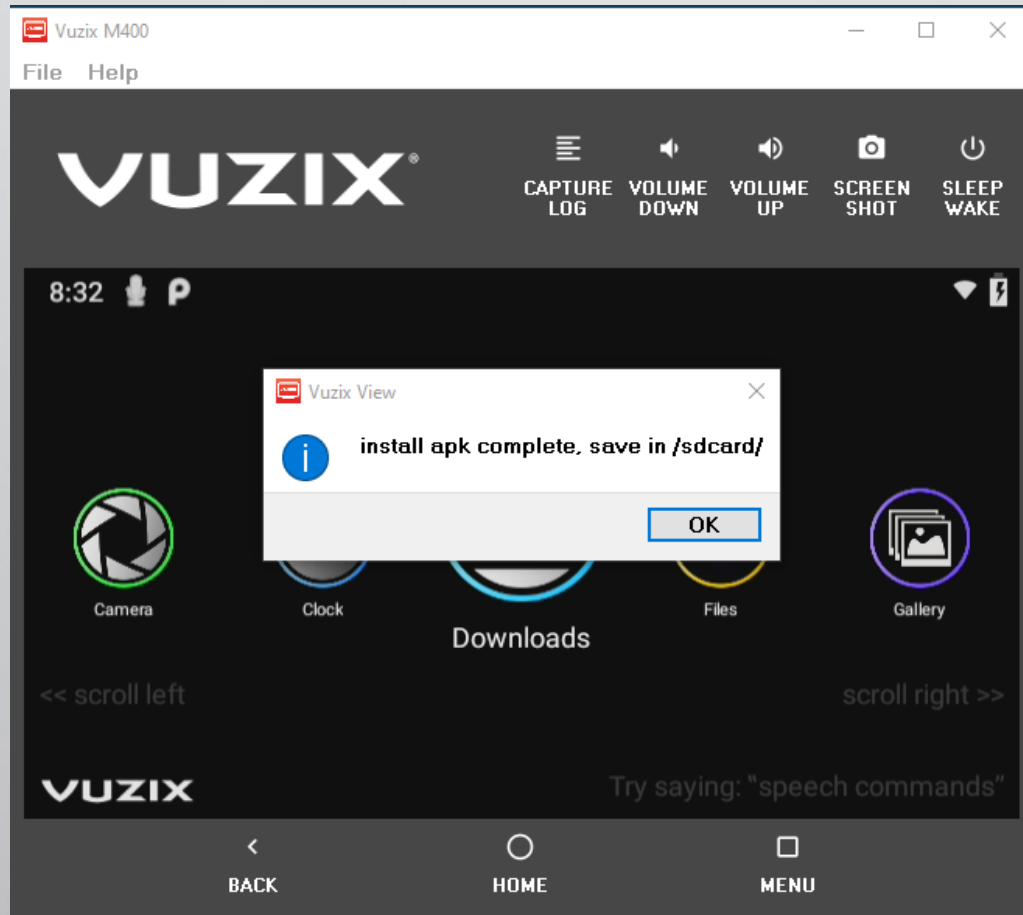
VUZIX

Try saying: "Hello Vuzix"

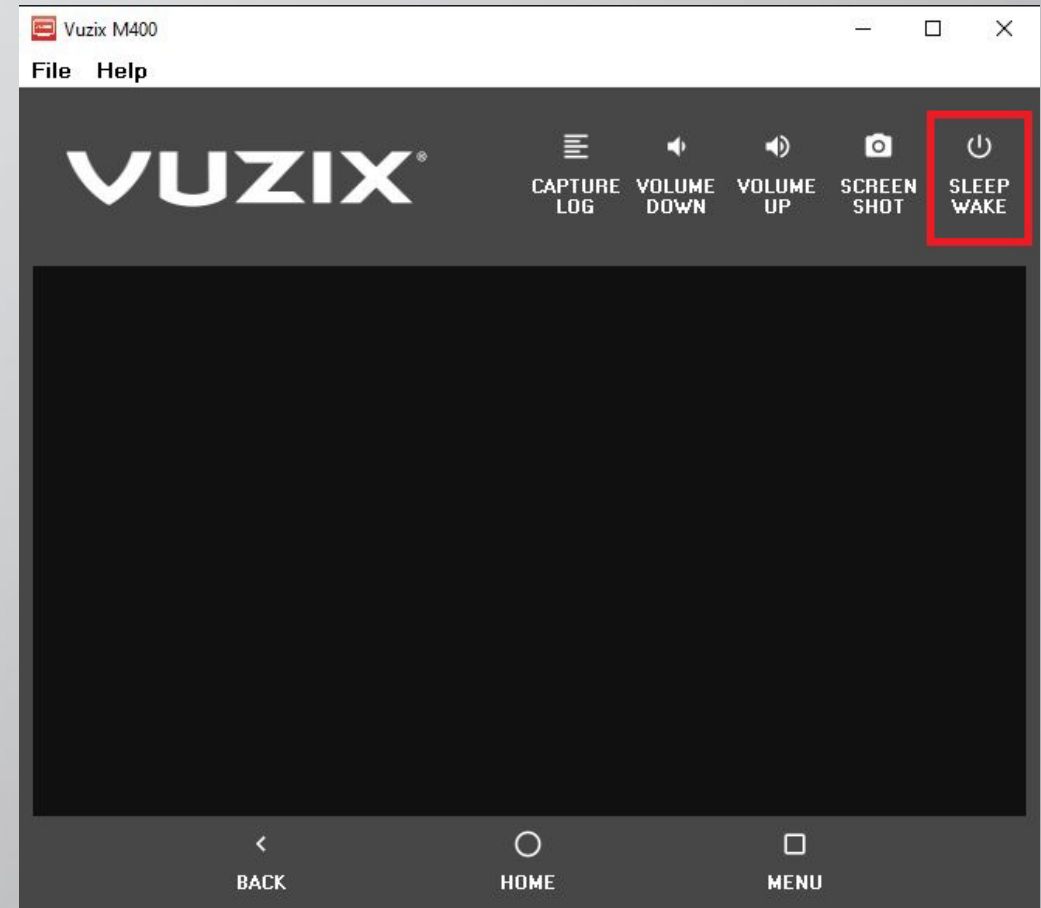
BACK HOME MENU

STEP 5 – DOWNLOAD & INSTALL ONSIGHT CONNECT (CONT.)

A message will display the install has completed.

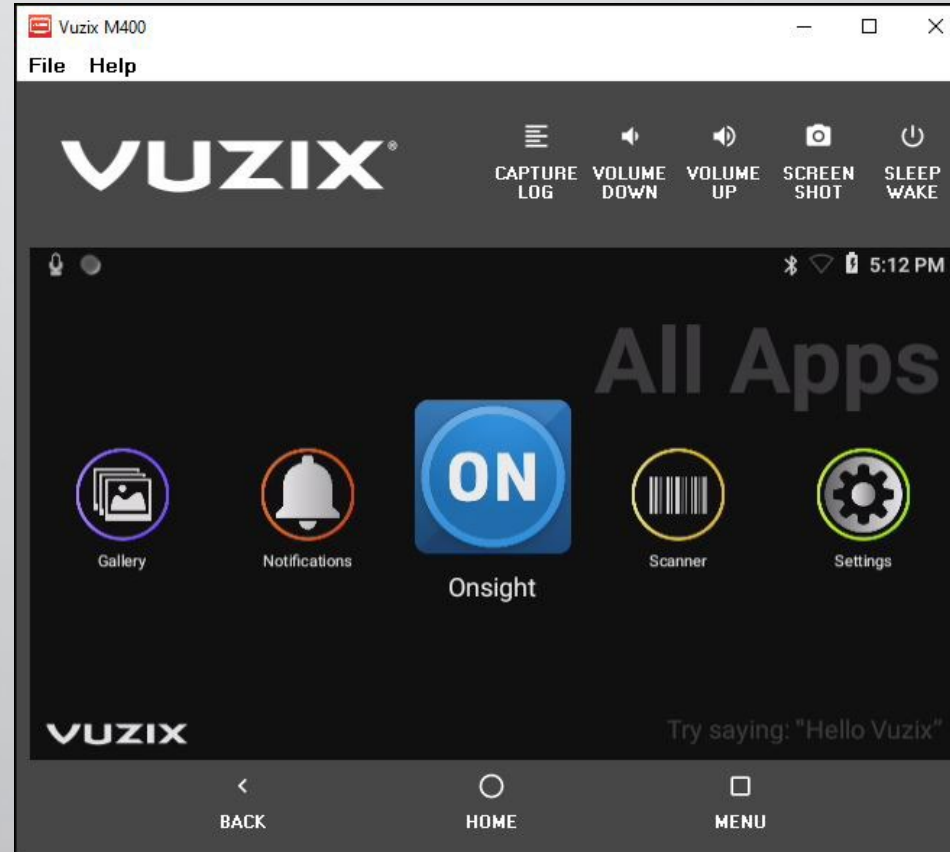


Click **SLEEP WAKE** to awaken the screen.



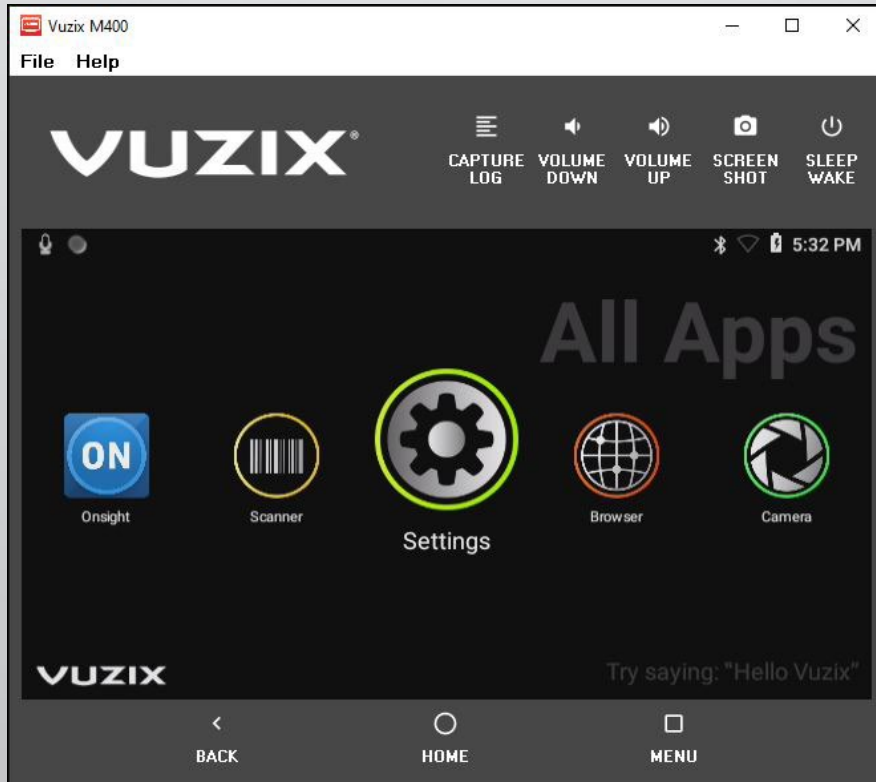
STEP 5 – DOWNLOAD & INSTALL ONSIGHT CONNECT (CONT.)

Scroll across the Home screen to see that **Onsight Connect** has been installed.

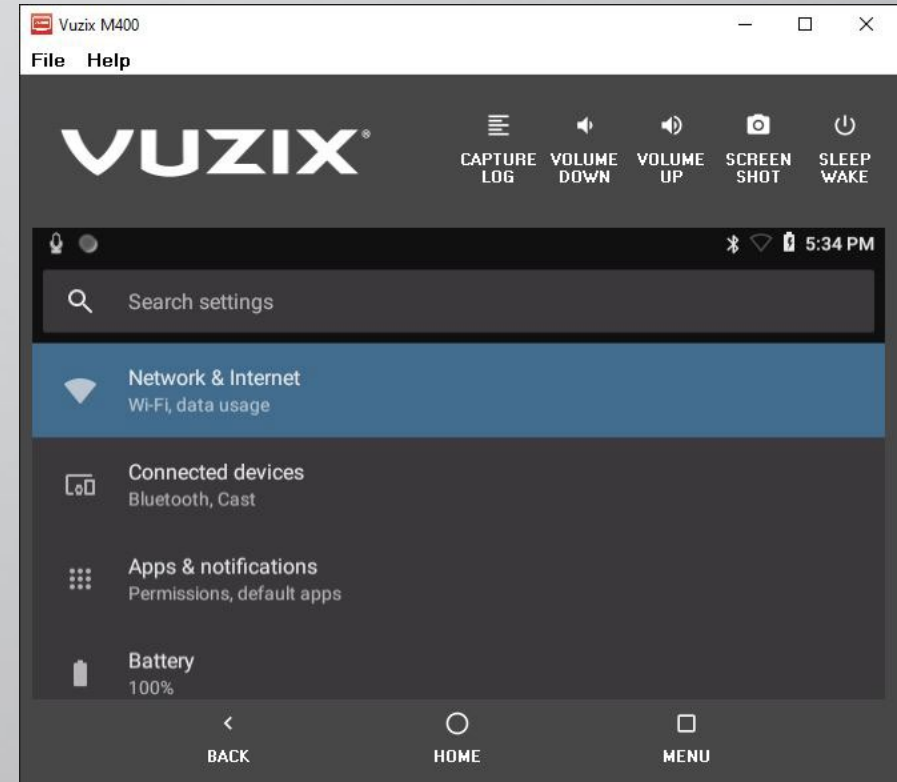


STEP 6 – CONNECTING THE VUZIX DEVICE TO WI-FI

From the Vuzix Home screen, click **Settings**.

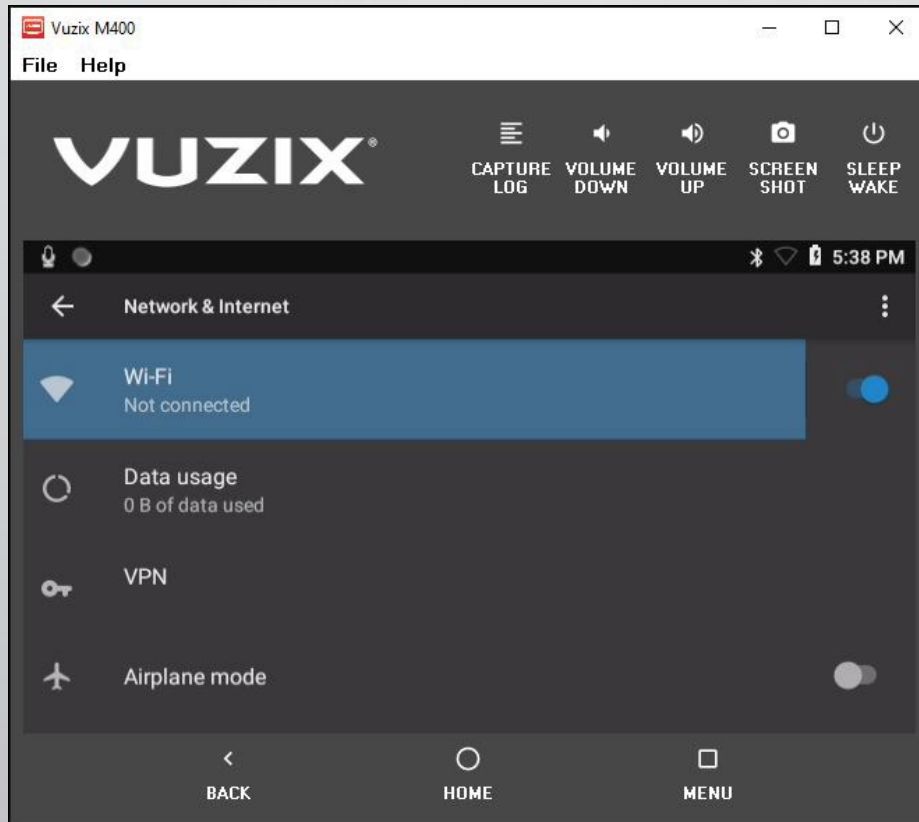


Click **Network & Internet**.

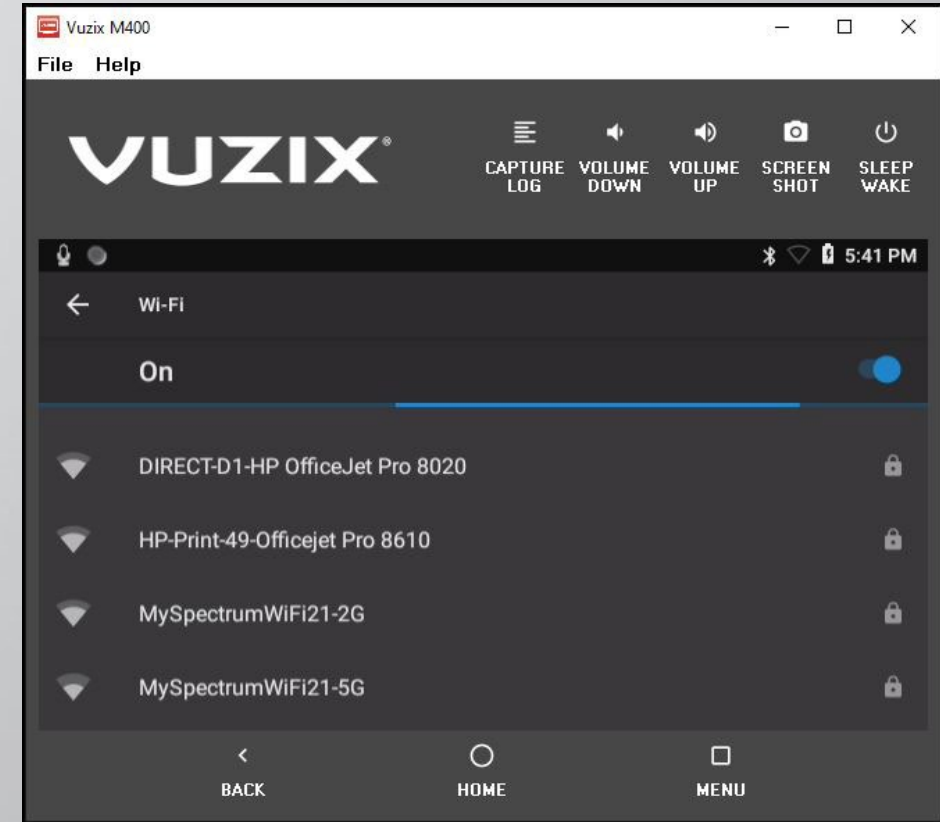


STEP 6 – CONNECTING THE VUZIX DEVICE TO WI-FI (CONT.)

Enable **Wi-Fi**.

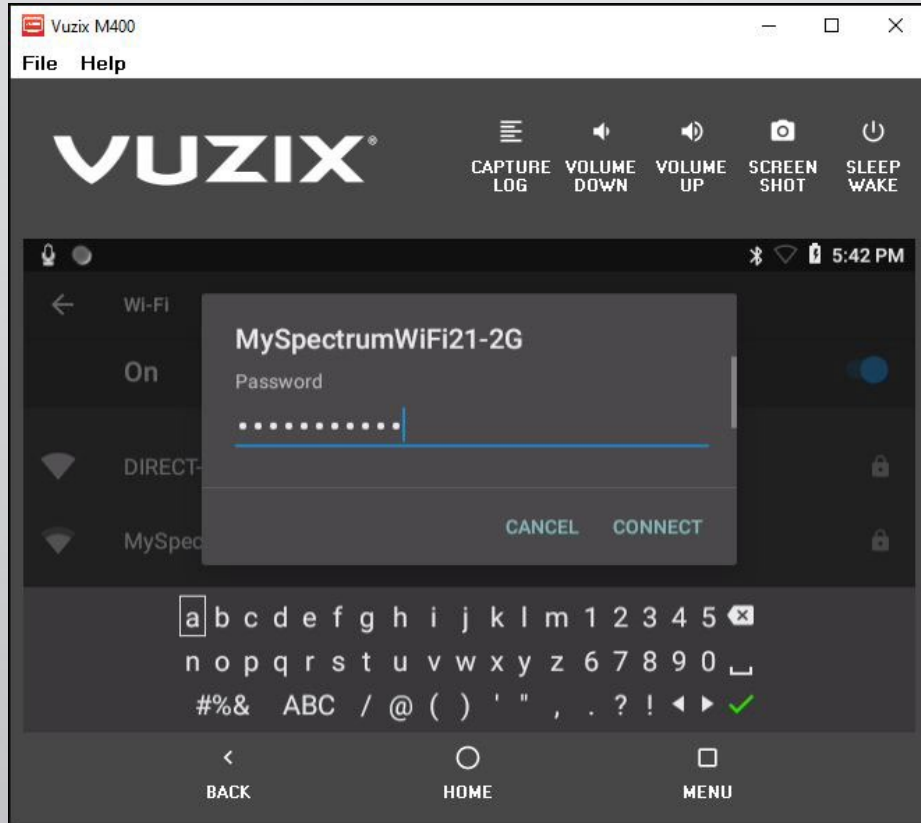


Choose a **Wi-Fi** network to connect to.

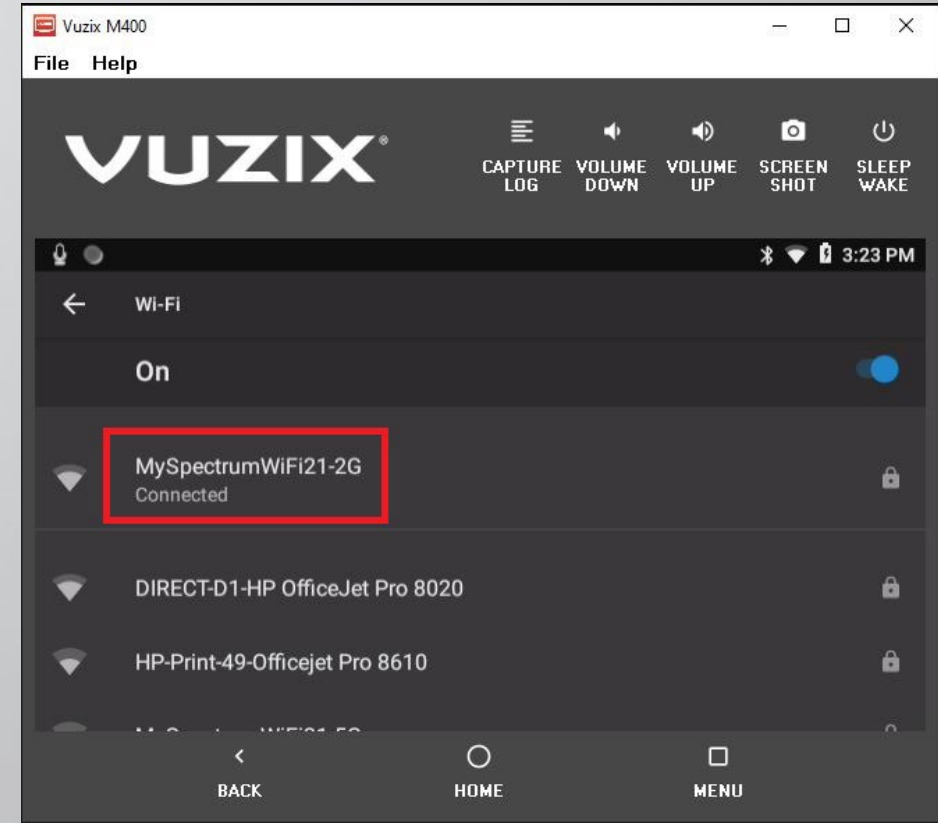


STEP 6 – CONNECTING THE VUZIX DEVICE TO WI-FI (CONT.)

Enter your Wi-Fi Password.



Confirm connection to Wi-Fi Network.



Click the **HOME** button

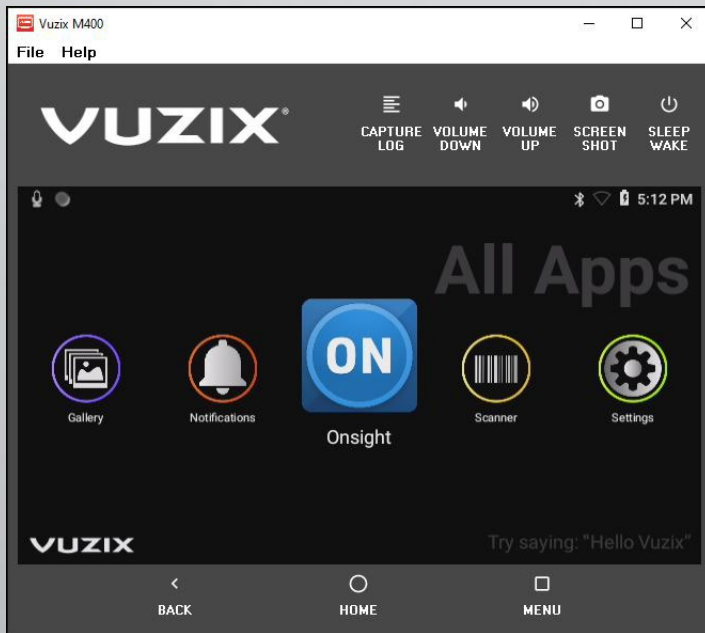
STEP 7 – LOG ON TO ONSIGHT CONNECT USING A QR CODE

IMPORTANT:

Before you begin this step, go to the Appendix on creating a QR code.

From the HOME screen, click or press **Enter** on your PC keyboard for **Onsight**.

The Onsight Connect login screen appears.



Say **Hello Vuzix** to enable the listener. Next, say **Scan Code**. Once you scan the QR Code, you will automatically be logged into Onsight Connect.

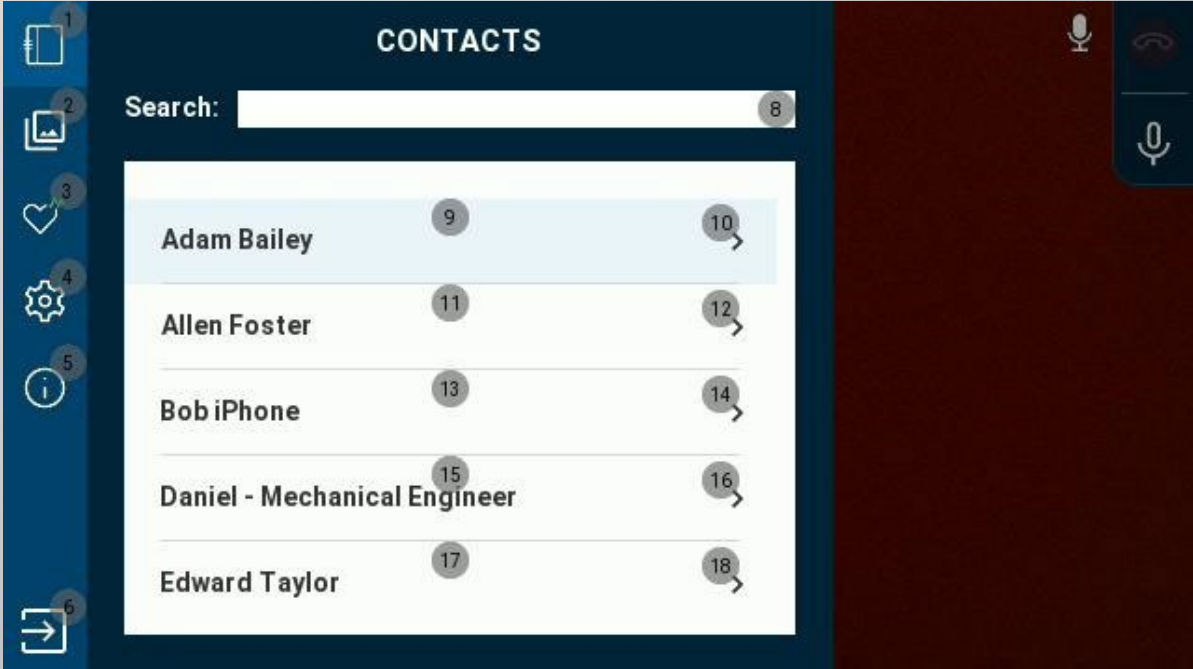
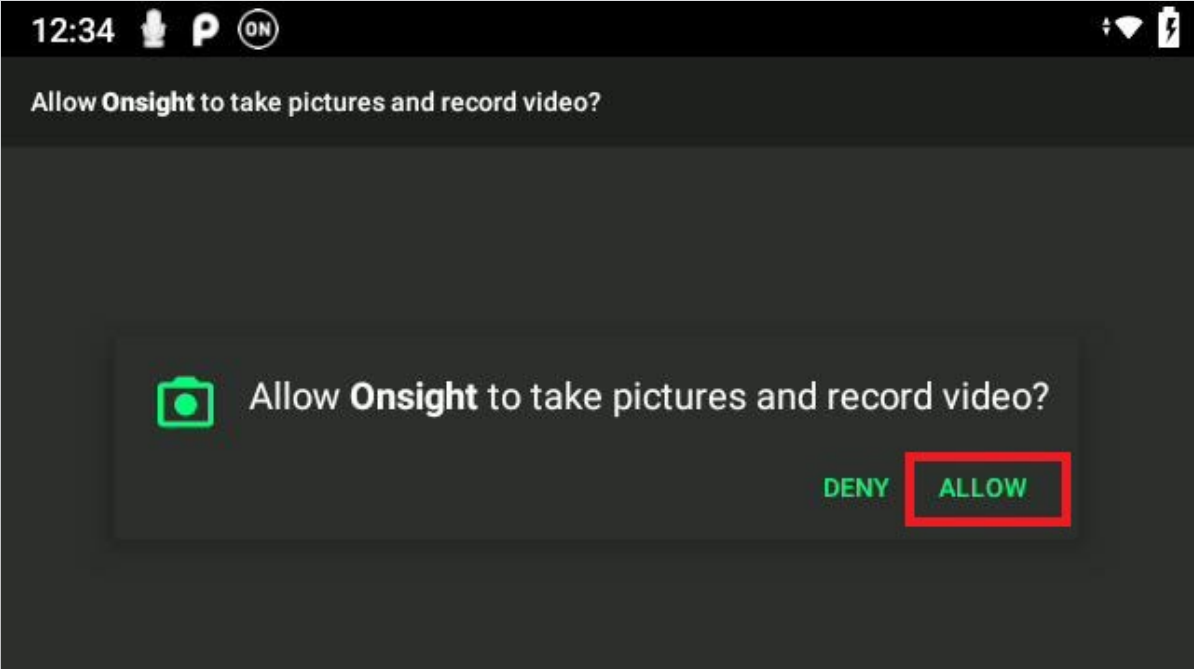
NOTE: If a custom message appears during login that prompts you to agree to terms and conditions, you must tap **OK** to advance. If you are asked for permissions to access your microphone audio, camera pictures, device's location etc., tap **OK, Allow** or **Yes**, as necessary.



STEP 7 – LOG ON TO ONSIGHT CONNECT USING A QR CODE - CONT

Use either the **Tab Key** or **Arrow Keys** on your PC keyboard or mouse to navigate and select **ALLOW** for each prompt that follows. Use the Enter key or mouse on your PC to enter each selection when prompted.

You are now logged in Onsite Connect. Click **HOME** or enable the listener once more by saying **HELLO VUZIX** and say **LOGOUT** to exit Onsite Connect.



APPENDIX – CREATING A QR CODE (BEST PRACTICE FOR LOGGING IN)

It is highly recommended you create a QR Code **before** your first log in attempt on the Vuzix device. Scanning a QR Code to log in makes the login process easier and a better experience on the Vuzix. You only have to do this once unless your log in credentials change.

Below is a QR Code text example. Make sure you include the open and close brackets, and use your Onsight Connect credentials for the Vuzix device.

```
{  
"username" : joesmith@librestream.com,  
"password" : "abcd4321",  
"rememberMe": true  
}
```

NOTE: In the QR code example above, setting **rememberMe** to **true** will enable auto login the next time you log in to Onsight Connect Vuzix.

An example QR code generator you can use:
<https://www.qrcode-monkey.com/#text>

NOTE: Use the ANSI text only when generating the QR Code. If unsure use a simple text editor to create the QR Code text, e.g., Notepad and save it in ANSI encoding.

Once created your QR Code will look something like the one seen below. Store or print your QR Code for whenever you need to log in Onsight Connect on the HMT.



*** RETURN TO STEP 7 ***

VUZIX PRODUCT SUPPORT

<https://www.vuzix.com/support/product-support>

VUZIX FAQS

<https://www.vuzix.com/support/faqs>

LIBRESTREAM

QUESTIONS / COMMENTS?

Technical Support: support@Libresteam.com

+1-204-487-0612 (Ext 1)

1-800-849-5507 (North America Toll Free)

LIBRESTREAM.COM

