

A blurred, long-exposure photograph of a multi-lane highway at night. The road curves to the right, and the lights from street lamps and distant buildings are streaked into horizontal lines, creating a sense of motion and depth. The overall color palette is dark blue and black, with highlights from the lights.

# **LIBRESTREAM**

**ADMIN INSTRUCTIONS  
SETUP REALWEAR HMT FOR USE WITH ONSIGHT CONNECT**

# HMT SETUP WITH REALWEAR'S MDM "FORESIGHT"

## RealWear Foresight

A suite of cloud services for Realwear devices offered by Realwear.

It is an MDM that provides the means to setup and configure Realwear devices and administratively manage this function to accelerate out of box deployment.

For more information and to request the set-up of a management domain for your company's deployment of HMTs go to:

<https://www.realwear.com/products/foresight>

Librestream's alternative manual method to setup HMTs is the focus of this document.

# STEPS TO MANUALLY SET UP AND CONFIGURE HMT DEVICE

This document provides the necessary steps to set up and configure the Realwear HMT device manually to operate with Onsight Connect.

This method is useful to set-up one or two devices, or as an interim step to get started with the HMT and Onsight while Realwear sets up the requested Foresight MDM.

**\*\*\* Follow the steps in the order provided \*\*\***

# PERFORM THE FOLLOWING STEPS

Step 1 – Cable Connect the HMT to the PC

Step 2 – Download and Install Realwear Explorer

Step 3 – Download and Install ADB Driver

Step 4 – Configure the HMT device

Step 5 – Download and Install Onsite Connect on the HMT

Step 6 – Enable Image Stabilization

Step 7 – Launch Onsite Connect

Step 8 – Log In to Onsite Connect

Step 9 – Perform Wireless Update on the HMT

Step 10 – Enable File Sharing with your PC

# STEP 1 – CABLE CONNECT THE HMT TO THE PC

1. Turn on the HMT by pressing and holding the Power Button for 3-5 seconds, then release.
2. Attach the provided USB cable to the PC.
3. Attach the other end to the HMT Micro-USB Port **using** the Micro-USB Converter Connector.

**NOTE:** If you are using a newer headset like the Navigator 500, then use the USB C port and cable provided. Verify that the connector is oriented and inserted properly on the HMT to prevent damage.



Micro-USB Converter Connector

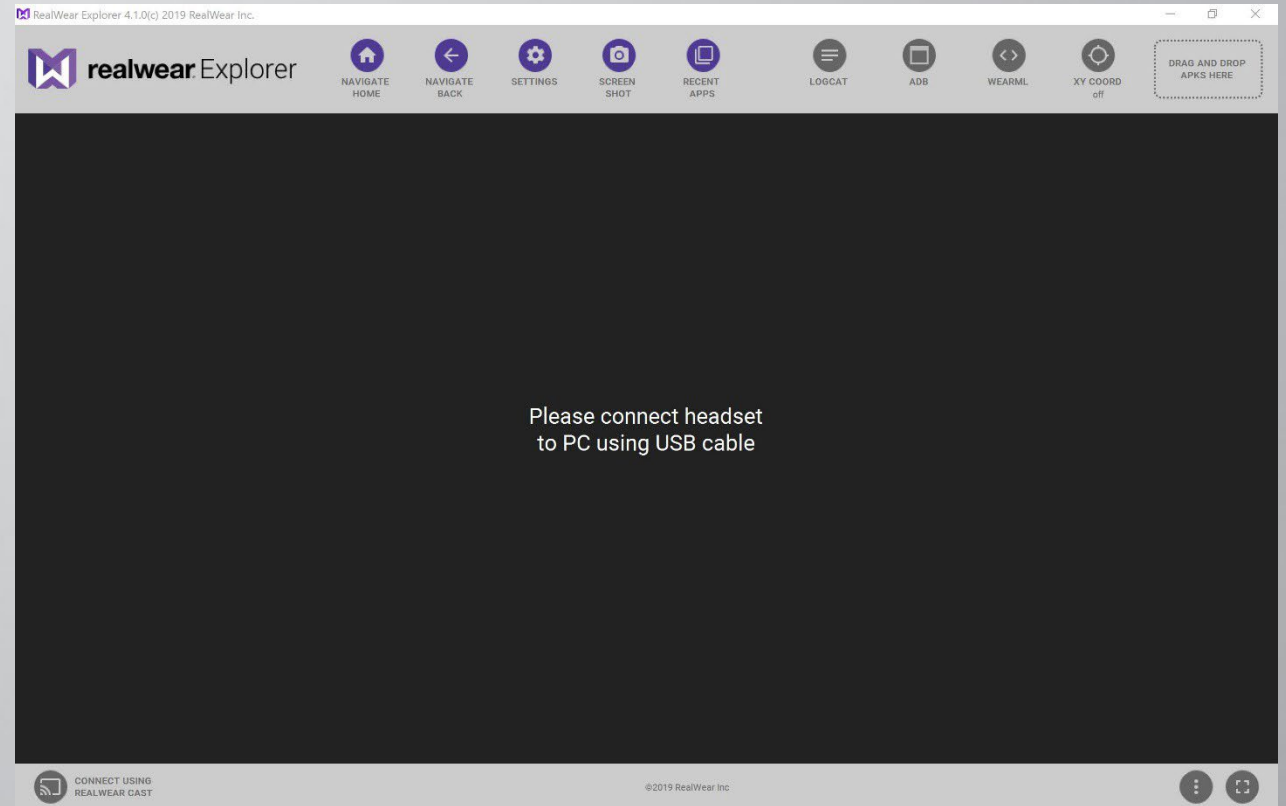


# STEP 2 – DOWNLOAD AND INSTALL REALWEAR EXPLORER

To download, click the link:

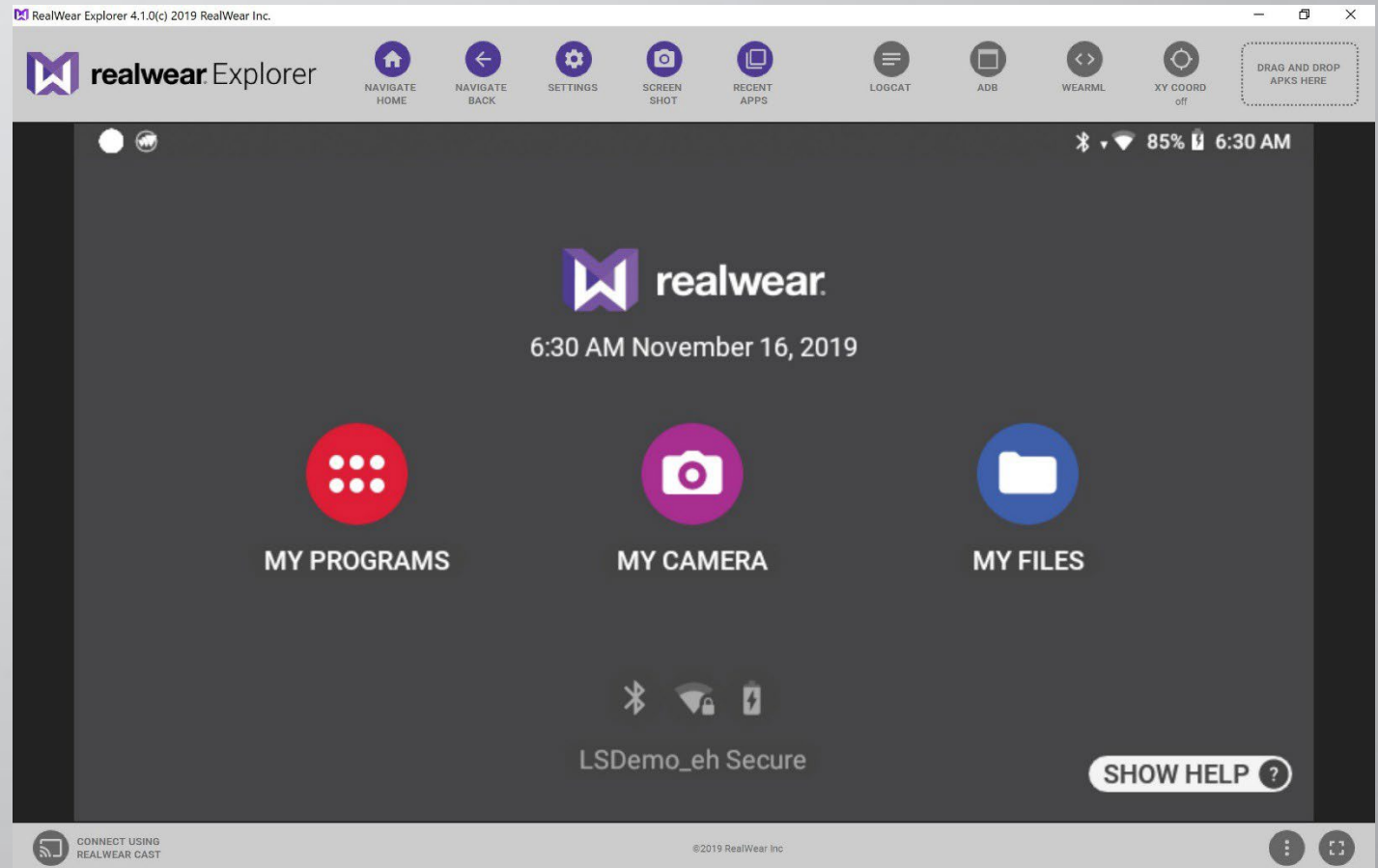
[https://support.realwear.com/knowledge/realwear-explorer#DOWNLOAD\\_EXPLORER](https://support.realwear.com/knowledge/realwear-explorer#DOWNLOAD_EXPLORER)

and install Realwear Explorer for PC or Mac as required. Follow instructions on the screen.



# STEP 2 – DOWNLOAD AND INSTALL REALWEAR EXPLORER (CONT)

Once installed, to the right is a view of the Realwear Explorer dashboard.



# STEP 3 – DOWNLOAD AND INSTALL ADB DRIVER

## Download the ADB Driver

This driver allows your computer device to communicate with the HMT. It gives your Windows PC the needed tools to link with your HMT device.

If your computer already has this driver, the driver will not reinstall. It will provide a message the driver is already installed. At which time you can go to the next step.

ADB Driver (Universal) download link: <http://dl.adbdriver.com/upload/adbdriver.zip>

- Unzip the file, and run the Installer
- If needed, click “Refresh” so the Installer can locate the connected HMT device.
- Select or highlight the HMT device, then click “Install”.
- When completed, Realwear Explorer should be connected and mirroring the screen of the HMT Display Pod.



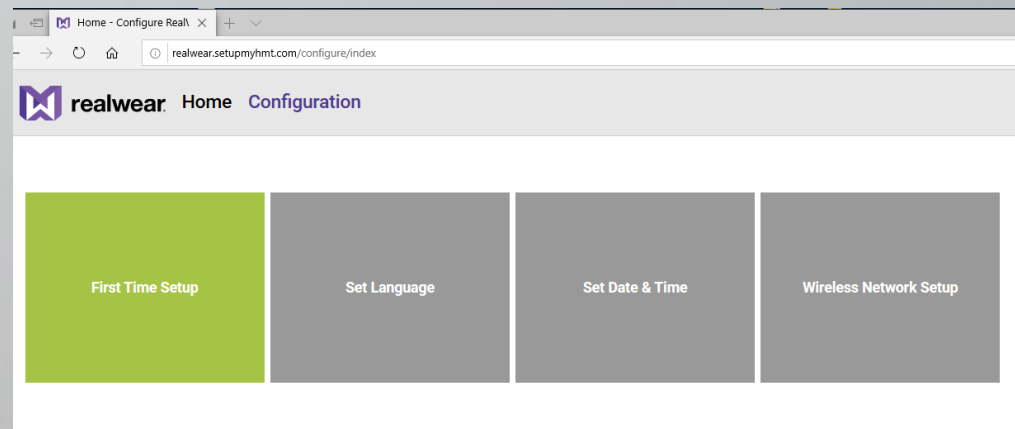
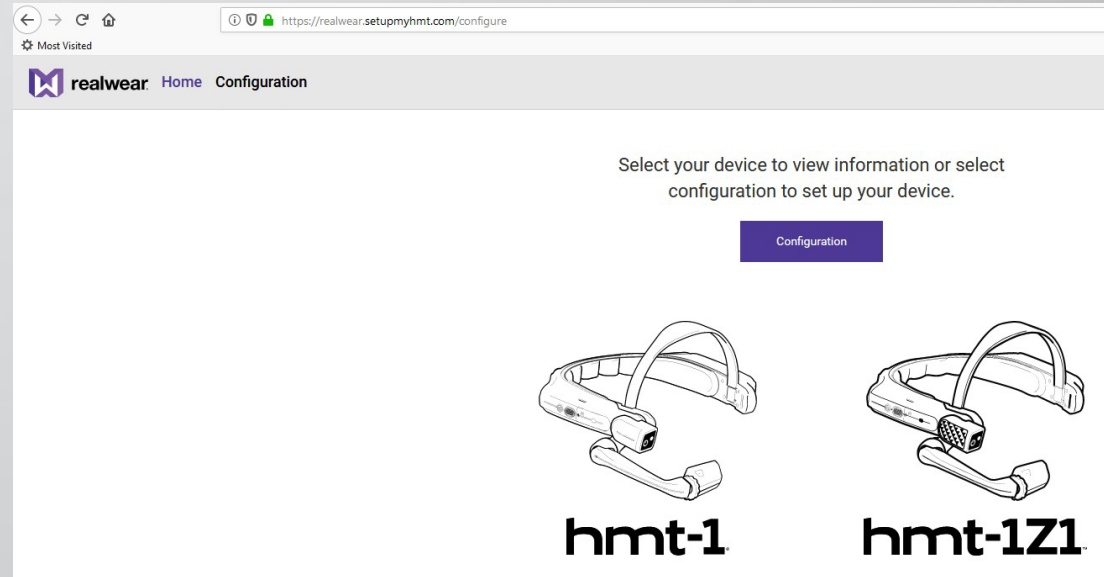
# STEP 4 – CONFIGURE THE HMT

1 – On the PC, go to:

<https://realwear.setupmyhmt.com/configure>

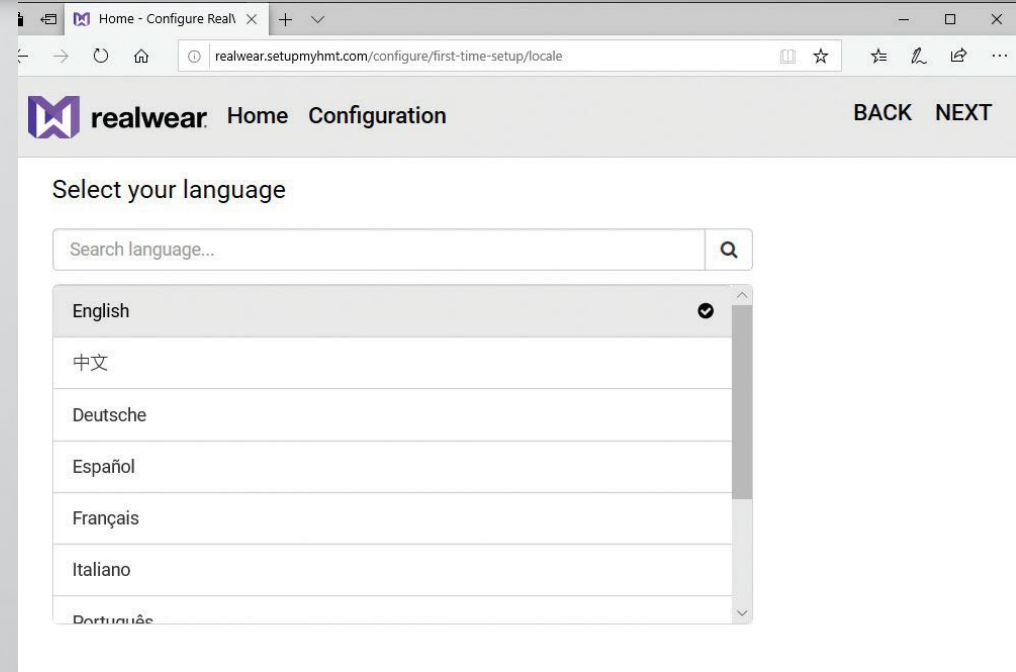
2 – Click **Configuration**

3 – Click **First Time Setup**

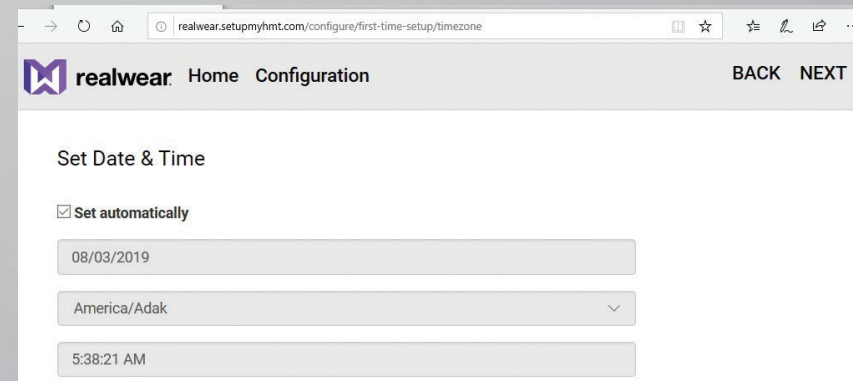


# STEP 4 – CONFIGURE THE HMT (CONT)

4 – Select **Language** and then click **NEXT**



5 – Set **Date & Time** and then click **NEXT**



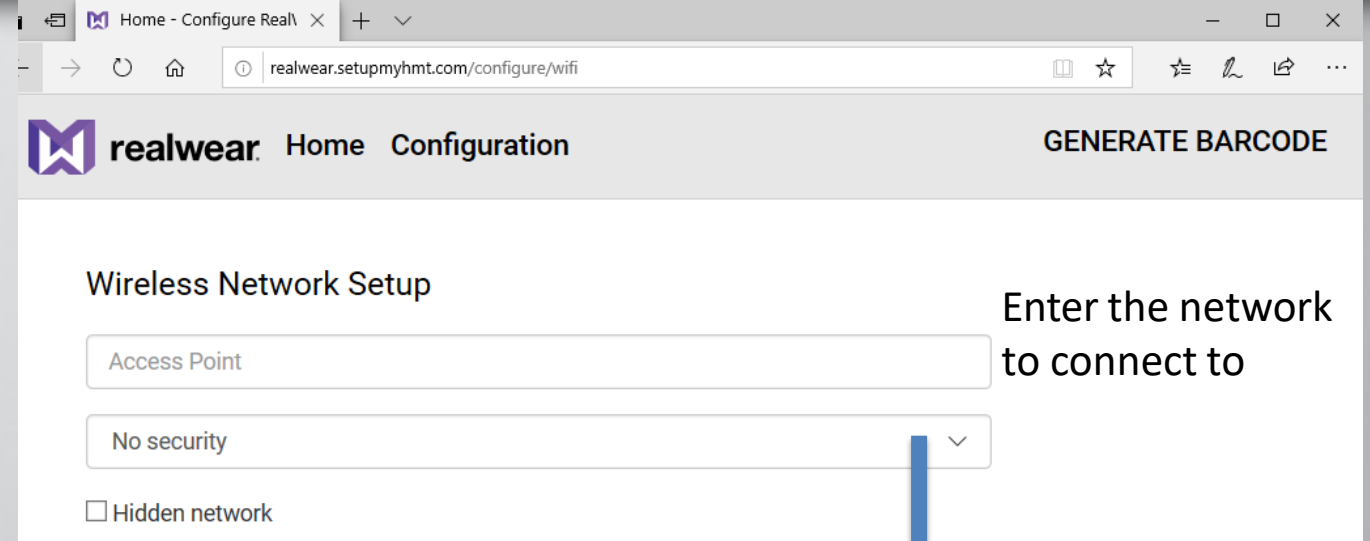
# STEP 4 – CONFIGURE THE HMT (CONT)

6 – Enter the network settings

**Note:** Access Point is typically the **SSID** (or Network / WiFi name)

7 – Once network information is entered click **GENERATE BARCODE**

8 – Follow the instructions from the generated barcode and then click **DONE**



realwear Home Configuration GENERATE BARCODE

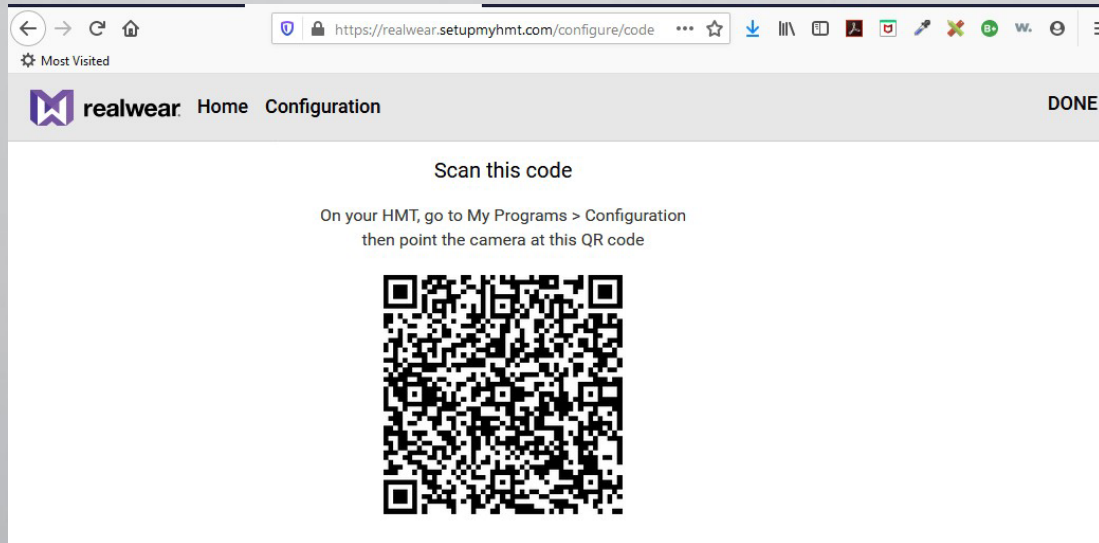
Wireless Network Setup

Access Point

No security

Hidden network

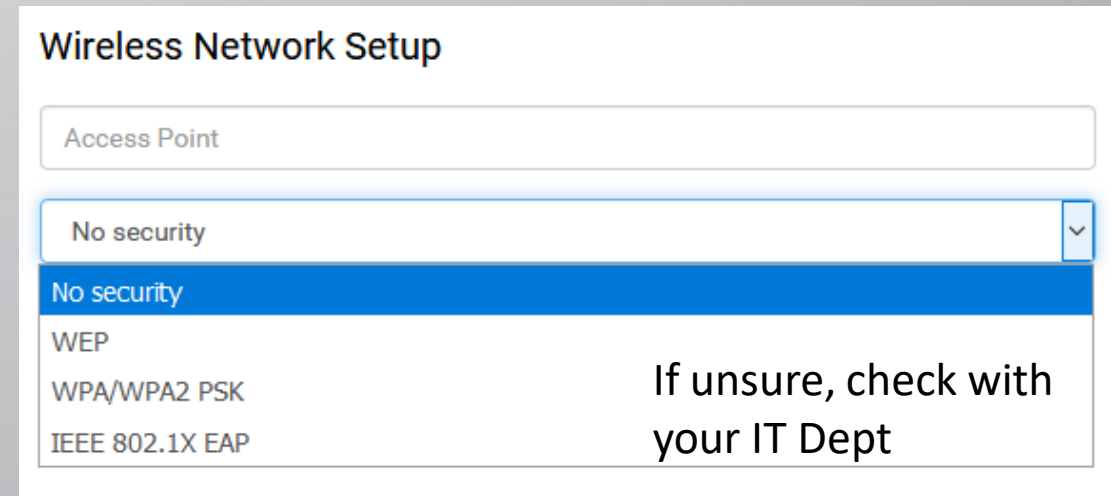

Enter the network to connect to



realwear Home Configuration DONE

Scan this code

On your HMT, go to My Programs > Configuration then point the camera at this QR code



Wireless Network Setup

Access Point

No security

No security

WEP

WPA/WPA2 PSK

IEEE 802.1X EAP

If unsure, check with your IT Dept

# STEP 5 – DOWNLOAD AND INSTALL ONSIGHT CONNECT ON THE HMT

Once the HMT is configured to operate with your PC, install Onsite Connect by doing a drag/drop of the Onsite APK file onto RealWear Explorer.

This Onsite Connect application (APK file) can be downloaded from the Librestream Support Site: <https://librestream.com/onsight-support>

Scroll down the page to **RealWear HMT v11.4.1 (10810)** click "**Downloads and Updates**", then click "**Download the latest APK**".

RealWear HMT v11.4.1(10810)

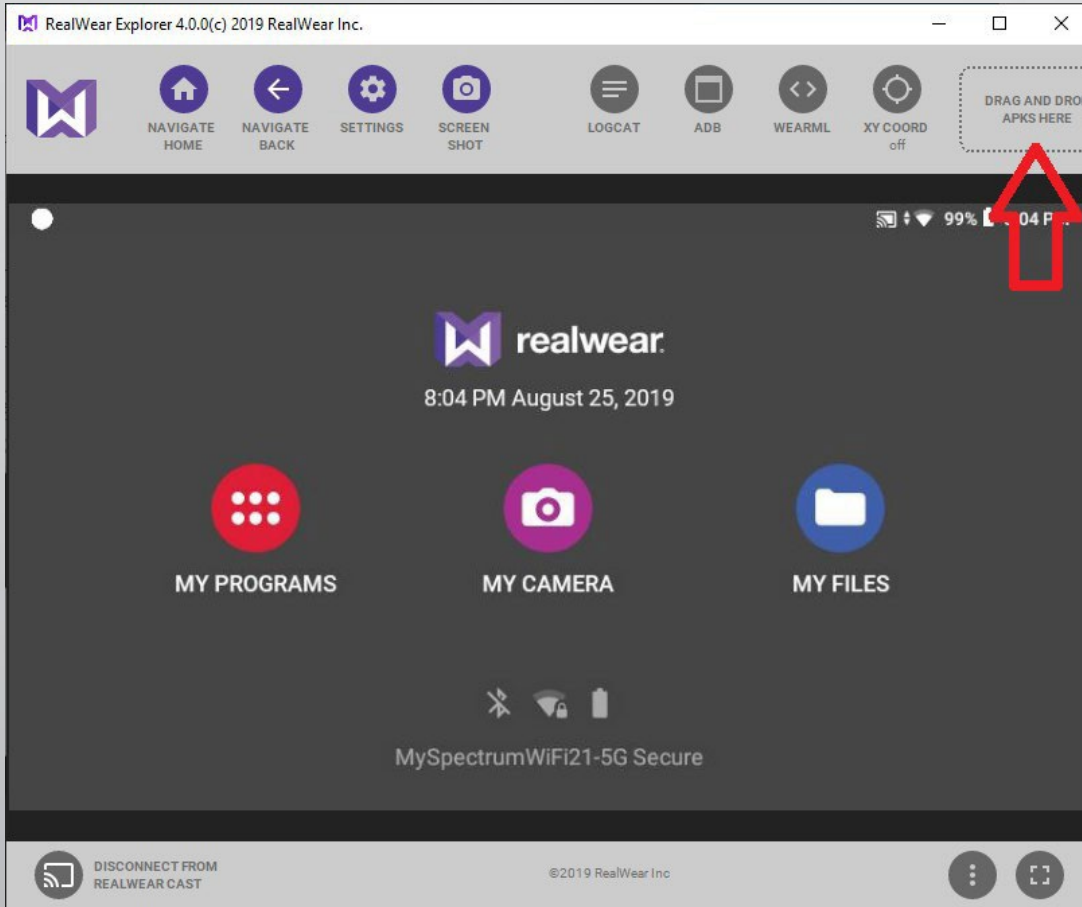
⊖ Downloads and Updates

[Download the latest APK](#) (LINK)

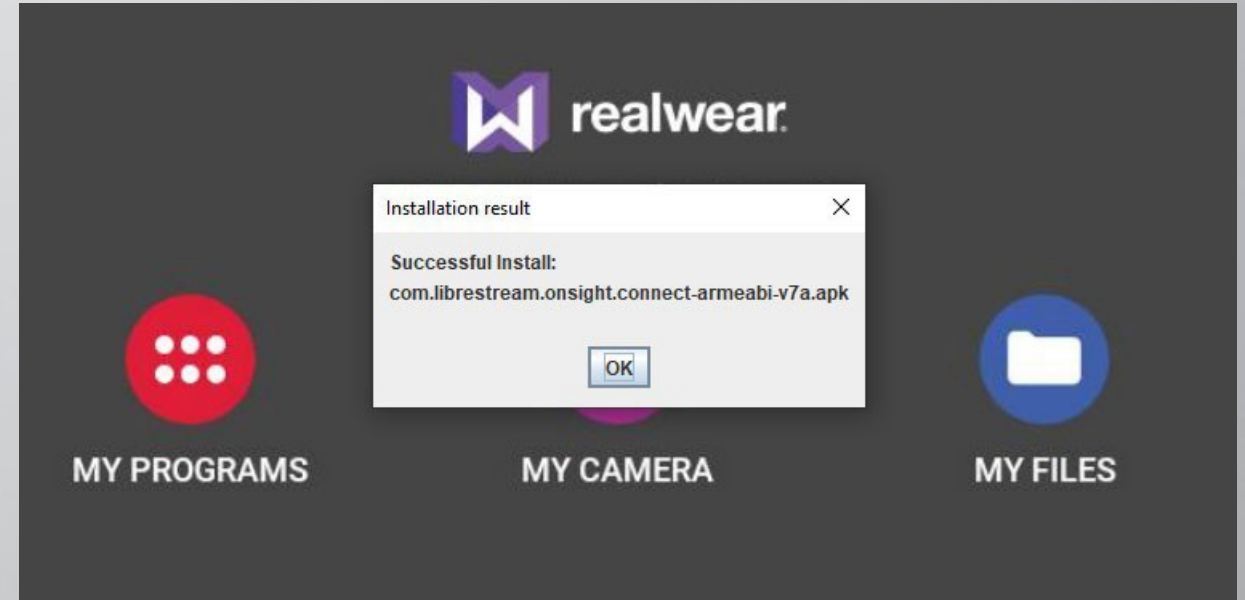
[Software Requirements](#) (MODAL)

# STEP 5 – DOWNLOAD AND INSTALL ONSIGHT CONNECT ON THE HMT (CONT)

Drag and drop the APK file (see arrow).

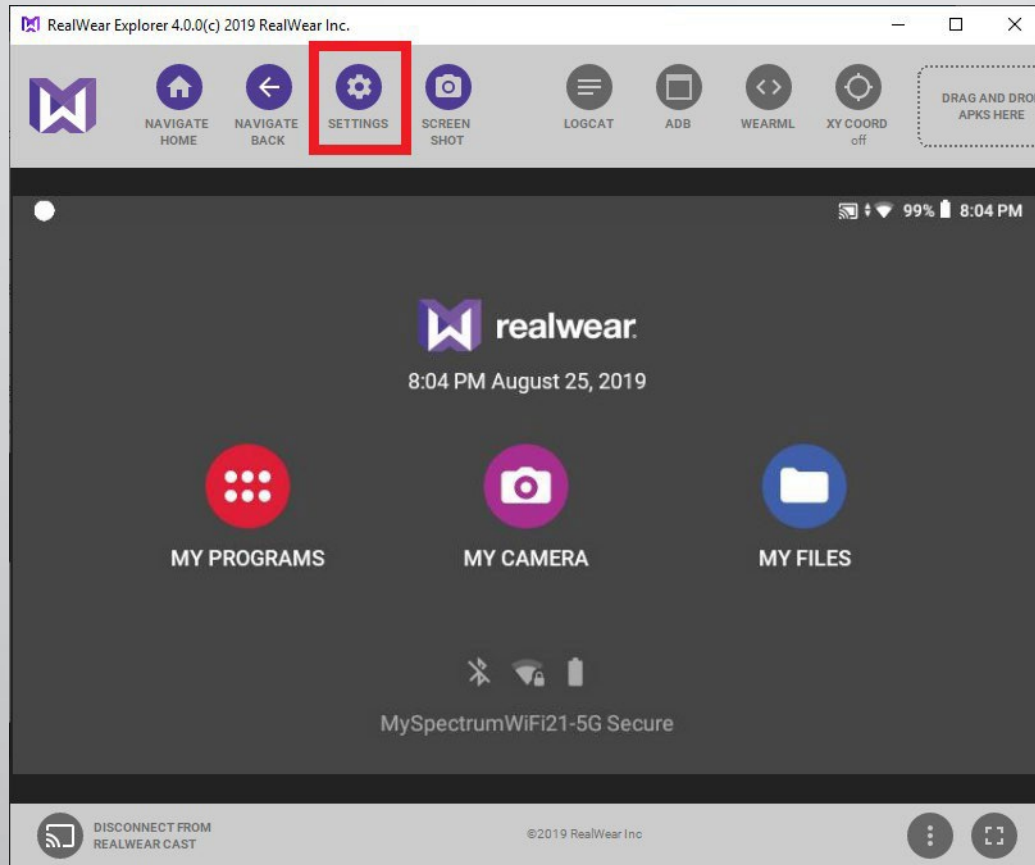


Once the installation is complete, click **OK**.

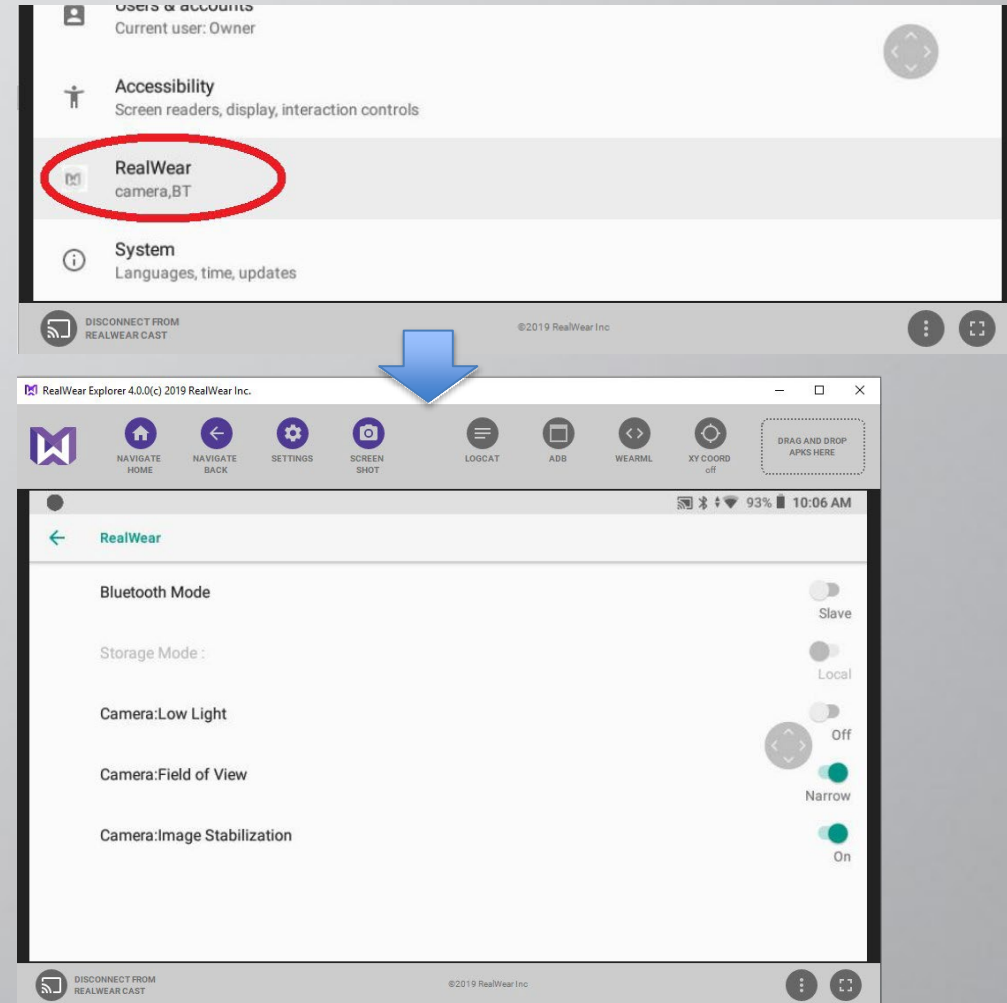


# STEP 6 – ENABLE IMAGE STABILIZATION

From Realwear Explorer, click **SETTINGS**

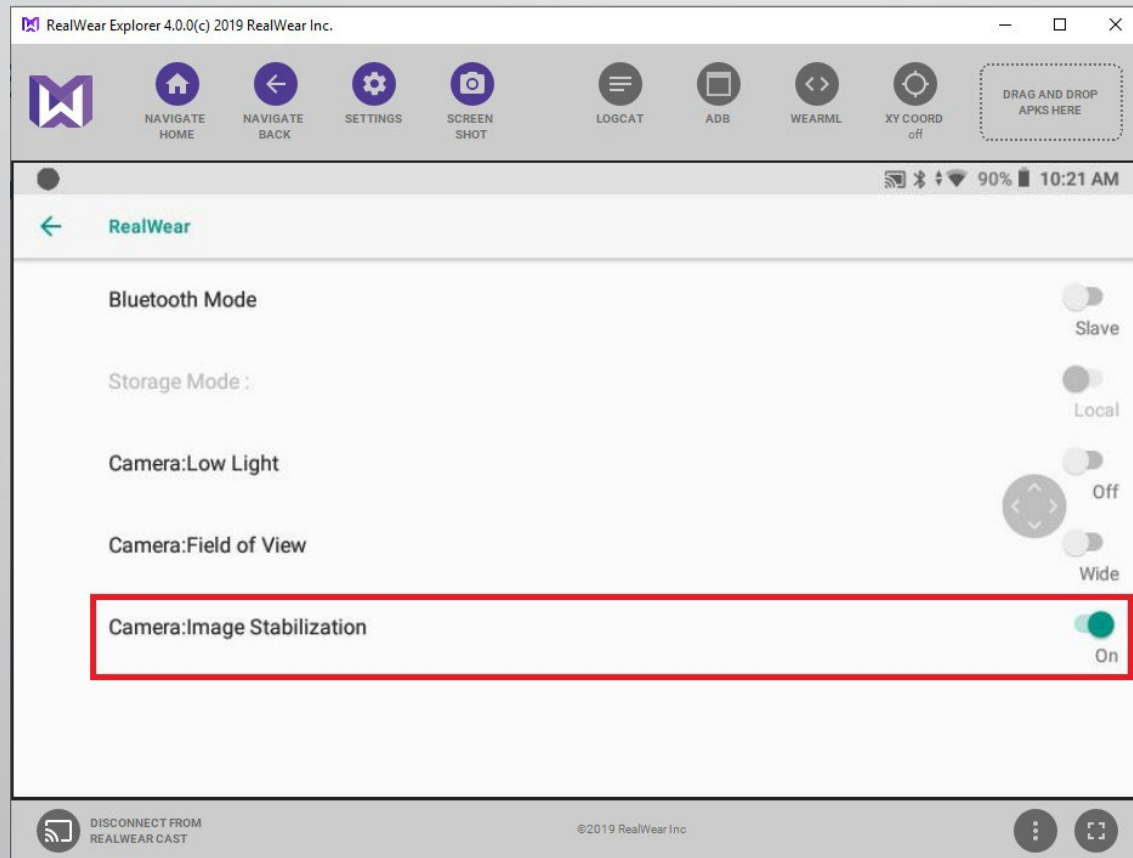


Using your arrow-keys scroll down and select **RealWear**



# STEP 6 – ENABLE IMAGE STABLIZATION (CONT)

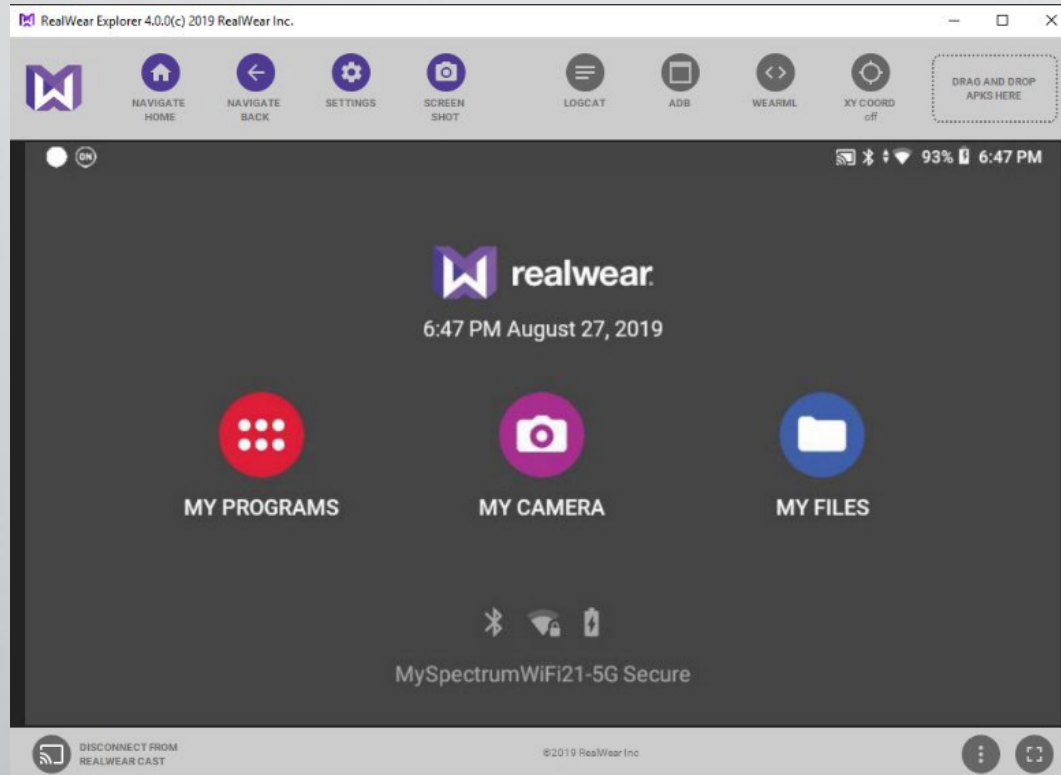
## Enable Camera: Image Stabilization



**OPTIONAL:** Set the **Field of View**. This can be determined by the “use case” on the HMT’s planned use.

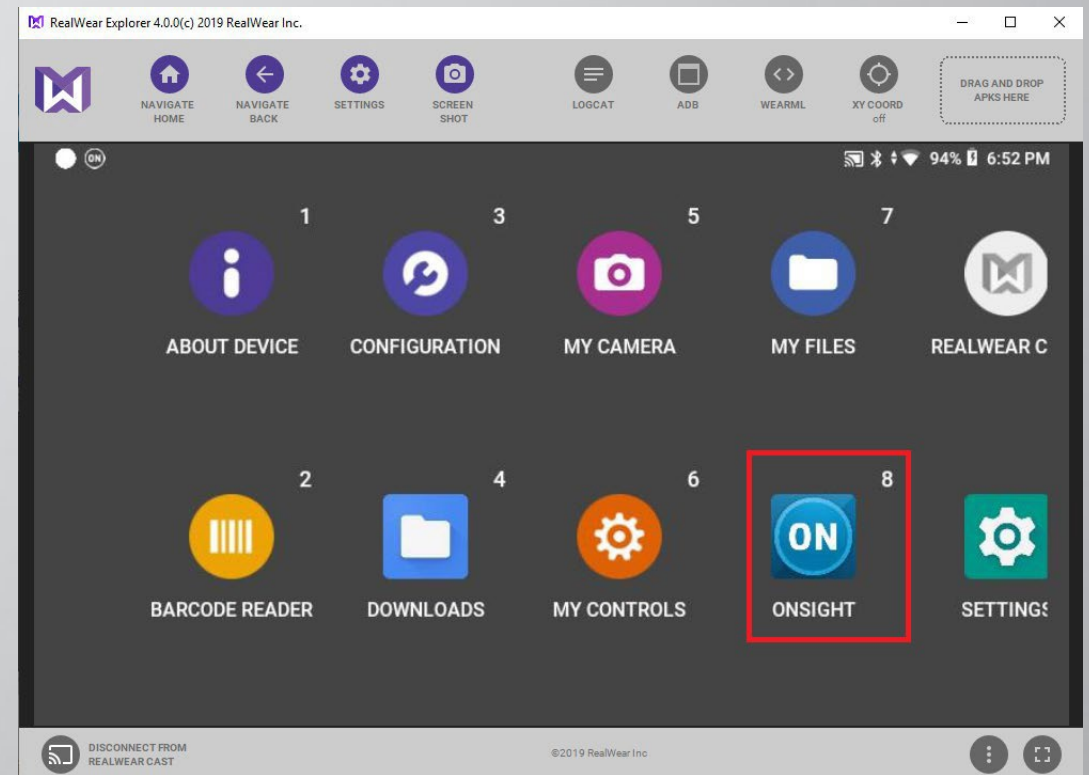


# STEP 7 – LAUNCHING ONSIGHT CONNECT



Onsight Connect can be launch from the HMT while connected to your computer.

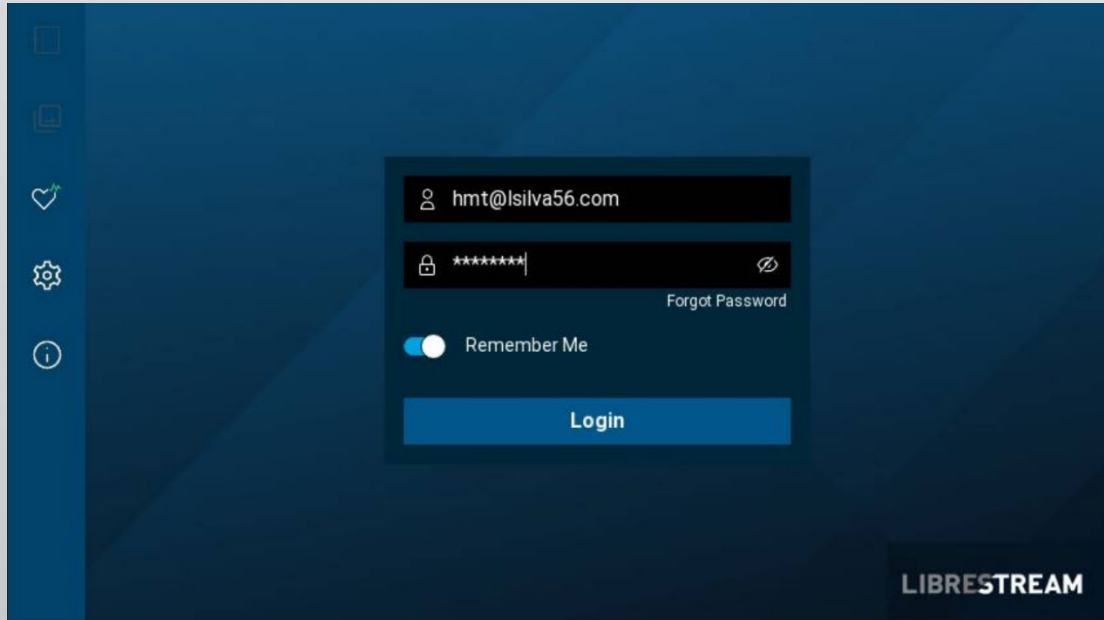
Return to the Home screen, click **MY PROGRAMS** or say the voice command **“MY PROGRAMS”**.



Click **“ONSIGHT”** or say the voice command **“ONSIGHT”** or say **“Select Item 8”**.



# STEP 8 – LOG IN TO ONSIGHT CONNECT

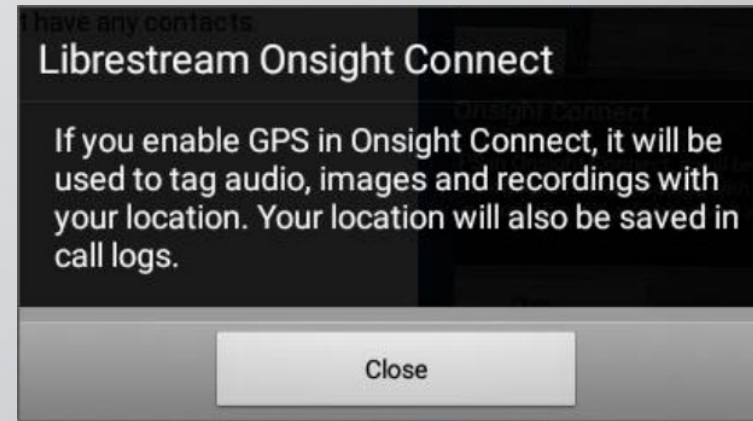


To set the Username say the command '**SET USERNAME**'

Or say '**Select Item 4**'.

This will open the keyboard and place the cursor in the Username box. Type in your user name, then click or say '**ACCEPT**'.

For password, say the command '**SET PASSWORD**', and with your keyboard type in the password, then click or say '**ACCEPT**'.



Click to close or say '**Close**' to close the GPS message notice.

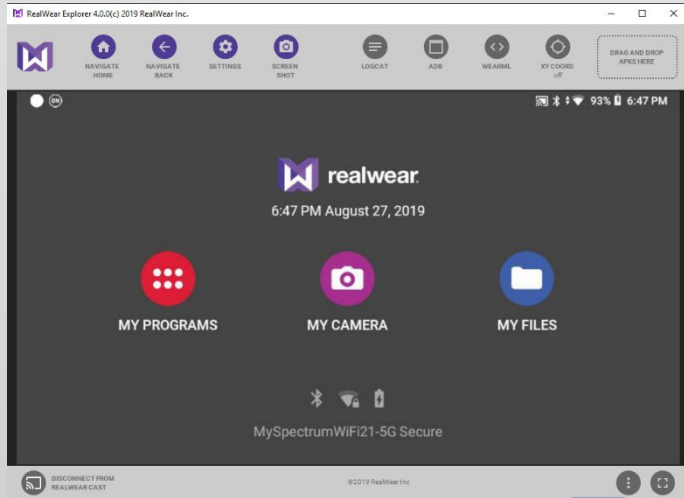
**NOTE:** If a custom message appears during login that prompts you to agree to terms and conditions, you must tap OK to indicate compliance in order to advance. If you are asked for permissions to access your microphone audio, camera pictures, device's location etc., tap OK, Allow or Yes, as necessary.

**TIP:** Another option to log in to Onsite is by creating a QR Code. The text code and instructions needed to do this is in the Onsite Realwear HMT User Guide.

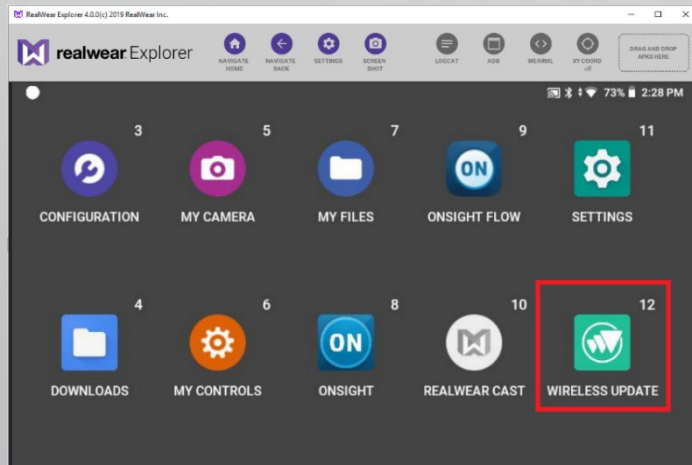
There is also a short video called: '**Onsite Realwear HMT-1 – Log in and Make a Call**' that can be found at the Librestream Training Page at: <https://librestream.com/training-deployment-adoption-materials/>

# STEP 9 – PERFORM WIRELESS UPDATE ON THE HMT

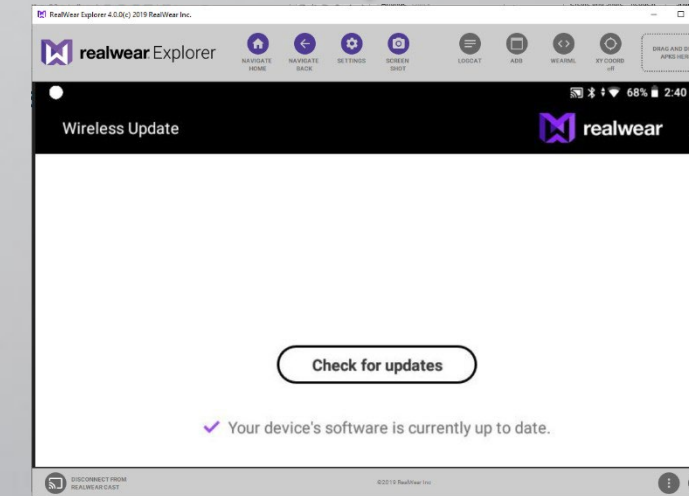
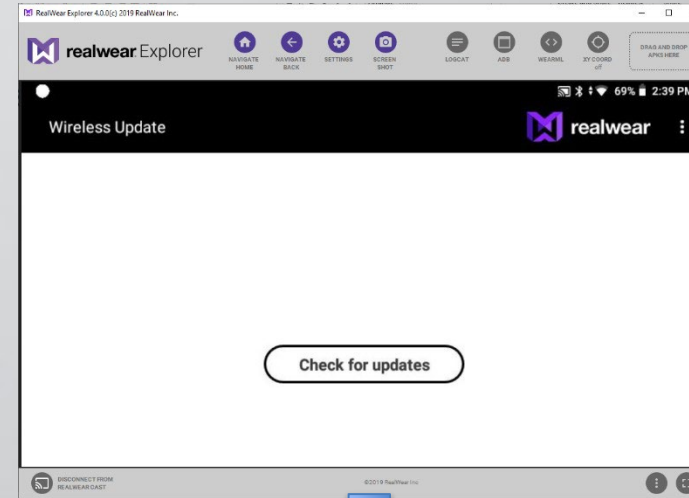
From Realwear Explorer, click **MY PROGRAMS**



Click **WIRELESS UPDATE**



Click **Check for updates**



Make certain the software is up to date. If not, download and install the latest update.

**FINISHED!**  
Your Realwear HMT device is ready to use with Onsite Connect.

# STEP 10 – ENABLE FILE SHARING WITH YOUR PC

You can enable File sharing if you want to be able to transfer pictures, videos and media to your PC.

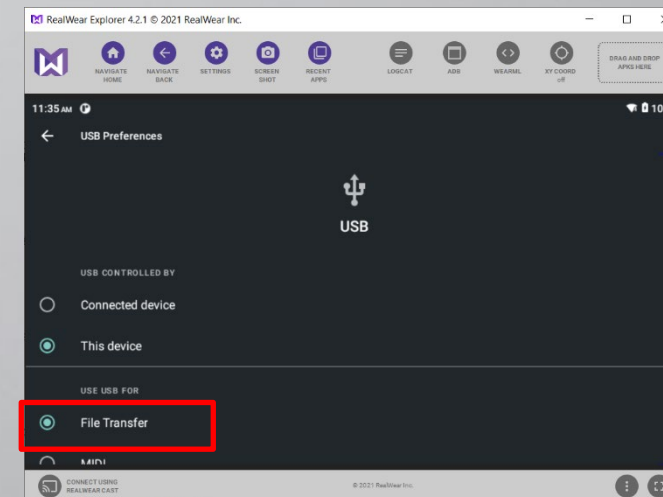
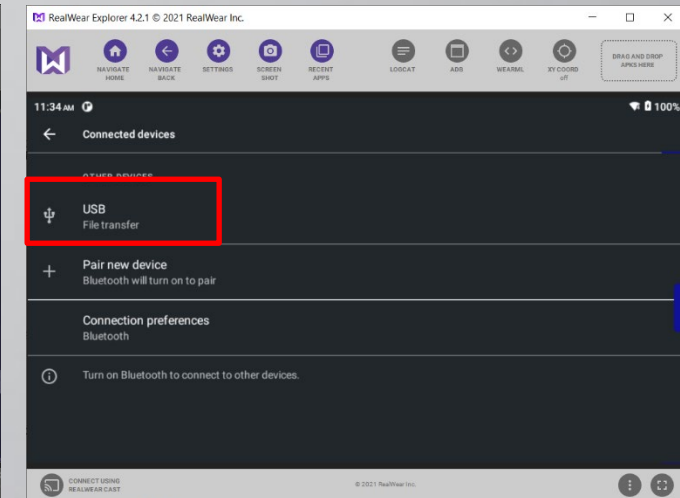
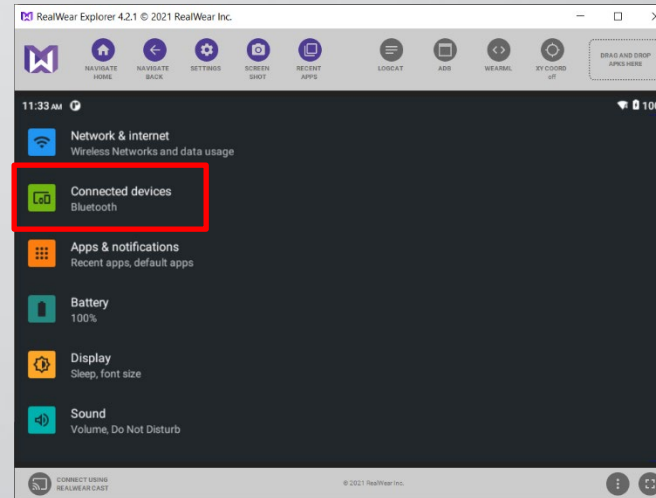
To enable File Sharing:

Say “**NAVIGATE HOME**” to access the Home screen.

Say “**MY PROGRAMS**” followed by “**SETTINGS**”.

Say “**CONNECTED DEVICES**”.

Say “**USB**” followed by “**File Transfer**” to enable file sharing with your PC as necessary.



# LIBRESTREAM

## QUESTIONS / COMMENTS?

Technical Support: [support@Libresteam.com](mailto:support@Libresteam.com)

+1-204-487-0612 (Ext 1)

1-800-849-5507 (North America Toll Free)

---

**LIBRESTREAM.COM**

