



APP NOTES

Onsight Rugged Smart Camera Wireless
Network Configuration

July 2016

Table of Contents

1. Overview.....	4
1.1 Onsight Setup Wizard.....	4
1.2 Onsight Wireless Manual Setup.....	4
1.3 Hotspot Login.....	8
1.4 View Network Status.....	10
2. For More Information.....	11

Document Revision

Librestream

Low Bandwidth Media Configuration

Doc #: 400221-03

July 2016

Information in this document is subject to change without notice.

Reproduction in any manner whatsoever without the written permission of Librestream is strictly forbidden.

Copyright © 2006–2016 Librestream Technologies, Incorporated.

All rights reserved.

Name of Librestream Software OnSight Connect

Copyright Notice: Copyright 2004–2016 Librestream Technologies Incorporated. All Rights Reserved.

Patents Notice: United States Patent # 7,221,386, together with additional patents pending in Canada, the United States and other countries, all of which are in the name of Librestream Technologies Inc.

Trademark Notice: Librestream, the Librestream logo, OnSight, OnSight Connect, OnSight Mobile, OnSight Enterprise, OnSight License Manager, OnSight TeamLink, OnSight Account Manager and OnSight Management Suite are either registered trademarks or trademarks of Librestream Technologies Incorporated in Canada, the United States and/or other countries. All other trademarks are the property of their respective owners.

1. Overview

The purpose of this document is to describe how to establish a wireless connection between an Onsite Device and a wireless access point.


NOTE: Before proceeding, you must know the required wireless security credentials in order to establish a connection. For example, you should know the username and password and/or certificates. These security credentials will depend on the type of security enabled on the access point. Consult with your Information Technology department if you do not have this information.

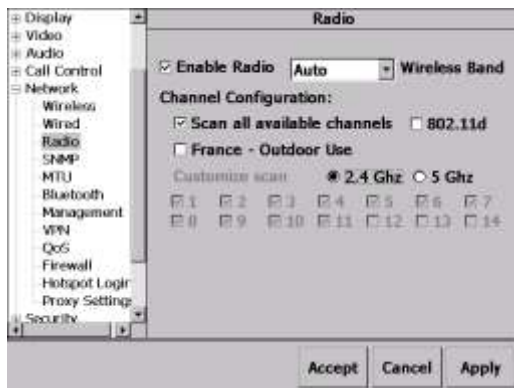
1.1 Onsite Setup Wizard

The Setup Wizard walks the user through the steps of configuring the Onsite Rugged Smart Camera. Wireless network configuration is included as part of the Setup Wizard. The Setup Wizard will run automatically the first time the Onsite camera is powered up out of the box or it can be launched from the login screen by clicking on the [Run Setup Wizard](#) link.

1. Have your network credentials ready for entering when prompted.
2. On the User Authentication screen, press [Run Setup Wizard](#) to launch the Setup Wizard.
3. Follow the onscreen instructions.
4. *You must enter the correct time and date, this is required to support Onsite user authentication.*
5. If you do not require certificates for user authentication press No when you are prompted with 'Does your installation require the use of a certificate?' Consult with your IT department if you are not certain.
6. Select the Wireless network you would like to connect to and follow the onscreen instructions for entering your network credentials.

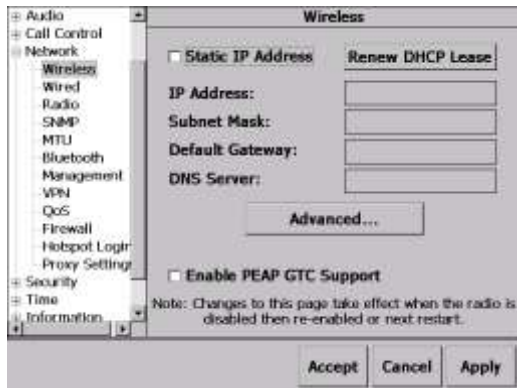
1.2 Onsite Wireless Manual Setup

1. On the User Authentication screen, press the Skip button to login as an Anonymous User.
2. Tap the Radio icon,  at the top of the Viewfinder to display the Network Status screen.
3. Tap the 'configure' button to display the Wireless Configuration screen.
4. Select Network\Radio from the directory tree. Verify that the 'Enable Radio' check box is enabled.

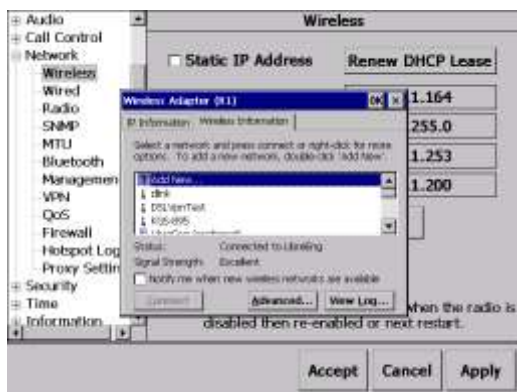


- Select the Radio band you wish to use, if unsure leave it set to Auto.
- Select the channels you wish to operate on, if unsure leave it set to 'Scan all available channels'.

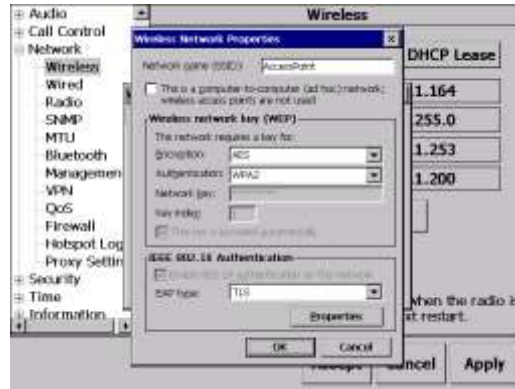
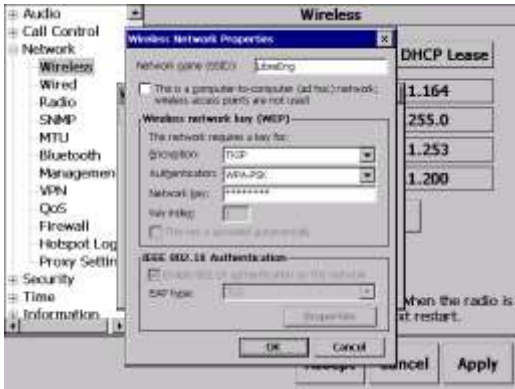
- Select Network\Wireless from the directory tree. The Wireless page is displayed, as below.



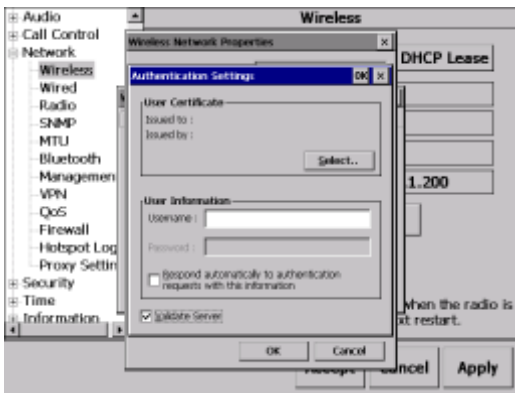
- Check the 'Static IP Address' box if you have been assigned a static IP address for the device.
 - If using DHCP addressing, leave it blank.
 - NOTE: The static IP address change will not take effect until the next restart of the device.
- Tap the 'Advanced...' button to display the 'Wireless Adapter' dialog, as below.
 - The Wireless Adapter dialog displays a scrollable list of Service Set Identifiers (SSIDs) in the area.



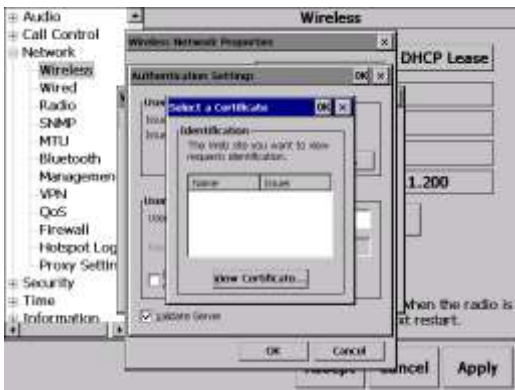
- Double-click the SSID in the list that you wish to connect.
 - NOTE: The Access Point you are connecting to may not be broadcasting its SSID. In this case you will need to double-click the 'Add New' line in the list to access the 'Wireless Network Properties' dialog.
- The 'Wireless Network Properties' dialog will be displayed, as below. The active elements on the page will depend on which type of Encryption and Authentication the Access Point supports.
 - WPA-PSK requires the client to enter a Pre-Shared Key
 - WPA2 requires either TLS or PEAP credentials



10. Enter the Wireless Network security credentials.
- If using WPA-PSK enter the Network Key.
 - If using IEEE 802.1X Authentication (TLS or PEAP), tap the 'Properties' button to display the 'Authentication Settings', as shown below.
 - Tap the Select button to choose the required User Certificate (TLS) and/or Enter the Username/Password (PEAP).
 - Note: For TLS enter the Username for the certificate you select.



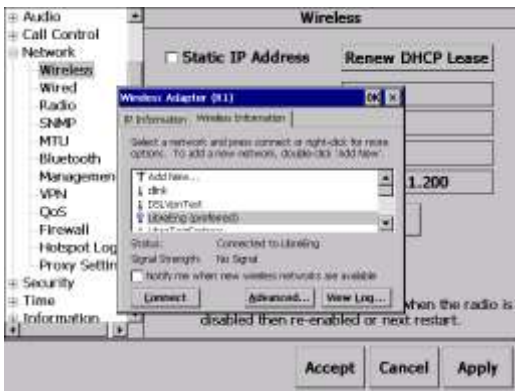
Note 1: The Client Certificate must be imported into the 'My Certificates' store under Configuration\Security\Certificates before it will appear in the 'Select a Certificate' Dialog.



Note 2: Select 'Respond automatically to authentication requests with this information' to disable the 'Network Security Credentials' dialog box when associating to an Access Point. The device will respond automatically with the Username and Password.

Note 3: Select the 'Validate Server' checkbox when the Server's certificate must be authenticated by the Device. This requires the signing Certificate Authority's certificate to be installed on the device.

11. Tap 'OK' on all dialogs to accept all settings and return to the 'Wireless Adapter' dialog.
12. The Status should be reported as 'Connected to...', as shown below.



13. The 'IP Information' tab reports the TCP/IP information for the established connection, as below.



14. Tap the 'Details...' button to view Network Connection details.
15. Tap 'Close' to exit the details.
16. Tap 'OK' to exit the dialog.
17. Enter the Security credentials for the Wireless Network. Press 'Ok'.
18. Confirm you get a 'Connected' status to the Wireless network.
19. Press 'Ok' to exit the 'Wireless Adapter' dialog.
20. If your enterprise is using a Web Proxy, go to Configuration-Network-Proxy Settings.
 - o Enable *Use a proxy server*.
 - o Enter the *Address*.
 - o Enter the *Port*.
 - o If applicable, enable *Bypass proxy server for local addresses*.
 - o If applicable, enable *Proxy Requires Authentication*.
 - o Enter the *User Name* and *Password*.
21. Press 'Accept' to exit the Configuration screen.
22. Press the 'Display' mode button to display the Main menu.
23. Press 'Sign out'

24. At the login screen enter your Onsight Connect Account Username and Password.
25. Press 'Login'.
26. You should now connect to Onsight Connect Service and be able to search your Global Directory and place a call.



*Onsight Devices must have accurate **date** and **time** set to use the Onsight Connect Service. SSL relies on date/time accuracy to perform authentication.*



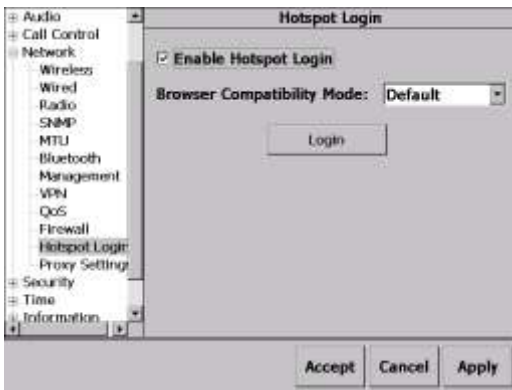
Proxy Settings may need to be configured on the Onsight Device in order to connect to the Onsight Connect Service. See \Configuration\Network\Proxy Settings or configure them using Onsight Management Suite.



*On the User Authentication screen the **Connect to a Wireless Network** link is disabled by default; your Onsight Administrator must enable this feature before it is available.*

1.3 Hotspot Login

When connecting to a Wifi Hotspot or Guest network Access Point you may be required to enter a username and password and/or Accept Terms and Conditions. To enter Hotspot user credentials go to \Network\Hotspot Login.



1. Check 'Enable Hostpot Login'. Press 'Apply'.
2. Press the 'Login' button.
3. You may be presented with a 'Privacy Alert' dialog window. Select 'Allow Cookie' or 'Block Cookie' as desired.
4. You will be presented with the Access or Terms and Conditions login Web page.
5. Enter your credentials and/or Accept the Terms and Conditions.
6. You may then see a site-specific web page or you may be directed to this Librestream sample web page as seen below.



7. At this point you have been granted authorization to access Wifi.
8. Exit the browser by pressing the 'X' at the upper right hand side of the window.
9. Press 'Accept' to exit the Configuration menu and begin using the Onsight Device for collaboration.

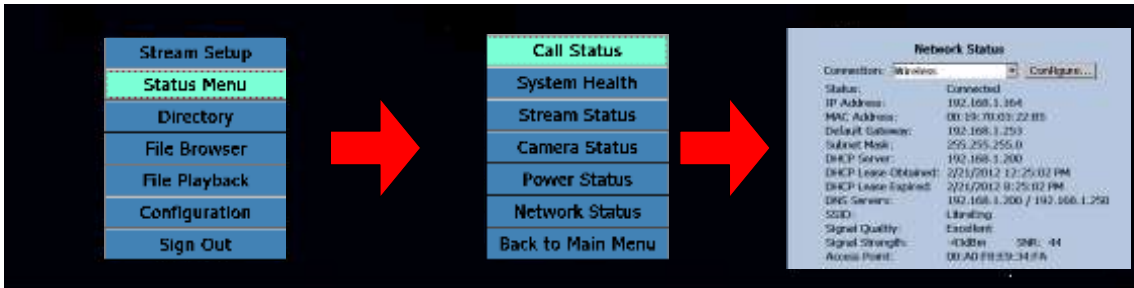
NOTE: If you are unsuccessful in connecting try again and select a different 'Browser Compatibility Mode' from the drop down list before pressing the 'Login' Button.

The Onsight Device browser access is provided to allow Guest Network authorization only, it cannot be used to access alternate web sites.

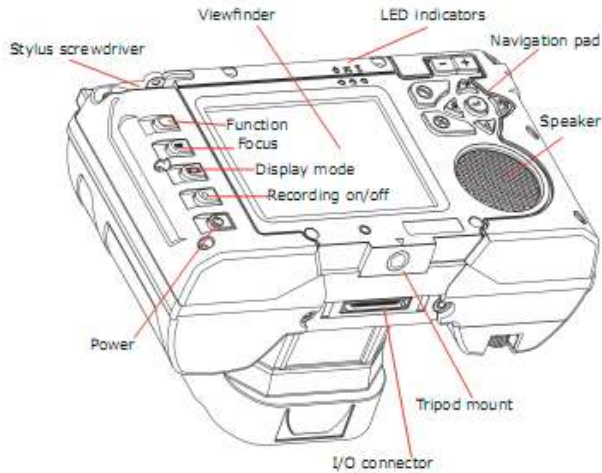
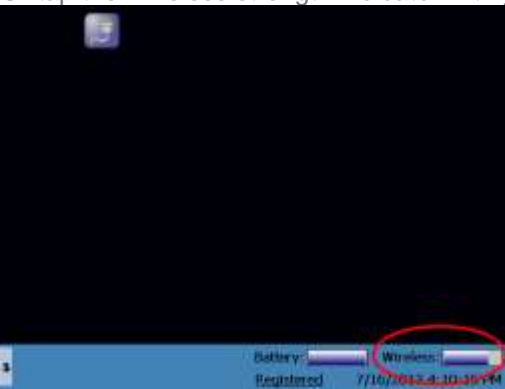
1.4 View Network Status

The Network Status information is available from the Main Menu or by tapping the Wireless strength indicator.

To view, Select 'Status Menu' and then 'Network Status' to see the network details, as below:



Or tap the Wireless strength indicator with your stylus.



	<p>Network LED indicator</p>	<p>Green = Connected to network Off = Not connected to network</p>
--	------------------------------	--

2. For More Information

If you need assistance, please contact Librestream at support@librestream.com.