

on sight 2500

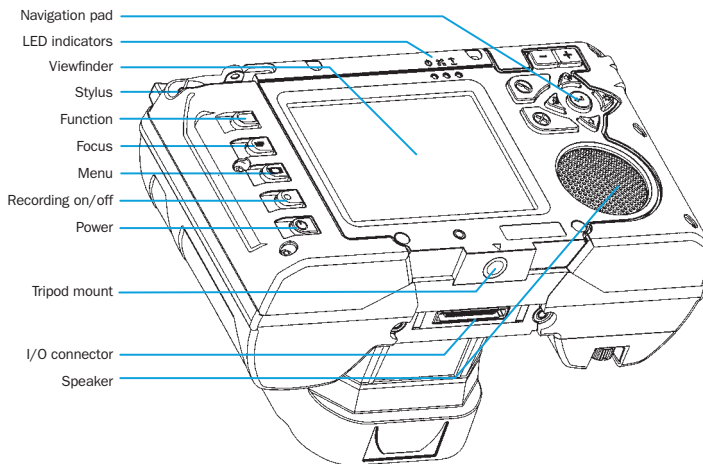
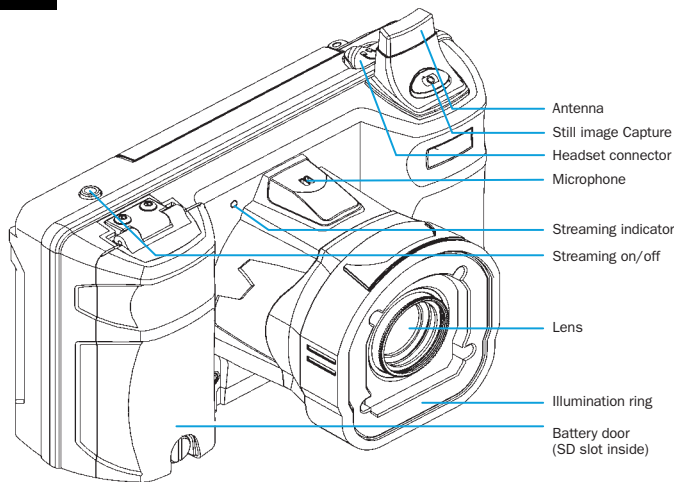
QUICK START GUIDE / REGULATORY AND SAFETY GUIDE



YOUR ONSIGHT 2500 PACKAGE

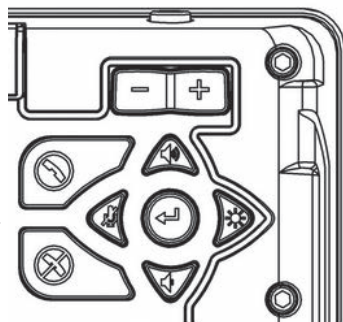
- OnSight 2500
- External Power Adapter
- International Plug Set
- Stylus Screwdriver (2)
- Battery
- I/O Cover
- Power or I/O sled
- Lens Cover
- Screen Protector Film
- Wrist Strap

1 ONSIGHT 2500 MAP



2 BASIC CONTROLS NAVIGATION PAD

BUTTON	FUNCTION
	Start or accept call
	End a call
	Volume up
	Mic mute
	Volume down
	Front illumination light on/off
	Pause/Play/Enter
	Zoom / Manual Focus



LED INDICATORS

LED	NAME	INDICATOR
	Power	● Green = On or Standby
	Network	● Green = Local Network available Off = Local Network unavailable
	Battery	● Orange = Battery is charging Off = Battery not charging

TURN POWER ON

Press and release the button to turn the OnSight device on.

ENTER STANDBY

Press and release the button quickly to go to Standby mode. The Viewfinder will turn off to conserve power but the Power LED remains on.

NOTE: Standby mode is automatic if the device is not used for a specified period (default is 2 minutes).

TURN POWER OFF

Press and hold the button for 2 seconds to turn the OnSight device off.

3 STATUS/MENU SELECTION

SESSION STATUS

Press the menu button once to see the call status, battery life remaining and wireless signal strength.

STREAM STATUS

Press the menu button twice to see zoom, stream quality and video settings.

MAIN MENU

Press the menu button three times to access the main menu.

CONTACTS DIRECTORY

Press the button to display the Contacts window.

START AN ONSIGHT CALL

Display Contacts and use the stylus or navigation pad to select a name from the list. Then press to start the call. You will hear outgoing rings or a busy signal.

ANSWER AN INCOMING CALL

To answer a call, press .

TURN VIDEO STREAM ON OR OFF

When in a call, press the green button on top of the device to start streaming video. Press it again to stop.

END A CALL

To end a call, press the .

RECORD A CALL

To record, press the button. SD card must be installed for local recording.

4 WHAT YOU NEED TO BEGIN

Before you setup your Onsight device, you need the following:

- Network Access Information
- Security Certificates (if required)
- Username
- Password
- Battery (charged and installed)
- SD card (necessary to record locally)

IMPORTANT: When you are touching the Viewfinder screen, always use the stylus. Do not use other objects, as this could damage the Viewfinder screen.



FIGURE 1

SETUP WIZARD

If this is a first time setup you may need to configure Network, Security, Date and Time parameters before logging in. You will be prompted to follow the Setup Wizard (Fig.1).

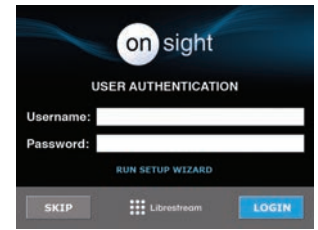


FIGURE 2

LOGIN

To login you will need your Username and Password. (Fig.2)

If you do not want to enter your Username and Password every time you can configure the auto login feature.

5

SLED SELECTION

Install either the Power or I/O Sled using the stylus screwdriver.

POWER SLED

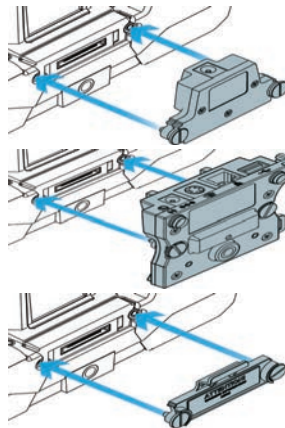
Used to charge the battery.

I/O SLED

For Power, Ethernet, USB, S-video, and Secondary Audio.

I/O COVER

To seal the I/O slot (mandatory for use in hazardous locations – see **Regulatory and Safety Guide**).



INSTALL THE SD CARD

A properly installed SD memory card is necessary to record locally.

- 1 Open the battery compartment door (Fig.1) using the stylus screwdriver. Remove the battery (if installed).
- 2 Open the SD Gate by lifting the metal edge. Do not pull on the Foam spacer.
- 3 Insert the SD card lining up the metal contacts
- 4 Press the SD gate down firmly (Fig.2)

(Continue and follow the Install the Battery instructions)

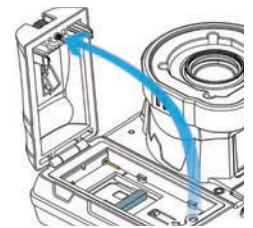


FIGURE 1

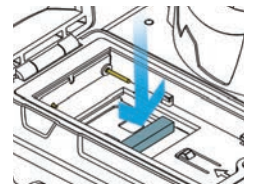


FIGURE 2

6

INSTALL THE BATTERY

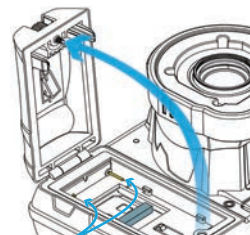
IMPORTANT: Before using this device for the first time you must install and charge the battery. The device will not operate on the external adapter alone.

Open the battery compartment door (Fig. 1) using the stylus screwdriver. Align the gold contact pins (Fig. 3) in the compartment with the contact holes on the battery. (Fig. 4)

Slide the battery towards the compartment door and push forward to create a solid connection. (Fig. 5)

Close the battery compartment and tighten the screw, do not over tighten. (Note that the door will not close if the battery is not fully inserted, and the device will not start if the door is not properly closed.

Attach the Power Sled or I/O Sled and use the external power adapter to charge the battery until the orange battery LED turns off.



CONTACT PINS FIGURE 3

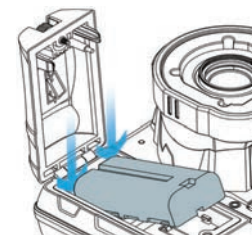


FIGURE 4

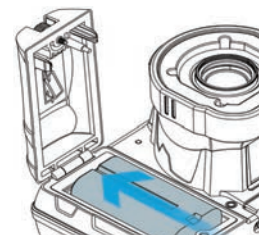


FIGURE 5

LIBRESTREAM ONSIGHT 2500 REGULATORY AND SAFETY GUIDE


SCOPE

This manual applies to the following models. References to MCD2500 in this manual, apply to all the listed models below.

- MCD2500
- MCD2500

GENERAL SAFETY INFORMATION

- Do not attempt to service or dismantle this equipment. All repairs must be done by an authorized Librestream service depot.
- Contact support for an authorized Librestream service depot.
- Do not block or insert objects into any openings in the equipment. Doing so may damage internal components and may cause fire or shock hazards.
- Carefully read the Librestream Quick Start Guide and the User manual before operating the Onsite 2500, paying special attention to "Operating Environment" in section 10.
- Use only a Librestream-supplied power adapter with the equipment. Use of other adapters may cause fire or explosion hazards.
- Operate the external power adapter in a well ventilated area. Do not cover the power adapter with papers or any other items as the adapter may become hot.

 This symbol appears within this manual, as well as the User Manual, Quick Start Guide, and on the product label. The symbol means "Attention, consult ACCOMPANYING DOCUMENTS". This is a critical symbol and the user must refer to the accompanying documents.

1.1. BATTERY

CAUTION! RISK OF EXPLOSION IF BATTERY IS REPLACED BY AN INCORRECT TYPE OR INSTALLED INCORRECTLY.

- Observe the correct polarity when changing the lithium battery. Install battery according to the manufacturer's product documentation.
- Replace battery only with the same type as recommended by the manufacturer
- Dispose of used batteries according to the manufacturer's product documentation and local disposal requirements
- Use only Librestream-supplied batteries with the Onsite 2500. Use of other types may increase the risk of fire or explosion or damage to the equipment.
- Do not store the battery in places where metallic objects may come in contact with the battery terminals (e.g. in a pocket with keys, in a drawer with paper clips, etc.). The resulting short-circuit can cause extremely high temperatures that may damage the battery and cause burns or fires.
- Do not attempt to disassemble the battery. The battery poses a burn hazard if handled improperly. Immediately dispose of a damaged or leaking battery.
- Do not store or leave the Onsite 2500 or Onsite 2500 battery near a heat source (e.g. radiator, stove, heater, automobile dashboard, etc.) as the battery may explode or ignite.

1.2. BATTERY DISPOSAL

The Onsite 2500 uses a Lithium-Ion battery and must be disposed of properly:

- The battery must not be disposed with household or office waste.
- Do not dispose of the battery in a fire as the battery may explode.
- Contact your local waste disposal agency for the address of the nearest battery disposal location.

1.3. SAFETY NOTICE

The Onsite 2500 mobile streaming camera (Model MCD2500) was evaluated to IEC 60950-1:2001, EN60950-1:2001, UL 60950-1:2003 and CSA C22.2 60950-1:2003 standards and found to be in compliance with the standard requirements.



U8 09 09 61052 011

1.4. SAFETY NOTICE (FOR USE IN CANADA ONLY)

The Onsite 2500 mobile streaming camera (Model# Onsite 2500), complies with UL60601-1:1st edition and CAN/CSA C22.2 601.1-M90 ONLY when used in conjunction with the power supply model no. UE24WCP-120150SPA.



U8 09 10 61052 012

1.5. AC ADAPTER INFORMATION

This device is supplied with an AC Adapter for charging the battery and powering the Onsite 2500. The following labels identify the safety approvals for the AC Adapter.



For use only in Canada

1.6. FCC RF EXPOSURE NOTICE

For body worn operation, this product has been tested and meets RF exposure guidelines when used with an accessory that contains no metal. Use of other accessories may not ensure compliance with RF exposure guidelines. No metallic accessories should be used with this device and multiple devices should not be co-located at a distance of less than 20 cm.

Warning: Changes or modifications not expressly approved by the manufacturer could void the user's authority to operate this equipment.

1.7. INDUSTRY CANADA RF NOTICE

Under Industry Canada regulations, this radio transmitter may only operate using an antenna of a type and maximum (or lesser) gain approved for the transmitter by Industry Canada. To reduce potential radio interference to other users, the antenna type and its gain should be so chosen that the equivalent isotropically radiated power (e.i.r.p.) is not more than that necessary for successful communication.

Conformément à la réglementation d'Industrie Canada, le présent émetteur radio peut fonctionner avec une antenne d'un type et d'un gain maximal (ou inférieur) approuvé pour l'émetteur par Industrie Canada. Dans le but de réduire les risques de brouillage radioélectrique à l'intention des autres utilisateurs, il faut choisir le type d'antenne et son

gain de sorte que la puissance isotrope rayonnée équivalente (p.i.r.e.) ne dépasse pas l'intensité nécessaire à l'établissement d'une communication satisfaisante.

This device complies with Industry Canada licence-exempt RSS standard(s). Operation is subject to the following two conditions: (1) this device may not cause interference, and (2) this device must accept any interference, including interference that may cause undesired operation of the device.

Le présent appareil est conforme aux CNR d'Industrie Canada applicables aux appareils radio exempts de licence. L'exploitation est autorisée aux deux conditions suivantes : (1) l'appareil ne doit pas produire de brouillage, et (2) l'utilisateur de

l'appareil doit accepter tout brouillage radioélectrique subi, même si le brouillage est susceptible d'en compromettre le fonctionnement.

LICENCE EXEMPT RADIO APPARATUS / APPAREILS RADIO EXEMPTS DE LICENCE

The device for operation in the band 5150-5250 MHz is only for indoor use ONLY, this restriction is to reduce the potential for harmful interference to co-channel mobile satellite systems.

Les dispositifs fonctionnant dans la bande 5150-5250 MHz sont réservés uniquement pour une utilisation à l'intérieur afin de réduire les risques de brouillage préjudiciable aux systèmes de satellites mobiles utilisant les mêmes canaux.

High-power radars are allocated as primary users (i.e. priority users) of the bands 5250-5350 MHz and 5650-5850 MHz and these radars could cause interference and/or damage to LE-LAN devices.

Les utilisateurs de radars de haute puissance sont désignés utilisateurs principaux (c.-à-d., qu'ils ont la priorité) pour les bandes 5250-5350 MHz et 5650-5850 MHz et ces radars pourraient causer du brouillage et/ou des dommages aux dispositifs LAN-EL.

The maximum antenna gain permitted for devices in the bands 5250-5350 MHz and 5470-5725 MHz shall comply with the e.i.r.p. limit.

Le gain maximal d'antenne permis pour les dispositifs utilisant les bandes 5250-5350 MHz et 5470-5725 MHz conforme à la limite de p.i.r.e.

The maximum antenna gain permitted for devices in the band 5725-5825 MHz complies with the e.i.r.p. limits specified for point-to-point and non point-to-point operation as appropriate.

Le gain maximal d'antenne permis (pour les dispositifs utilisant la bande 5725-5825 MHz) conforme à la limite de p.i.r.e. spécifiée pour l'exploitation point à point et non point à point, selon le cas.

CE DECLARATION OF CONFORMITY

CE Declaration of Conformity (DOC) is shown on following page. The signed copy of the Declaration of conformity is available; please contact Librestream customer support if you require a signed copy.



CE DECLARATION OF CONFORMITY

According to ISO/IEC 17050-1:2004

Manufacturer's Name:
Librestream Technologies Inc.

Manufacturer's Address:
895 Waverley St. Suite 110
Winnipeg, MB. R3T 5P4
Canada. T: 204-487-0612, F: 204-487-0914

Declares under sole responsibility, that the product(s) as originally delivered:

Product Name:
Onsite Mobile Device

Model Number(s):
MCD2500-XXX

complies with the essential requirements of the following applicable European Directives and carries the CE marking accordingly:

Low Voltage Directive (2006/95/EC)
EMC Directive (2004/108/EC)
R&TTE Directive (1999/5/EC)
ATEX Directive (94/9/EC)
*this directive applies to Onsite 2500Ex only

and conforms to the following harmonized standard(s):

EMC & RADIO: EN 55011:2007 CLASS B
EN61000-6-2:2005, EN61000-3-2:2006,
EN61000-3-3:2008
ETSI EN 300 328 V1.8.1:2012
ETSI EN 301 893 V1.7.1:2012
ETSI EN 301 489-1 V1.8.1:2008
ETSI EN 301 489-17 V1.2.1:2009
EN 50360 :2001, EN 50371:2002, EN 50392:2004

SAFETY:
EN 60950-1+A1:2010, IEC 60950-1+A1:2009

ATEX:
EN 60079-0:2006, EN 60079-11: 2012
EN 60079-15:2010 (Onsite 2500Ex only)

**Supplementary Information /
Information Supplémentaire:**

France :

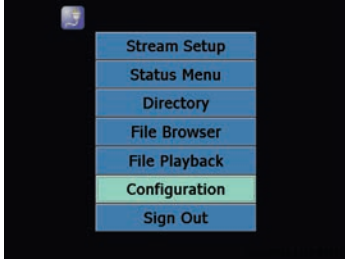
L'utilisation de cet équipement (avec 2.4GHz Wireless LAN) est soumise à certaines restrictions: Cet équipement peut être utilisé à l'intérieur d'un bâtiment en utilisant toutes les fréquences entre 2400 à 2483.5MHz (Chaîne 1-13). Pour l'utilisation en environnement extérieur, toutes fréquences entre 2454-2483.5MHz doivent être désactivés. Voir les instructions inclus pour configuration extérieure de cet équipement. Pour les dernières restrictions, voir <http://www.art-telecom.fr>

For 2.4 GHz Wireless LAN operation of this product, certain restrictions apply: This equipment may be used indoor for the entire 2400-2483.5 MHz frequency band (channels 1-13). For outdoor use, the frequency band from 2454-2483.5 MHz must be disabled. Please see included instructions on how to configure the product for outdoor use in France. For the latest restrictions, see <http://www.art-telecom.fr>

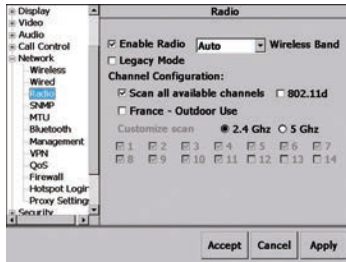
Place of Issue: Winnipeg MB, Canada
Date of Issue: May 23rd, 2013

FRANCE - OUTDOOR CONFIGURATION

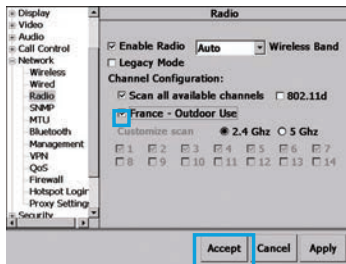
- Starting from the default Viewfinder display, press the Display button three times to display the Main Menu.



- From the Main menu, tap the Configuration menu option to display a Configuration window.



- From the Configuration window, select the Radio Tab.
- Select the Checkbox "France – Outdoor Use", and click Accept. If Accept is not clicked the settings will not take affect.



IMMUNITY FOR INDUSTRIAL ENVIRONMENTS

This product has been tested and found to comply with EN 61000-6-2: Immunity for Industrial Environments. When in the presence of high levels of radio-frequency electromagnetic fields, the user may notice interference within the video content present on the equipment. If this occurs, the user should re-orient the equipment or increase the separation between the equipment and the interfering source. If an external audio headset is being used and is the receiving source of audio interference, the user may experience improved performance by using a headset which has been tested and found to comply with EN61000-6-2: Immunity for Industrial Environments.

Radiated Emissions

1.8. FCC CLASS B NOTICE

This product has been tested and found to comply with the limits for a Class B digital device, pursuant to Part 15 of the FCC Rules. These rules are designed to provide reasonable protection against harmful interference in a residential installation. This product generates, uses, and can radiate radio frequency energy, and if not installed and used in accordance with the instructions, may cause harmful interference with radio communications. However, there is no guarantee that interference will not occur in a particular installation. If the equipment does cause harmful interference to radio or television reception, which can be determined by turning the equipment on and off, the user is encouraged to try to correct the interference by one or more of the following measures:

- Reorient or relocate the receiving antenna.
- Increase the separation between the equipment and receiver.
- Connect the equipment to an outlet on a circuit different from that to which the receiver is connected.
- Consult the dealer or an experienced radio/TV technician for help.

Caution: Changes or modifications that are not expressly approved by the manufacturer could void the user's authority to operate this equipment.

1.9. INDUSTRY CANADA CLASS B NOTICE

This Class B digital apparatus complies with Canadian ICES-003. Cet appareil numérique de classe B est conforme à la norme NMB-003 du Canada.

HAZARDOUS LOCATION OPERATION MCD2500 (ONSIGHT 2500EX)

All user documentation and the instructions within this section must be read and understood before:

- Charging the battery;
- Operating on AC power;
- Insertion or removal of the:
 - Battery
 - SD card
 - Headset
 - I/O Cover
 - Power Sled
 - I/O Sled
- Operation with any accessory or peripheral.

The user must review the following information and warnings before using the MCD2500 within a hazardous environment:

HAZARDOUS LOCATION RATINGS:

- Please refer to the product label to determine the product's part number and hazardous location rating.
- MCD2500 devices with part number 200416-01 or 200155-01 have the following hazardous location ratings:
 - Class I Division 2, Groups A, B, C, D T5
 - Class I, Zone 2 AEx nA IIC T5
 - Class I, Zone 2 Ex nL IIC T5
 - Ta = -10°C to +40°C
- MCD2500 devices with part number 200416-02, or 200155-02 have the following hazardous location ratings:

IECEX FME 08.0008X
Ex iC nA IIC T5 Gc
Ta = -10°C to +40°C

FM08ATEX0077X
II 3 G Ex iC nA IIC T5
Ta = -10°C to +40°C

- If you are uncertain about the product's rating please contact the customer support department for more information.

HAZARDOUS LOCATION GENERAL INFORMATION:

The MCD2500 is constructed with a Lexan polycarbonate housing and is overmolded with a thermoplastic polyurethane elastomer.

Evaluation for material compatibility of the MCD2500 to actual end-user service conditions is strongly recommended.

WARNINGS

- Carefully read all the provided manuals and documentation.
- Observe the rated operating and storage environment specifications.
- The I/O cover must be installed on the MCD2500 prior to entering the potentially hazardous environment and it must remain installed at all times while in the potentially hazardous environment. Ensure that the I/O connector is clean and free of debris prior to installing the I/O cover. Every

time before entering the hazardous environment, ensure that the I/O cover is fastened securely to the MCD2500 by hand-tightening the I/O cover's retention screws.

- The MCD2500 cannot be used with the AC power adapter or I/O sled within the hazardous environment.
- WARNING - DO NOT OPEN BATTERY DOOR WHEN ENERGIZED. The battery door must be securely closed within the hazardous environment.
- WARNING – DO NOT REMOVE OR INSTALL BATTERY IN THE HAZARDOUS ENVIRONMENT.
- WARNING - DO NOT CHARGE IN HAZARDOUS AREA. Battery charging is not permitted within the hazardous environment.
- AC power supply operation is not permitted within the hazardous environment.
- WARNING - DO NOT REMOVE OR INSTALL SD CARD IN HAZARDOUS AREA. The SD Memory Card Insertion and/or Removal are not permitted within the hazardous environment.
- Inspect the camera before each use. The MCD2500 can not be used within a hazardous environment if any damage is visible or if the device appears to not operate correctly.
- At no time is the user allowed to use a device that has been disassembled or assembled by anyone other than an authorized service representative.
- Do not attempt to service or dismantle this equipment. Service and maintenance must be performed by an authorized service center.
- Librestream is the only approved authorized service center of MCD2500 devices for hazardous locations. For service please contact:

Librestream
895 Waverley St., Suite 110
Winnipeg, MB Canada
R3T 5P4
Phone: 1-800-849-5507
Email: support@librestream.com

ACCESSORIES IN HAZARDOUS LOCATION:

- The MCD2500 has been approved to work within the hazardous environment with an approved headset, SD flash memory card and the built in battery. All other accessories or peripherals are not allowed in hazardous locations.
- The MCD2500 device shall only be used with the approved Librestream battery P/N 100229, Lilon, 7.2V nominal, 2400mAh capacity, discharge duration 2.4hrs@1A. WARNING – DO NOT REMOVE, INSTALL OR CHARGE BATTERY IN THE HAZARDOUS ENVIRONMENT.
- The MCD2500 device shall only be used with an approved headset in hazardous locations. Please contact customer support for information on an approved headset for hazardous locations.
- The MCD2500 device shall only be used with an approved SD flash memory card in hazardous locations. Please contact support for information on an approved SD Memory Card. WARNING - DO NOT REMOVE OR INSTALL SD CARD IN HAZARDOUS AREA.

ASSOCIATED HAZARDOUS LOCATION STANDARDS:

Canada:	C22.2 No. 212	1987
	C22.2 No. 1010.1	1992
	C22.2 No. 60529	2005
	C22.2 No 60079-15	2002
USA:	CLASS 3600	1998
	CLASS 3611	2004
	CLASS 3810	2005
	NEMA 60529	2004
ATEX:	ISA 60079-15	2003
	EN 60079-0	2009
IECEX	EN 60079-11	2012
	EN 60079-15	2010
	IEC 60079-0	Ed 5.0
	IEC 60079-11	Ed 6.0
	IEC 60079-15	Ed 4.0

JAPAN

This unit must be connected to the public internet via a router/switch that has JATE approval.

This device is restricted to indoor use only when the wireless radio is operated in the frequency range 5150-5350 MHz.

TAIWAN

經型式認證合格之低功率射頻電機，非經許可，公司、商號或使用者均不得擅自變更頻率、加大功率或變更原設計之特性及功能。低功率射頻電機之使用不得影響飛航安全及干擾合法通信；經發現有干擾現象時，應立即停用，並改善至無干擾時方得繼續使用。前項合法通信，指依電信法規定作業之無線電通信。低功率射頻電機須忍受合法通信或工業、科學及醫療用電波輻射性電機設備之干擾。

WEE INFORMATION

Information on collection and recycling arrangements for Librestream customers can be found at www.librestream.com/recycling

Librestream Onsight 2500 Regulatory and Safety Guide

Doc #: 400258-00 Rev A
September 2015

Information in this document is subject to change without notice. Reproduction in any manner whatsoever without the written permission of Librestream is strictly forbidden.

Copyright © 2006 – 2015
Librestream Technologies Incorporated.
All rights reserved.

Name of Librestream Products:

Onsight 1000
Onsight 2000
Onsight 2500

Copyright Notice:

Copyright 2004 – 2015 Librestream Technologies Incorporated. All Rights Reserved.

Patents Notice:

United States Patent # 7,221,386, together with additional patents pending in Canada, the United States and other countries, all of which are in the name of Librestream Technologies Inc.

Trademark Notice:

Librestream, the Librestream logo, Onsight, Onsight Expert, Onsight Connect, Onsight Mobile, Onsight Enterprise, Onsight Account Manager, and Onsight Management Suite are either registered trademarks or trademarks of Librestream Technologies Incorporated in Canada, the United States and/or other countries. All other trademarks are the property of their respective owners.

LIBRESTREAM CONTACT INFORMATION

Website	www.librestream.com
Head Office	Librestream Technologies Inc. Suite 110, 895 Waverley St. Winnipeg, Manitoba Canada, R3T 5P4

General Inquiries:

Email	information@librestream.com
Phone	(204) 487-0612
Fax	(204) 487-0914
Support:	
Email	support@librestream.com
Phone (NA)	1 800 849 5507
Phone (Int'l)	+ 1 204 487 0612



WEBSITE: www.librestream.com

HEAD OFFICE: Librestream Technologies Inc.
Suite 110, 895 Waverley St.
Winnipeg, Manitoba
Canada, R3T 5P4

GENERAL INQUIRIES:

Email information@librestream.com

Phone 1 (204) 487 0612

Fax 1 (204) 487 0914

SUPPORT:

Email support@librestream.com

Phone (NA) 1 (800) 849 5507

Phone (Int'l) + 1 (204) 487 0612

Information in this document is subject to change without notice. Reproduction in any manner whatsoever without the written permission of Librestream is strictly forbidden.

Copyright © 2006 – 2016. Librestream Technologies Incorporated. All rights reserved.

For detailed information on operating the Onsite device or Onsite Connect software, refer to the manuals at www.librestream.com/support/knowledge.html